

The Raymond Road Runner

A Raymond School District & Town of Raymond Publication
<http://www.raymondmaine.org>

ECRWSS

Volume VII, Issue VII

POSTAL CUSTOMER

NOVEMBER 2004

It's Time To Plan For Raymond's Future

By: Robert Faunce, Town Planner
Maps by: Elisa Trepanier, GIS Coordinator

You, the residents of Raymond, deserve a collective pat on the back for overwhelmingly approving the new comprehensive plan at the October 14 Special Town Meeting. The plan offers a guide to elected and appointed officials and the public for updating ordinances and procedures, modernizing local government and planning for the future.

In my view, it's a good, solid plan that challenges the many critical issues facing

Raymond. As town planner, I believe that one of the most important of these issues is the impact of explosive residential growth on Raymond's traditional rural character.

As illustrated in Figure 1, between 1990 and 2000, Raymond's population grew 30%, which is higher than any other town in the region (Raymond, Bridgton, Casco, Harrison, Naples, Windham, Gray, New Gloucester and Poland) and much higher than Cumberland County or the state as a whole. The number of year round housing units in Raymond grew 37% during this same period, which was more than

what is often called "sprawl."

A community like Raymond will not change from rural to suburban overnight, but the distinction between the rural and suburban areas of the community is becoming less clear with every passing year. Because this change is not crashing upon us but instead moving steadily and forcefully, it is sometimes hard to comprehend the degree of change that has taken place.

To get a better sense of this change, it is helpful to understand where Raymond was just a short time ago. Until relatively recently Raymond was a small rural agricultural community. In 1900 there were

virtually no seasonal homes, and it wasn't until the 1930's and 1940's that the seasonal home and summer camp sectors began to grow. By the 1970's the growth in recreational use of Raymond's lakes was matched by development of year-round residences. Now Raymond appears to be one of the most desirable residential markets in the region, as evidenced by its skyrocketing population and housing

The first three figures are based on data from actual USGS maps, while the fourth (2001) uses tax records to add those residences constructed between 1975 and 2001.

The 1892-1894 map shows a typical rural agricultural land use pattern. Buildings are spread out and are mostly farms that are separated from each other by agricultural fields. You will note that there is almost no shoreline development, even on Sebago Lake.

The 1941 map shows the beginnings of lakeside development, but the numbers and locations of buildings along town roads really had not changed much in the intervening 50 years. Physically, Raymond probably looked very much the same as it did in 1892.

By 1975, two growth trends had emerged. The popularity of the town's six great ponds had grown to the point where as much as half their combined shoreline was developed, and most of the current road network serving seasonal homes was in place. Perhaps more significantly, there was a substantial increase in homes along town roads that did not reflect the traditional rural agricultural template.

The 2001 map shows a significant strengthening of these trends. The map indicates that between 1975 and 2001, 953 residences were added to the community, a 60% increase in just 26 years. In fact, these maps may present an even more telling statistic. While it took 171 years to reach the 673 building threshold shown on the 1942 map, it required only an additional six decades to nearly quadruple the building stock. Although seasonal residences represent a significant portion of this growth, we need to bear in mind that many of these summer cottages have been, and will continue to be, converted to year-round use.

Continued on page 12

Road Runner Articles Due

Articles for the next edition of the Road Runner newsletter are due by the last Thursday of November. Please provide them by any of the following methods:

E-Mail; Diskette; Paper; CDROM
Articles should be submitted in RTF and pictures in JPEG format. E-mail articles and pictures to:

kevin.woodbrey@raymondmaine.org
or drop them off at the Town Office or at one of the school offices.

In This Issue

News From The Raymond Village Library	2
Library Annual Meeting	3
Library Survey	3
Municipal News Brief	5
Raymond Passes Comp Plan, Delays TV Studio	5
Comprehensive Plan Implementation Committee	5
Raymond Fire/Rescue	6
Geographic Information Systems (GIS) Program	6
Recent Activities Of RWPA	7
Home Heating Assistance	8
Reduce Your Property Taxes!!!	8
Raymond Recreation Basketball	8
JSMS Yearbook Costume Party A Big Success	8
Aquatics Programs At St. Joseph's College	8
Raymond Recreation Friday Night Skiing	8
Raymond REC Citrus Fundraiser	9
Windham Center Stage Theater	9
Raymond Lions Help Fund Guide Dog	9
"Letterboxers Discover The Lakes Region!"	9
RES Update	10
Fabulous Farm Fun At Kindergarten Fall Fest	10
Mentoring Takes To The Tenny	10
Kids 2 Kids: Leaders In Training	10
Maine Conservation School Field Trip	11
PTA Corner	11
Scouts To Collect Food And Flags	12

Road Runner Staff:

Kevin Woodbrey Laurie Forbes
Norma Richard Elisa Trepanier

Visit Us on the Web

Make sure to see the on-line archives at the Raymond, Maine, website:

<http://www.raymondmaine.org>

Look under Calendars & News

To learn more about what's new in the Town of Raymond, visit our website at

<http://www.raymondmaine.org>

Online services now include:

- Automobile registration
- Hunting and fishing licenses
- Assessment information
- Property & other maps

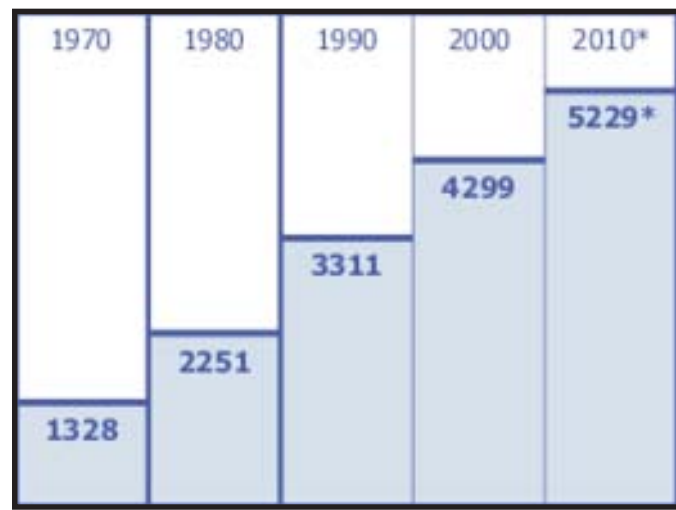


Figure 1: Raymond Population Growth (* State Planning Office Projection)

all towns in the region save New Gloucester and again, much greater than the county or the state.

Does it seem to you that Raymond has grown so quickly in so short a period of time? Probably not because these new homes are not concentrated in a few areas but have diffused throughout the community. But you probably have noticed that there are more driveways, more traffic, more lights and perhaps less wildlife where you live than just a few years ago. This is

growth rates.

Perhaps the best way to understand what has, and is, happening in Raymond is to see it visually. We are very fortunate in that we have a trove of United States Geological Survey (USGS) maps going back as far as 1892 that document the locations of principal structures, such as homes, in the community.

Figures 2-5 show the number and locations of seasonal and year-round dwellings in Raymond between 1892 and 2001.

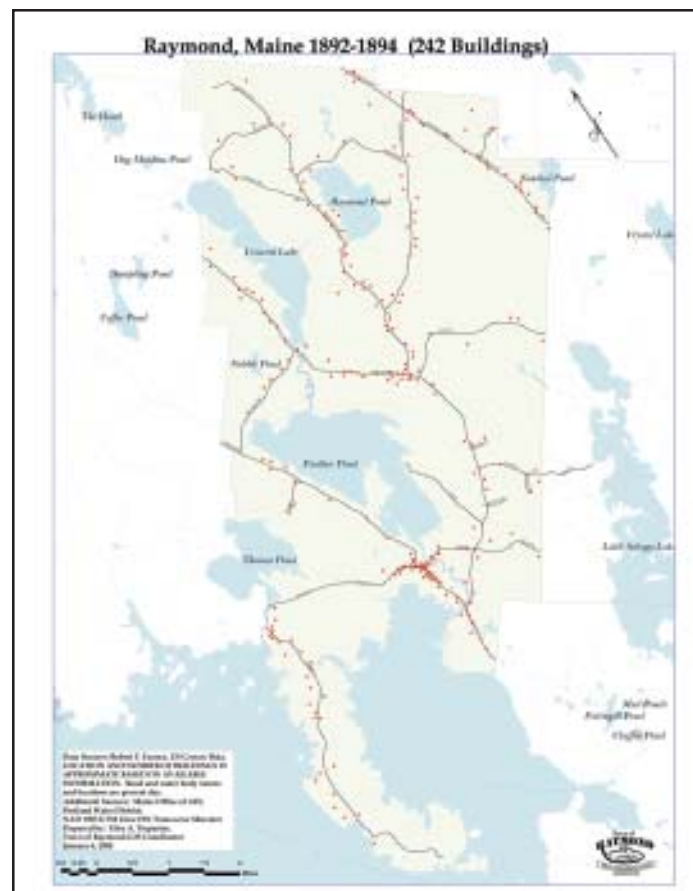


Figure 2

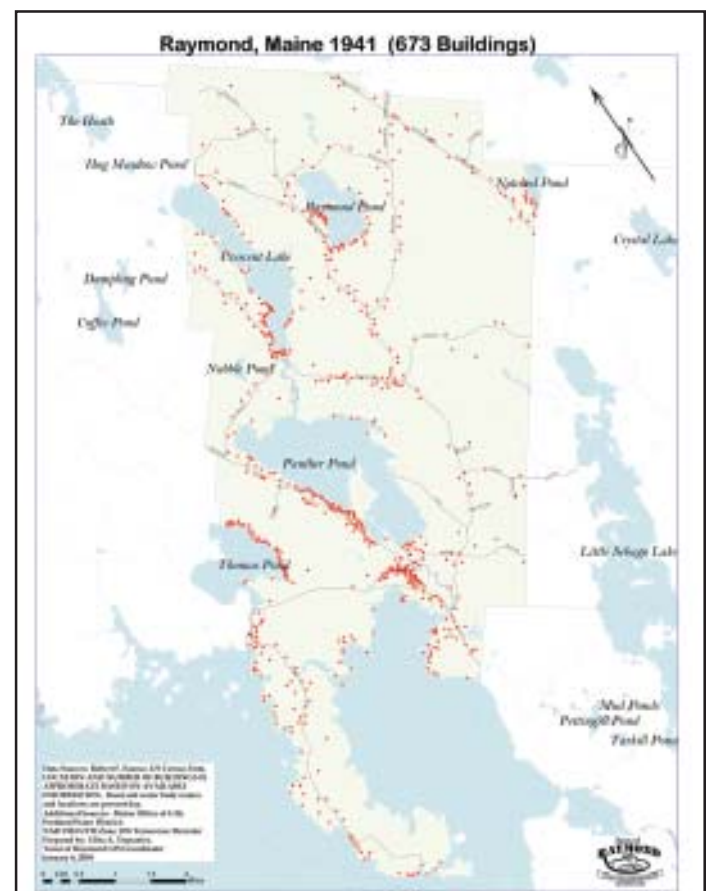


Figure 3

News From The Raymond Village Library

Upcoming Events

On Wednesday, November 3, from 7 to 8:30pm the adult games series continues: "Meet Across the Board," with Scrabble and checkers featured. We welcome all players – we have plenty of games to share.

Wednesday, November 10, will be an opportunity to learn how to use spreadsheets, or perhaps to brush up on your skills. Doris Horne will explain and demonstrate how to work with spreadsheets using Microsoft Excel. It will be at the library from 7pm to 8:30pm. All interested persons are invited to attend.

To help celebrate Children's Book Week the week of November 17, there will be a Pajama Storytime at the library for pre-school and elementary school youngsters on November 17 at 6:30pm. Jodie Fein, an acclaimed storyteller, will be the guest story teller. Everyone wears PJs - Moms and Dads, too.

On Sunday, November 21, from 3pm to 4:30pm, we are in for a special treat. A program entitled "Native American Traditions and Music" will be presented by Lynn Osterberg and Frank Barber. Both are of Native American descent. In a celebration of Thanksgiving, Lynn and Frank will explain how Native Americans were able to sustain themselves through autumn and winter months on what they were able to hunt or harvest.

They will share Ojibway and Cherokee lore and sing their native songs. Please join us for this unique way of celebrating Thanksgiving.

The Raymond Lions Club sponsors the Annual Tree Lighting Ceremony, which will be held at the library on November 28 at 5 pm. This is a community event, and there will be fun and refreshments; so let's open the holiday season together.

The Holiday Bake Sale will be held at the library on December 12 beginning at 11am and continuing through the afternoon. There will be special treats for everyone.

This is a wonderful way to supplement your holiday baking; makes great gifts, too.

Special Honor

The Raymond Village Library named Lisa Friedlander as the Outstanding Service Award recipient on September 30, 2004. At the library's annual meeting, Sue Ellen Gendron presented Lisa with a book dedicated in her honor for the MANY ways she has contributed to the library and its programs.



Lisa Friedlander (left) receiving the Outstanding Service Award - Raymond Village Library - presented by Sue Ellen Gendron.

Some of the contributions listed were: five years as the coordinator and initiator of RVL's Summer Reading Program; coordinating and planning the Murder Mystery Dinner fundraisers; coordinating and planning the Junior Murder Mystery Night; creator and coordinator of the

bridge program; Library Survivor Night for fourth and fifth graders; as well as volunteering at the circulation desk. Many of these contributions required much time, energy, creativity and supplies, which Lisa also donated.

Murder Mystery Dinner

The Murder Mystery Dinner on October 16 proved that fundraising can be Fun. The 40 participants in colorful costumes of the late 1800's were all suspects until the real culprits were discovered. Lots of wonderful food, laughter and fun were had by all. We would like to thank the following businesses for their contributions: Little Wohelo Lodge, The Good Life Market, Sunset Variety, Fisherman's Net, D'n J Pizza, Danielle's Diner, Raymond Village Florist, K&K Video, Cabin Candlery, Cricket's Corner, Aubuchon Hardware, Shaw's, Hannaford and Wal-Mart. The kitchen crew : Barb Thorpe, Ben Severn, Sandi Severn, Tom Cloutier and Bill Dreyer. The maids: Molly Cloutier, Gaia Cloutier, Molly Keane Dreyer and Haley Acker. Because of the generous help and wonderful participation, \$1,100, was raised for book purchases for the library.

Art Exhibit

The artwork displayed at the library throughout November was painted by 16-year old artist Kayla Harding, a junior at St. Dominic's Regional High School. Although Kayla has always been interested in art, she just began formal art classes last year, and has been selling her art at Cottage Industries of Raymond and at Thompson Lake Marina of Casco.

Kayla also enjoys softball, dance, teaching Sunday School and is a member of the Key Club. She is the Vice President of the Art Club at St. Dom's and takes part in the Art and Literacy Magazine. Kayla attended Jordan-Small School and lives in Raymond. Her art exhibit includes different media: ink sketches, acrylics and pastels, and covers a variety of subjects. Be sure to enjoy Kayla's artwork when you next come to the library.

November/December 2004

Events and Meeting Schedule

SUNDAY	MONDAY	TUESDAY	WEDNESDAY	THURSDAY	FRIDAY	SATURDAY
FB =Fire Barn JS =Jordan-Small KC =Kokatosi Campgnd PS =Public Safety Bldg. RE =Raymond Elementary	SG =Sheri Gagnon TG =Town Garage RT85 TH =Town Hall VL =Village Library VC =Village Church VT =Village Tennis MB =ModularBuilding at JSMS	2 7:00AM-8:00PM NATIONAL/STATE ELECTIONS 6:30PM VC Troop 800 Meeting	3 10:00AM VL Toddlertime 10:45AM VL Preschool Storytime 7:00-8:30PM VL Adult Game Night - Poker and Chips	4 6:30PM KC Lions Club Meeting 6:30-8:30PM JS BSA Merit Badge College	5	6 2:00-4:00PM KC Scouting for Food Retired Flag Pickup
7	8 10:00AM VL Babytime	9 6:30PM VC Troop 800 Meeting 6:30PM RE PTA Meeting 7:00PM TH One Raymond Steering Committee	10 10:00AM VL Toddlertime 10:45AM VL Preschool Storytime 7:00PM TH Planning Board 7:00-8:30PM VL Learn Excel Spreadsheets	11 VETERANS DAY TOWN OFFICE CLOSED BSA Flag Retiring Ceremony	12 Denim Day at RES 2:15PM Poland JSMS Golf	13
14	15 10:00AM VL Babytime	16 6:30PM VC Troop 800 Meeting 7:00PM TH Selectmen Meeting	17 8:00AM-8:00PM RE Book Fair 10:00AM VL Toddlertime 10:45AM VL Preschool Storytime 6:30PM VL Pajama Storytime	18 8:00AM-8:00PM RE Book Fair 5:00PM Point Sebago at Camp Sunshine Chamber of Commerce After Hours 6:00-8:00PM RE Drama Performance 6:30PM KC Lions Club Meeting 6:30-8:30PM JS BSA Merit Badge College 7:00PM TH Cemetery Committee	19 8:00AM-8:00PM RE Book Fair 9:00AM RE Good News 8:00AM-8:00PM VL Library Board Meeting 6:00-8:00PM RE PTA Holiday Fair Camp Nutter Troop 800 Campout	20 Camp Nutter Troop 800 Campout
21 Camp Nutter Troop 800 Campout 3:00-4:30PM VL Native American Traditions & Music 3:00PM VL Reading Group	22 10:00AM VL Babytime	23 6:30PM VC Troop 800 Meeting	24 10:00AM VL Toddlertime 10:45AM VL Preschool Storytime 7:00PM MB Conservation Commission	25 Road Runner Deadline THANKSGIVING DAY TOWN OFFICE CLOSED	26 TOWN OFFICE CLOSED	27
28 5:00PM VL Tree Lighting Ceremony	29 10:00AM VL Babytime 6:00-8:30PM RE Pack 800 Meeting 7:00PM TH Zoning Board of Appeals	30 6:30PM VC Troop 800 Meeting 7:00PM MB Conservation Commission	1 10:00AM VL Toddlertime 10:45AM VL Preschool Storytime	2 6:30PM KC Lions Club Meeting	3 Camp Hinds Troop 800 Campout	4 Camp Hinds Troop 800 Campout

Library Annual Meeting Welcomes New Trustees And Highlights Volunteers' Dedicated Service

On September 30th, the Raymond Village Library held its first annual meeting as a non-profit corporation. Lisa Schadler and Deb Hutchinson were elected to the Board of Trustees. Lisa and Deb joined Louise Murray, Laurie Forbes, Sandi Severn, Diane Cole and Lori Rand on the board. President Louise Murray thanked Charlie Hewson and Karyn Knights, outgoing trustees, for their service to the library.

Library Director Barbara Thorpe, in her Annual Report to the Board of Trustees, called the dedicated volunteers the mainstay of the library. She thanked the volunteers for the major contribution they make to the library – at the circulation desk, behind the scenes processing items into the collection, and on committees. The newly formed or recently reinvigorated committees are continuing to expand, representing the town's needs with a broader population of library patrons and advocates.

Volunteers serve on the following library committees: Program, Technology, Planning, Publicity, and Building & Grounds. Director Thorpe cited the Program Committee for the enrichment and cultural depth they add to the community. Complimenting the Technology Committee for their responsiveness to any problem at any time, she noted that the internet and word processing capabilities at the library are much in demand by patrons. The Planning Committee work, she stated, will help assure responsiveness to the needs of its current patrons and expand the number of users through its outreach to individuals and organizations in the town. She thanked the Building and Grounds for their work to enhance the "curb appeal" of the library and for their promptness in addressing upkeep and maintenance needs. She related that other librarians in the area are impressed with the level of media coverage received by Raymond Village

Library in local publications, and she attributed that to the personal contacts made with the media outlets by the Publicity Committee. In addition to the above committees, a Fundraising Committee is being established to explore new revenue sources.

One volunteer who contributes in a myriad of ways to the library was given a special tribute at the meeting. Please see the article on Page 2 about how one volunteer, Lisa Friedlander, has had such a positive impact on the library's role in the community.

Please visit the Raymond Village Library link on the Town's website to view the full minutes of the meeting, including briefs of the individual committee reports and the year-in-review summaries presented. Comments, questions, compliments, or concerns regarding the library may be addressed to any member of the Board of Trustees or to Director Thorpe.

Raymond Village Library Survey

What Does the Future Hold for the Raymond Village Library?

You can make a great contribution to the library's future with just a few minutes of your time – the Planning Committee has developed a survey to get your input on how the library can most effectively and creatively serve this community. Your feedback will help us

- determine what the library is doing well and what could be improved
- understand the needs of a growing community
- plan ahead for services that are aligned with adequate resources

Thank you for your feedback!

In order to serve the needs of our community, we are seeking input from you on a variety of issues. Your responses will help us greatly in our planning for the future.

You may also fill this survey out online at www.raymondmaine.org/library

Please complete the survey by November 30, 2004

Thank you in advance for your cooperation & time in filling out this survey!

1. How often do you use the Raymond Village Library?

- Once a week
- Once every two weeks
- Once a month
- Once very six months
- Once a year
- Never

2. What are your reasons for using the library? all that apply

- Bestsellers
- Fiction books
- Nonfiction books
- Gather information/research
- Children's materials
- Young adult materials
- Videos/DVDs
- Copy machine
- Magazines
- Internet
- Music CDs
- Jigsaw puzzles
- Other (please specify)
- School homework
- Children's programs
- Adult programs
- "How To" subjects
- Adult books on tape
- Income tax forms
- Reference materials
- Word processing
- Meet friends/business associates
- Quiet place to work
- Marvel - Statewide Database
- Community Information

Comments:

3. What are your reasons for not using the Library? all that apply

- Don't know the location of library
- Library is too far from my home
- Don't have transportation
- Don't have a library card
- Inconvenient hours
- Other (please specify)
- Use the library at my school/college
- Use a neighboring library
- Buy my own books/magazines
- Unaware of library services

Comments:

4. The Library hours, which complement neighboring library hours, are... Sunday, Monday and Wednesday from 10am to 7pm

Does this meet your needs? • Yes • No
What other days or hours would serve you better?

5. Please describe the quality of service you received at the library.

- Staff was attentive • Yes • No
 - Staff was knowledgeable • Yes • No
 - Staff was helpful • Yes • No
 - Staff was courteous • Yes • No
- Comments:

6. If you had difficulty obtaining what you needed, please tell us why.

- all that apply
- Item was checked out
- Library had no material on the subject
- I could not find the material
- Staff could not find the material
- I did not ask for help
- Other (please specify)
- All computers were in use
- I don't know how to use computers
- Library computers were down
- Needed to use interlibrary loan

Comments:

7. Rank this library facility.

	Poor	Adequate	Good	Very Good	Excellent
Condition of the outside of the building	1	2	3	4	5
Condition of the inside of the building	1	2	3	4	5
Ease of access entering the building	1	2	3	4	5
Ease of access inside the building	1	2	3	4	5
Signs and signage	1	2	3	4	5
Layout and arrangement	1	2	3	4	5
Provision of seating and tables	1	2	3	4	5
Cleanliness	1	2	3	4	5
Lighting	1	2	3	4	5

Comments:

8. Where would you be most likely to see information about the Raymond Village Library programs and services? (all that apply)

- Cable TV
- Raymond Road Runner
- Local newspapers (please specify) _____
- Town Hall
- Library
- Other: (please specify)
- www.raymondmaine.org
- School folders

Raymond-Casco Historical Society Question Corner

WHO WERE SEBAGO-PRESUMPCOT'S NATIVE PEOPLE ("Indians")?

(on Maine's Wabanaki-English-French Colonial Frontier, 1600s - 1760s) by Alvin Hamblen Morrison, Ethnohistorical Anthropologist (Raymond resident)

In a one-word but general answer, they were WABANAKIS (meaning "*Dawn-Landers*"). More specifically, they were part of that group's overlapping ABENAKI & PENNACOOK Alliances. They spoke a language of the Eastern Branch of the ALGONQUIAN Language Family.

They increasingly became connected with both the PIGWACKET/ PEQUAWKET Band of the SACO RIVER Indians (in the Fryeburg, ME, area) and the ST. FRANCIS / ODANAK French Missionary village (in southern Quebec on the St. Francis River near the St. Lawrence River).

Best-known Sakamos / Sagamores / "Chiefs" on the Presumpscot River were:

SCITTERYGUSETT / SKEDRAGUSCETT / SQUIDRAYSET

1623 Cordially welcomed entrepreneur Christopher Levett at his house at First Falls, and soon adopted Levett as his "cousin."

1657 Signed deed with fisherman Francis Small to (share? or abandon?) a very large tract of land up-river.

POLIN / POLAN / POORAN

1739 Went to Boston to complain to Governor & Council about dams blocking fish migrations; he won the case then but lost the cause later.

1756 Already withdrawn to St. Francis when he raided New Marblehead (Windham) in revenge for lost use of the river; he was killed in that raid.

Zoning Board Of Appeals Needs Volunteer

Have you ever wanted to get involved in Raymond's future? The Appeals Board is in need of a new volunteer to sit on the Board. Meetings are the fourth Monday of the month unless that date is a holiday, and then the Board will vote a change of date. They also meet the Sunday 8 days prior to the meeting, for a site walk of the properties which will be coming before the Board.

The purpose of the Zoning Board of Appeals is to rule on whether a property owner can receive a waiver of the town's ordinance. No specific education or training is necessary. If interested, please forward a letter of interest and a short resume to Louise Lester, Town Clerk, 401 Webbs Mills Road, Raymond, ME 04071 or e-mail the information to louise.lester@raymondmaine.org. If you have any questions, please call the town office and talk with Louise Lester; Karen Strout, Board Secretary; Paul White or Jack Cooper, Code Enforcement Officers.

Raymond Village Library Survey

What Does the Future Hold for the Raymond Village Library?continued from previous page

9. Which programs or activities would you most likely attend or use?

all that apply

- Baby story time
- Preschool story time
- Toddler story time
- Meet the Author programs
- Book discussion group
- Delivery service to the homebound
- Other: (please specify)
- Art Museum pass
- Book sales
- Travel programs
- Craft workshops
- Computer terminals and databases
- Poetry readings
- Health programs
- Plant sales
- Writing workshops

10. Which areas of the library's collection would you like to see expanded?

all that apply

- General Nonfiction
- Religion/Philosophy
- Science Fiction
- Science/Technology
- Health/Medical
- Children's materials
- Foreign Language materials
- Other: (Please specify)
- General Fiction
- Mystery
- Romance
- Western
- Magazines
- Arts/Culture
- Video/DVD
- Reference
- History
- Travel
- Self Help
- Biography
- Young Adult
- Books on tape

Comments:

11. Which areas of technology would you like to see expanded?

all that apply

- Computer access to the collection
- Computer training
- Additional computers with word processing & spreadsheet programs
- Other: (Please specify)
- Additional internet access stations

12. Are there any services/programs you feel might meet the needs of the community that we do not currently offer?

In an effort to tailor our collection to the needs and wishes of our patrons and to serve you better, we would like to learn more about you. Providing the information below is completely voluntary. All information will be kept strictly confidential.

I am... • Male • Female

Your age group:

- 11 and under
- 12- 17
- 18-29
- 30-39
- 40-49
- 50-59
- 60-69
- 70 or over

Number of family members using Library Card:

_____ 0-5 years _____ 12-16
 _____ 6-11 years _____ 17 to adult

I am... • Year round resident • Summer Resident
 • Non-Raymond Resident

In what part of town do you reside?

- Raymond Village
- Raymond Cape
- Other
- East Raymond
- Route 302 area
- Raymond Hill

If not a resident of Raymond, why do you use the Raymond Village Library?

- Collections
- Convenient location
- Convenient hours
- Other: (Please specify)_____

Do you have computer access at home?

- Yes
- No

How many computers do you have at home?

Do you have internet access at home?

- No
- Dialup
- Highspeed (Cable or DSL)

THANK YOU FOR PARTICIPATING IN THIS SURVEY!!!!

Please drop off completed survey by November 30, 2004
 at the Raymond Village Library,
 Raymond Town Hall or in your child's school folder.

You may also mail it to:

Raymond Village Library
 PO Box 297
 Raymond, ME 04071

We are continually looking for people to volunteer in the following areas:

- * Work within the library
- * Work on Fundraising
- * Serve on a Committee
- * Technology skills
- * Crafts/ Special talents
- * Other skills you may possess

If you would like more information about the library and its services or would like to become part of the volunteer staff at the Raymond Village Library, please feel free to contact us any time by calling 655-4283 or e-mailing us at rlibrar1@maine.rr.com.

Municipal News Brief

By: Don Willard, Town Manager

The Raymond Board of Selectmen took the following actions in October 2004.

1. Phase 1 Groundwater Investigations - former landfill, Egypt Road. Representatives of Woodard & Curran Consulting Engineers presented the results of the Phase 1 Groundwater Investigation at the former landfill site located off Egypt Road. Work on this report commenced during November 2003 with final fieldwork completed in the spring of 2004. The purpose of the Phase 1 study was to gain an understanding of potential contaminants located at the site. The Phase 1 report concentrated on a study of groundwater for contaminants with a general objective of gaining an understanding of what sort of contaminants might be at the site. The landfill investigation determined that groundwater flows through the waste materials, at least during certain portions of the year. Results from the monitoring wells indicate that impact to groundwater has occurred from the landfill down gradient, southeast of the waste material. It does appear, however, that the degree of contamination in the areas tested is not severe. Primary concerns are iron and manganese, with two instances of low levels of volatile organic contaminants identified in the testing program. Although initial investigations have yielded levels of contamination that are not substantial threats to the environment, it is problematic to completely eliminate potential landfill impacts to future development of bedrock wells. The report is available for public inspection and will be available to the Planning Board to evaluate the quality of the water supply in relation to the potential future development of surrounding land. The Selectmen will consider what additional action the town might take with respect to the former landfill. Investigation work to-date has been supported by a 90% Department of Environmental Protection Grant in the amount of \$34,155 matched by a 10% local contribution of \$3,795.
2. Selectmen Bylaws and Policies. The Board of Selectmen, after meeting in workshop session on September 16, 2004, had a preliminary discussion of the draft bylaws and policies. No action was taken during the month of October. It is expected that the bylaws and policies will be considered again as a part of the November 16, 2004, meeting.
3. Appointed five new election clerks: Ginny Parker, Nancy Proctor, Deborah Gideon, Robert Jones, and Faith Towle.
4. Panther Run Rest Area – Maine Department of Transportation (MDOT) – offer of conveyance. The MDOT has offered the rest area as a gift from the state with the condition that the property remains in

public use and not be sold. The rest area comprises one acre of land with 800' of water frontage. Town acceptance of this gift would require town meeting approval. The Selectmen instructed the Town Manager to contact the Maine Department of Transportation and express initial interest in acquiring the parcel. It is likely that this offer will be considered by both the Budget/Finance Committee and Board of Selectmen preliminary to consideration at the May Annual Town Meeting.

5. Accepted the resignation of Aurel Gagne from the Zoning Board of Appeals.
6. Appropriation Control Report. Town Manager Willard announced that both the town's appropriation and revenue budget reports are on track and noted that automobile excise tax continues to exceed revenue expectations.
7. Review and authorize Payroll and Treasurer's Warrants dated October 5, 2004, October 14, 2004, and October 26, 2004.
8. A Special Town Meeting was held on October 14th at the Jordan-Small Middle School at 7pm to consider adoption of the 2004 Comprehensive Plan, the possibility of constructing a digital broadcast studio, and the establishment of a local board of assessment review. Detailed information regarding this meeting is contained in an article reprinted by permission of the Lakes Region Suburban News located below on this page.

Raymond Passes Comp Plan, Delays TV Studio

By: John Balentine

Staff Writer For the Lakes Region Suburban Weekly

(The following article first appeared in the Oct. 22 issue of the Lakes Region Suburban Weekly.)

About 200 Raymond residents gathered at Jordan Small Middle School on Thursday night, Oct. 14 to discuss and vote on three items at a special town meeting. Voters approved the proposed comprehensive plan and the creation of a local Board of Assessment Review. Voters, however, decided to put off a vote on a proposed digital TV studio until the regular Town Meeting next May. The meeting took about one-and-a-half hours to complete. The first hour was devoted to discussing the comprehensive plan. Three-quarters of voters approved the final version of the comp plan, which has already received approval from the State Planning Office. Public comment once again centered on development concerns in the town. During one exchange, a resident asked why the town was approving this at a special town meeting and received an answer by a woman in the audience who said the town needed to act fast to handle rising development trends. There was also a concern about an old aspect of the plan that called for 10-acre lot minimums in rural zones. Brad McCurtain, co-chair of the comp plan committee, said the 10-acre requirement, which has since been changed to 5-acres, was for single house developments only. If additional dwellings were built close together, the 10-acre limits would have not been enforced. Instead, two-acre or three-acre limits per home would remain in force. During the remainder of the hour, Town Planner Robert Faunce and the comp plan committee's consultant Rich Roethe answered several other questions from town residents mostly concerning the rapid increase in development throughout the town. ³I was very pleased with the process Thursday night,² McCurtain said. ³You can't help having some town members upset with any plan for matters of self-interest. That said, I couldn't be happier with how the town meeting went. It wasn't as controversial as some of the forums we had were. I thought it went pretty smoothly.²

TV Studio

Once the comp plan was approved attention turned to a proposal submitted by Selectman Michael Reynolds for the town purchasing equipment for broadcasting town meetings such as school board, selectmen, zoning and planning board meetings as well as special events around town. Public comment was stifled when resident Ernest Allen moved to table the item to next May's annual town meeting. Allen's tabling motion received majority support from the assembled voters. The tabling motion didn't come as a surprise to many in town since selectmen had already discussed the possibility that the late addition of the TV studio to a special town meeting agenda originally

designed to discuss the comprehensive plan may be perceived by townspeople as the board's attempt to slide an expensive item ³in through the back door.² Reynolds, who championed the idea of the television station, was least surprised by Allen's tabling motion. ³I understand the tabling. And we as a board had discussed that that may happen. But we went along with it because you don't know until you ask,² Reynolds said. If the Palesky tax cap doesn't pass, Reynolds said he won't give up on the idea of the broadcast studio because he feels it's important for a community to have access to public proceedings. ³I was more unhappy that it wasn't even discussed, but that was the will of the people,² Reynolds said. ³But the will of the people, at least what I'm taking away from the meeting, is that want to continue the discussion, but they want to do it at the annual town meeting, and that's fine with me.

Local Board of Assessment Review

Residents approved by a two-thirds margin the establishment of a local board of assessment review, a three-member board appointed by the Board of Selectmen that hears assessment appeals. Tax Assessor Amanda Simpson proposed to the board of selectmen the need for a local board to review abatement requests in anticipation of an increase in requests when new assessments take place next year in the wake of Raymond's town-wide revaluation. The local review board replaces the current abatement process officiated by the three-member board of Cumberland County Commissioners. Under the new system, residents questioning a property assessment will first file an appeal with the Board of Assessors, essentially the Board of Selectmen. If the Selectmen deny the appeal, property owners can then appeal to the board of assessment review. If the that body denies the appeal, homeowners will then have one more chance by petitioning Maine Superior Court. Simpson believes the local board will be a better system because local people with local knowledge will better be able to decide property values around town. She also said local review boards have become more necessary as Cumberland County grows in population.

Code Enforcement Office

Here is the breakdown for permits issued in September.

- 9 New homes with a stated value of \$1,907,000
- 5 Sheds valued at \$55,320
- 8 Additions or alterations valued at \$368,500
- 6 Garages valued at \$147,500
- 2 Demolitions at \$3,000

Total building permit fees collected in September was \$9,774.85

Comprehensive Plan Implementation Committee

The Comprehensive Plan was adopted at a special town meeting on October 14, 2004. It is now necessary to form a committee to consider plan implementation. This work will lead to the creation and adoption of certain draft ordinances for future town meeting consideration which will address the goals and objectives within in the Plan. This will bring Raymond's Ordinance into compliance with the 2004 Raymond Comprehensive Plan.

If you are interested in being a part of this work, please contact Louise Lester, Town Clerk, and let her know at Town Office, 401 Webbs Mills Road, Raymond, ME 04071; 655-4742 ext 21; or louise.lester@raymondmaine.org.

2005 Dog Tags Available

Dog licensing can now be done for 2005. If you have a dog over the age of 6 months, it should be licensed. A Rabies Certificate must be produced and if neutered, a Neutering Certificate if the Town Office doesn't have it on file. The fee for a neutered dog is \$6 and non-neutered \$10. All dogs must be licensed by January 31, 2005. Dogs licensed after January 31 will incur and additional \$15 late fee.

Please understand that by having your dog licensed, anyone finding your stray pet will be able to trace it to you, thereby alleviating the possibility that it will go to a shelter. Licensing funds contribute to stray animal care in the town and state and support the State Veterinarian Laboratory in Augusta as well as Maine State Humane Agents which investigate animal abuse cases.

The Knottiest Patrol Of Troop 800 And The Casco Bay District.

The Boy Scouts of America Casco Bay District Fall Camporee was held at Camp Hinds October 15th to 17th, attended by Boy Scout Troops from all around the region including Raymond's Troop 800. Among the many activities taking place was the knot tying competition. Troop 800's Wolf Patrol, with some help from other Troop members, took top honors as the Knottiest Troop of the Camporee and brought home the plaque to prove it. The winning team included John Grondin (Predators Patrol), Drew Gagnon, Patrol Leader Andrew Jordan, Assistant Patrol Leader Pat Lockwood, Steve Clark (Troop Guide), Josiah Coyle, Tyler Winde and Senior Patrol Leader Ian Hanley.

Raymond Fire/Rescue HOT SPOT

"KEEPING OUR COMMUNITY SAFE THROUGH EDUCATION"

I hope this finds all of you warm and in good spirits. It is yet again that time of year when the leaves change, our docks are out of the water and our houses are being warmed by our furnaces, monitors and woodstoves. This time of the year is an important time for all of us to stop and evaluate the safety of our businesses, homes and family.

There are many things we need to be aware of when it comes to heating our properties.

- **Chimneys** - *When was the last time they were cleaned and inspected?* It is recommended that your chimney be inspected and cleaned at least once a year by a professional.
- **Furnace, Boiler, Kerosene heaters** - *When was it last serviced?* Most manufactures suggest that they be serviced yearly by a certified technician. This service will not only make sure that it is operating safely but will insure the machine is running efficiently which may lower the amount of fuel it is using.
- **Smoke and Carbon Monoxide Detectors** - *Does it work?* Both detectors should be tested monthly. Batteries need to be replaced every six months. (When you change your clocks) These two devices are unquestionably the two most important life safety tools you have. These detectors offer you and your family an early warning that there is a problem. Carbon monoxide is an odorless, colorless, and tasteless poison that is very harmful and deadly. Without this detector, you and your

family would not know if there is a dangerous gas in your home or business.

This is also the time of year we get ready for the holidays. Here are a few things to remember!

- ✓ **Extension cords** - Extension cords, though very helpful, can also be dangerous. Please remember that these cords should not be overloaded, run under rugs, doors or furniture. If you have to use these types of devices consider the use of a UL approved circuit protected power strip.
- ✓ **Holiday lights** - Lights offer a great ambiance to the holiday season. Keep in mind that these lights also give off heat and should not be left on for long periods of time or when you are not at home or work. Please read the operating and installation manual.
- ✓ **Christmas Trees** - Trees need to be watered daily. If your tree becomes discolored or the needles start to fall off, you should discard and replace it. When buying a live tree look for trees that have been dipped in a fire retardant. Live Christmas trees are not allowed under State Law to be displayed in any business or public building.
- ✓ **Candles** - Candles should be kept out of reach of children and pets. They should also be put on a sturdy and not flammable setting. Make sure candles are not left unattended or burning when you are not home or at work.

I would like to thank all of you who enjoyed and supported this year's Haunted House. We look forward to seeing all of you again next year. Until next month...work safe, play safe, **STAY SAFE!!!**

Please send any request or comments to
josh.stevens@raymondmaine.org

RAYMOND FIRE/RESCUE LOGS

DATE	TIME	LOCATION	TYPE OF CALL
10/2/2004	32	PATRICIA AVE	UNPERMITTED FIRE
10/2/2004	547	ROOSEVELT TRL	PUBLIC ASSIST
10/2/2004	1608	SHAW RD	DIFF. BREATHING
10/3/2004	405	GORE RD	CHEST PAIN
10/3/2004	1848	RIDGE RD	HEAD INJURY
10/3/2004	2051	CAPE RD	GEN. WEAKNESS
10/3/2004	2057	WEBBS MILLS RD	MOTOR VEHICLE
10/4/2004	1005	PULPIT ROCK RD	CHEST PAIN
10/6/2004	1424	M/A CASCO	FIRE ALARM
10/7/2004	429	GORE RD	DIFF. BREATHING
10/7/2004	1139	ROOSEVELT TRL	CAR FIRE
10/8/2004	220	ROOSEVELT TRL	FIRE ALARM
10/8/2004	1440	SHAKER WOODS	MEDICAL EMERGENCY
10/9/2004	1825	SHAKER WOODS	GEN. ILLNESS
10/11/2004	1306	ROOSEVELT TRL	SUBJ. CHOKING
10/12/2004	615	M/A WINDHAM	SEIZURE
10/13/2004	513	M/A WINDHAM	STRUCTURE FIRE
10/13/2004	1432	ROOSEVELT TRL	ELECTRICAL FIRE
10/13/2004	1815	HASKELL AVE	SUBJ. UNRESPONSIVE
10/14/2004	1726	M/A GRAY	MOTOR VEHICLE
10/15/2004	258	KINGSLEY RD	CARDIAC
10/16/2004	20	ROOSEVELT TRL	GEN. ILLNESS
10/16/2004	1217	M/A WINDHAM	DOG BITE
10/17/2004	933	ROOSEVELT TRL	GEN. ILLNESS
10/18/2004	902	AUTO AID GRAY	GEN. WEAKNESS
10/18/2004	1440	MAIN ST	PUBLIC ASSIST
10/19/2004	1310	VIOLA AVE	ATV ACCIDENT
10/21/2004	1345	RAYMOND HILL RD	UNKNOWN MEDICAL

This space intentionally left blank

Geographic Information Systems (GIS) Program

Recently, the GIS Program submitted examples of Raymond GIS applications to the Maine Office of GIS for publication to a web page, currently under development, aimed specifically at K-16 education and municipal audiences. "What can GIS do for ME?" is intended to demonstrate the many ways GIS can benefit the citizens of Maine. One of the goals of this endeavor is to encourage youth to pursue careers in science, technology, mathematics and engineering. GIS encompasses each of these studies. The following are examples of accomplished and ongoing projects, most of which are available on the Raymond web site. <http://www.raymondmaine.org/committees/technology/gis/>

- Digital tax maps. Parcel maps are available to the public at the Town Office and on-line. These tax maps will be instrumental in the upcoming town-wide revaluation scheduled to begin in 2004.
- Provided the Raymond Comprehensive Planning Committee with specific maps to be included in the updated Comprehensive Plan as follows: Developed Parcels; Zoning; Future Land Use; Development Constraints; Aquifer Map; Wetlands; Habitat; Water Resources and Building in Raymond, Maine 1892-2001.

- Implemented GIS within the Raymond Fire/Rescue Department. The Raymond Dispatch Office and Fire/Rescue now have Arc Explorer 2 that provides online access to a current Street Index as well as parcel and hydrant locations. Additionally, Raymond Fire/Rescue has been exploring regionalization and mutual aid with neighboring communities. Three maps have been prepared to present to these communities including a Lakes Region Fire/Rescue Map; Five and Ten Mile Buffer Map; and a Greater Portland Suburban Mutual Aid Map.
- Preparation of an Open Space Map for the Raymond Conservation Commission delineating 25 acre and 50 acre parcels.
- Updated and digitized the Raymond Rattlers Snowmobile Trails Map. The Town of Raymond website now features the Snowmobile Trail Map.
- Raymond Street Index updates using Global Positioning System (GPS). Continued development in Raymond requires frequent updates to the Street Index to track new roads and provide current information to all departments including Fire/Rescue.

- Development of a map of events and road closures for the annual Windham Rotary Ice Fishing Derby on Sebago Lake.
- GPS Technology is now being used by the Raymond Waterways Protective Association (RWPA) to document the location and extent of Milfoil infestation in Sebago Lake.
- Recently the town contracted with Malone & MacBroom Engineers to conduct a Pavement Management Survey. The Raymond Street Index, established and maintained by the GIS Program, is being used as base data to assist in this survey.
- The Raymond Public Works Department is currently using GPS technology to gather culvert and sign data for use in the Sign Inventory Management System (SIMS) sponsored by the Maine Local Roads Center and the Maine Department of Transportation (MDOT). GIS will be used to evaluate and analyze the information.

If you would like additional information regarding GIS in Raymond, please feel free to contact GIS Coordinator Elisa Trepanier by telephone at 655-4742 ext. 61 or by e-mail at elisa.trepanier@raymondmaine.org.

In Appreciation:

The Raymond Board of Selectmen wishes to express their appreciation and thanks to the Comprehensive Plan Committee and all involved in the development of the 2004 Raymond Comprehensive Plan. Under the leadership of co-chairs Dr. Jim Stephenson and Brad McCurtain, Raymond now has a framework to help guide future community planning decisions. After three years of exploring alternatives and creating a shared vision, it is now time to begin the process of implementing the strategies and goals outlined within the Plan. Interested citizens are encouraged to contact the Town Manager at 655-6994 ext. 31 or by e-mail don.willard@raymondmaine.org for more information.

The Raymond Board of Selectmen would also like to express their appreciation to the Beautification Commit-

tee for their hard work in keeping the "gateway to Raymond" looking beautiful this summer. The Route 302 Improvement Project was completed in 2003 through a cooperative effort between the town and the Maine Department of Transportation and designed to improve both the function and aesthetics of the Route 302 corridor and thereby promote economic vitality within Raymond's Commercial District. In addition to the gardening on Route 302, the Committee has also maintained and created landscaped gardens at the Jordan-Small Middle School and the Town Office. The Beautification Committee logged 456 hours of work this summer in the heat and inclement weather with their own tools and a tremendous amount of determination. Thank you for all you have done to help make Raymond a community to be proud of! Anyone interested in learning more about this Committee's work or volunteering next year, please contact Sharon Dodson at 998-2372 or by e-mail rdodson@maine.rr.com.

Town Office Holiday Schedule

This is to announce the office hours of the Town Office over the Thanksgiving, Christmas and New Year's holidays.

- **Thanksgiving** - Closed for Thursday, Friday and Saturday, November 28th, 29th, 30th
- **Christmas** - Closed December 24th at noon, closed December 25th
- **New Year's Day** - Closed December 31 at noon, closed January 1st

HAPPY HOLIDAYS!

Recent Activities Of RWPA

By: Noralee Raymond, RWPA Director

Thank you to the Dingley Brook Milfoil Volunteers

RWPA and landowners around Dingley Brook would like to thank the twenty volunteers who assembled to help remove the variable milfoil that was threatening the brook's natural habitat. Volunteers gathered in the morning chill on October 17th, installed a barrier to prevent milfoil fragments from spreading to Sebago Lake, and began handpulling milfoil and filling 5-gallon buckets. Small holes were drilled in the bottom of the buckets to help remove water, making the milfoil filled buckets easier to carry to shore. The milfoil was dumped on neighbors' docks to drain and then volunteers used wheelbarrows to transport it through the woods up to the road. By the end of the afternoon, the milfoil filled the back of the one ton truck.

Though we successfully cleared a large section of the brook, there is still more work to be done. Due to the high water level, we were not able to remove the largest, densest colony at the mouth of the brook. RWPA and Dingley Brook landowners are seeking approval from Inland Fisheries and Wildlife to temporarily restrict access to this section of the brook so that a benthic barrier (bottom cover) can be placed over the infestation. Benthic barriers have been used successfully in other infested areas to kill the milfoil and its roots. Due to the brook depth (5 feet) there is a higher risk of boat props getting caught if the barrier billows, making it necessary to use buoys to temporarily restrict access. We hope to put the benthic barrier down in the spring.

This project would not have been possible without our volunteers. Thank you to everyone who participated and helped to make this removal a success. Volunteers included several Boy Scouts, RWPA Board members, landowners near the brook on both the Raymond and Casco sides, and several other Raymond residents. We would also like to thank Scott and Sue Crockett for taking the lead in organizing the project and providing everyone with hot coffee and donuts throughout the day.

Launch Inspections

We promised more details on our 2004 Lakes Ranger Program and here they are. Take a look at the 2004 Summary Totals chart. Between Memorial Day and Labor Day our inspectors were at Raymond's boat ramps. They inspected a total of 1,882 boats (1,417 at Raymond Beach, 451 at Crescent Lake, 14 at Thomas Pond). This is a tremendous increase from our 2003 season when we inspected a total of 401 boats. The large increase in inspection numbers is likely due to three factors: focusing more coverage at the two busiest Raymond ramps, consistent schedules by both

inspectors, and identification of maximum use (peak) hours.

More than thirty percent of the 1,417 boats at Raymond Beach were inspected both entering and exiting the lake. This is important because not only are we trying to keep invasive plants out of Sebago Lake, we are trying to keep variable milfoil from spreading from Sebago into other lakes. Ninety-one percent (91%) of the boats inspected had an invasive sticker present, and 91% of the boaters felt that the sticker cost was reasonable (though the percentages are the same, there is not a direct correlation between sticker presence and cost).

Native plants were found on seven (7) boats at Crescent Lake. Eighteen (18) boats at Raymond Beach-Sebago Lake had plants on the boat, with 12 confirmed reports of invasive plants. Eleven (11) boats exiting Sebago Lake had variable milfoil attached and one boat entering Sebago Lake had curly-leaved pondweed attached between the boat and trailer. The Connecticut boat owner had washed the boat after exiting the previous lake



Volunteers remove milfoil from Dingley Brook

ramps with only two inspectors. We hope to have more volunteers trained to help us increase our coverage at all the ramps in 2005. Our 2004 Lakes Rangers, Mark Dixon and Deb Cutten, did a tremendous job at the ramps to ensure that invasive plants are not entering Raymond's lakes and educating boaters on the importance of inspecting their own boats, props, anchors and trailers when entering and exiting all lakes. Please be sure to thank them for all their hard work.

A Guide to Forming Road Associations

The Soil and Water Conservation District's recently published "A Guide to Forming Road Associations" is a great resource for existing and potential road associations. Forming an effective road association provides an organizational structure to establish a maintenance plan, making roads easier to travel and reducing road maintenance costs over time. Included with the guide is a CD that contains all the information you need to become an effective association, with sample maintenance agreements, bylaws, meeting minutes, budgeting, and more. Learn more about the benefits of an effective road association, developing a maintenance plan, group decision making process, and running effective meetings. Contact RWPA at 671-3329 or lakes@raymondmaine.org for a copy of this new guide.

SUMMARY 2004 INSPECTION SURVEY TOTALS

Labor Day to Memorial Day

	Raymond Beach	Crescent Beach	Thomas Pond	Panther Run	Combined	% of Total
State of Registration						
ME	1223	359	13	0	1595	85%
MA	56	29	0	0	85	5%
NH	85	41	1	0	127	7%
CT	17	4	0	0	21	1%
VT	1	2	0	0	3	0%
Other	35	16	0	0	51	3%
Total	1417	451	14	0	1882	100%
Boat Have Sticker?						
Yes	1287	345	11	0	1643	91%
No	110	51	0	0	161	9%
N/A*	20	55	3	0	78	N/A
Total	1417	451	14	0	1882	100%
* canoes and kayaks are not required to have a sticker						
Sticker Cost Reasonable?						
Yes	1308	385	13	0	1706	91%
No	91	49	1	0	141	7%
N/A*	18	17	0	0	35	2%
Total	1417	451	14	0	1882	100%
* person had previously answered the question or inspector did not interview						
Plants on Boat?						
Yes	18	7	1	0	26	1%
No	1399	444	13	0	1856	99%
Total	1417	451	14	0	1882	100%
Invasive Plant?						
Yes*	12	0	0	0	12	46%
No	6	7	1	0	14	54%
Total	18	7	1	0	26	100%
*At Raymond Beach 11 boats exiting had Variable Milfoil attached. One boat entering had Curly-leaved pondweed						

(Candlewood Lake, CT) and were surprised to have our inspector find the plant because they had washed their boat. Remember washing your boat is not sufficient, so please visually inspect your boat when entering or exiting any waterway. During each shift at Raymond Beach, our rangers also spent time picking up fragments that had washed onto the beach.

Our biggest challenge is attempting to cover four

Septic System DO's and DON'T's

If you missed the Septic System Workshop last month, don't fret, RWPA President Charlie Turner attended the workshop and we have copies of the handouts. Some important notes to remember:

- Do pump your tank regularly (every 2-5 years depending on occupancy and usage level).
- Do spread out loads of laundry over several days and use liquid detergent
- Do divert all surface water away from the septic tank and leach field
- Do limit use of caustic household cleaners and chemicals
- Do not use additives of any kind (yeast, enzymes, root-killers, microbes).
- Do not dispose of fats, grease, coffee grounds or egg shells down the drain.
- Do not use powdered soaps or detergents
- Do not flush non-biodegradable items (diapers, paper towels, feminine hygiene products, cigarette butts, kitty litter) down the toilet.
- Do not drive over or store heavy materials on any part of your system

If you want additional information on the above points, please contact us at 671-3329 or lakes@raymondmaine.org, and we can send you more details.



Milfoil pulled from Dingley Brook

Home Heating Assistance.

Representative Joe Bruno of Raymond reminds people to apply now for heating assistance under the Low Income Home Energy Assistance Program. The program, which helps approximately 45,000 low income Maine households pay for their heating costs, distributes an average benefit of \$450. The money, which is distributed directly to the fuel company, is used to offset unpaid bills or as a credit against future fuel deliveries. The credit is good for up to twelve months.

The Low Income Home Energy Assistance Program is open to any family with an income not exceeding 150% of the federal poverty guidelines. For a family of four the income ceiling for eligibility is \$28,275. If an elderly person or child under two is part of the household, the income ceilings are even higher. "Because it may take several weeks to schedule individual application interviews," said Representative Bruno, "eligible persons should contact their local community action program and get their applications in as soon as possible."

Eligible individuals interested in applying for low income home energy assistance should contact their local community action program or the Maine State Housing Authority by calling 1-800-452-4668.

Reduce Your Property

Taxes!!!

You may be eligible for a Homestead Exemption which would reduce the taxable amount of your property value! Residents of Raymond that meet the following criteria are eligible for a Homestead Exemption as provided by state law.

- ◆ You must be a legal resident of Maine.
- ◆ You must have owned qualified homestead property in Maine for at least 12 months prior to the April 1 after the date your application is received by the Assessing Office.
- ◆ Your residence for which you make application must be declared as your permanent residence and the only property in the US for which you claim a homestead exemption.

You may check your most recent tax bill to determine if you are currently receiving an exemption. If you are, you need not re-apply unless you move to another address in Raymond or elsewhere in the state.

Applications are available on the Maine Revenue Services website www.state.me.us or the Raymond community website www.raymondmaine.org. Applications are processed once a year for the assessment year which begins April 1 of each year.

If you have any questions regarding your eligibility, you may call the Assessing Office at 655-4742, ext. 51. or e-mail Amanda L. Simpson, CMA, Assessors' Agent at amanda.simpson@raymondmaine.org.

Raymond Recreation Basketball

We announced in the October *Road Runner* that Dave McGowan is stepping down as director of our basketball program. If you are interested in having a child participate in a basketball program here in Raymond this winter, plan to attend an organizational meeting at JSMS cafeteria on Wednesday, November 10, at 6:30 pm. We need leaders, coaches and support workers to make the program a reality. If you have questions or suggestions for leadership of the program, call Pat at 655-4657.

JSMS Yearbook Costume Party A Big Success

The yearbook committee held a costume party & dance for 7th & 8th grade students at Jordan-Small Middle School on Friday, October 22nd. A terrific time was had by all! The event was a successful fundraiser for the yearbook, and the students enjoyed a supervised night out wearing fun costumes. Look for the Yearbook Committee to be soliciting inexpensive business ads from the community to help defray some of the cost to students. Special thanks go to the chaperones: Charlie Miller, John Powers, Debra Martin, Tammy Baker, Karyn Knights, Pam Bruno, Stephanie Minot, and the parents who contributed treats for the evening, and the clean up crew.

Aquatics Programs At St. Joseph's College

SWIM LESSONS

Registration is taking place by mailing in registration and payment or by coming in person on October 26- 27- 28 from 9am to 7pm. Classes will start the week of November 1st. There will be no classes the week of November 22nd.

Place: St. Joseph's College - Harold Alfond Student Center - Pool

Time: Classes are offered Monday through Friday mornings, afternoons, evenings and Saturday mornings. A variety of class options are available. We have classes for infants, toddlers, pre-school, school age and adults.

Fees: The classes for infants, toddlers and pre-school age children are ½ hour classes for six weeks and the fee for the program is \$ 46. Youth age six years through and including adults meets for 1 hour once a week for six weeks, and the program fee is \$ 56. Saturday classes will start October 30.

About the Program: St. Joseph's College offers swim classes for infants, toddlers, pre-schoolers, youth and adults. The classes available are to teach a range of skills from water adjustment to basic swimming skills. Our instructional goal is that swimmers who have finished the lesson program will demonstrate proficiency in those skills designated by the American Red Cross, while having fun in a safe, comfortable atmosphere. Certificates are also offered as a record of course completion.

Classes are also available for more advanced children who wish to have more of a challenge. These programs are: Basic Rescue, Water Safety Aide, Guard Start, Lifeguard Training and Water Safety Instructors Program.

WATERAEROBICS

Date: Ongoing classes throughout the year

Time: Monday, Wednesday & Friday 7-8pm. Tuesday, Thursday, Friday 8- 9am.

Fee: \$5 each class or a punch card of 12 passes for \$40.

About the Program: For the swimmer and non-swimmer alike. Participants will receive fantastic low impact aerobic exercises without the joint stress common with land aerobics, while giving a good cardiovascular workout. Emphasis is on an overall body workout while having fun! Those who would like to do deep water during this program are encouraged to do so.

ARTHRITICISE

Date: Ongoing throughout the year.

Time: Tuesday & Thursday 11am -11am

Fee: \$5 each class or purchase a punch ticket for \$40 with 12 passes.

About the Program: Range of motion exercise program aimed at increasing muscle and joint flexibility. This program is great for those suffering pain of arthritis, other debilitating joint diseases and any health condition needing help with range of motion. This will not be an aerobic or a cardiovascular program

LAP & OPEN SWIM TIME

The following times are:

Monday through Friday

6:30- 8am Lap Swim Only

12-1:30pm Lap & Open Swim

5- 6pm Lap & Open Swim

Saturdays and Sundays

(Start the week of Sept. 12)

1-4pm Lap & Open Swim

SPLASH PARTIES

(Private Pool Parties for your group)

Times: Fridays 8- 9pm or

Saturdays or Sundays 12- 1pm or 4-5pm

We have our climbing wall open before or after the splash parties upon request. For more information: Call Carolyn Vail at 893-6669

LIFEGUARD TRAINING

Date: Starts: November 9, Tuesdays

Place: St. Joseph's College Harold Alfond Student Center- Pool

Time: Tuesdays, 4 to 9pm for 7 weeks

Fee: \$ 175

About the Program: In this program, participants learn about the duties and responsibilities of a lifeguard and how to carry them out. Lifeguarding techniques will be taught both in the water and in the classroom. Prerequisites are tested on the first day of class. They are as follows: participant must be at least 15 years of age, perform a 500 yard swim, retrieve a ten pound object from nine feet of water, and tread water for 2 minutes. Upon requirement completion of the course, participant will receive Lifeguard Training, CPR for the Professional Rescuer, and a First Aid certificate. For more information: Call Carolyn J. Vail at 893-6669.

Raymond Recreation: Friday Night Skiing

Prices (includes bussing for 8 weeks)

Program begins January 7, 2005

Lift ticket: \$124

Lift/Ski Rental \$188

Lift/Snowboard Rental \$204

Helmets \$22

Lessons not available

Wanted: ski equipment hauler.

Have trailer, need vehicle/driver

Free lift ticket provided.

Must be reliable.

Any questions, call Peter Walgreen 627-4504

Scholastic Book Fair

Raymond Elementary School

Dates: November 18th- 24th, 2004

Times: Thurs, Fri, Mon, Tues 8:15 - 4:00

Wednesday 8:15 - 12:00

Friday evening hours: 6:00 - 8:30

Put this on your calendar so you don't forget! Students can shop during their library time that week. We can help them find a book. Just write us a note asking us to help them.

Books make great gifts!

Many great books for under \$5

Every book purchase receives a

raffle ticket for a chance to

win books and posters.

Proceeds support the
Raymond PTA school programs

Open to the Public - Everyone Welcome

Students can pay with cash and checks

made payable to "Raymond PTA."

Adults can also use Visa, MasterCard and

Discover

If you have any questions, please contact:

Leigh Walker 655-2135

Announcing New Raymond Schools District Web Site

<http://www.raymondmaine.org/rsd>

The Raymond School Department is pleased to announce a new district website. Our goal is to make access easier and more efficient for individuals seeking information on the school district. The website still has some portions under construction, so please be patient as we complete the sections of the site.

We welcome your suggestions for improving the site. Let us know what changes we can make to improve your experience.

Contact: techservices@raymondmaine.org with suggestions.

RAYMOND REC CITRUS FUNDRAISER

When you think "fruit for the Holidays," we hope you will consider purchasing fresh Indian River grapefruit and oranges from Florida from Raymond Recreation Association. We have conducted this fundraising campaign for over 10 years. The sale will run through November 21st. Advance orders only with payment will be taken. Direct shipment from Florida is scheduled for the week of December 1 and will be available for pick-up at 5 Damon Road off Rt. 85 (as in the past, follow signs) on Saturday, December 6th, from 9am to noon. Prearranged pick up could be scheduled at Windy Hill Farm on River Road in Windham during that week.

Proceeds from the sale will be used for funding the summer swimming program sponsored by Raymond Rec. This is our only fundraising effort, and we appreciate your support.

If you do not wish to purchase a box of fruit for yourself, perhaps you would purchase a box that could then be delivered with the food baskets prepared by the Raymond Fire Auxiliary. Just indicate "for Christmas Food Boxes" on the order form.

**To order or make a tax-deductible contribution, mail check and form to:
Raymond Rec, 33 Wawenock Road, Raymond ME 04071 Questions, call 655-4657.**

NAME _____		PHONE _____	
ADDRESS _____			
E-Mail ADDRESS _____			
<i>CIRCLE CHOICE AND GIVE QUANTITY ORDERED</i>			
ITEM	BOX SIZE 2/5 Bushel Small No. Ordered	BOX SIZE 4/5 Bushel Large No. Ordered	Amount Due
Navel Oranges	_____ 17.00ea	_____ 22.00ea	_____
Pink Grapefruit	_____ 16.00ea	_____ 22.00ea	_____
Mixed Box, Oranges & Grapefruit	_____ 18.00ea	_____ N.A.	_____
		Total Due	_____

**Make Payable to Raymond Rec
Mail to: 33 Wawenock Road, Raymond ME 04071**

“Letterboxers Discover The Lakes Region!”

By: Debbie Blanchard

This year marked our most successful season ever for the Lakes Region Letterbox Trail!. As soon as people saw our trail listed on the national website (www.letterboxing.org) they came to visit en masse. We literally had a few hundred people collect our stamps this past summer.

In late June we hosted a "Letterboxing Event" at the Hawthorne House where "stampers" from R.I., N.Y., Conn., N.H., and Massachusetts converged to trade stamps, enjoy a pot luck picnic and set out to collect stamps all over the Lakes Region. These hardy individuals had traveled all over Maine (which now has over 200 Letterboxes!) in their relentless quest for more stamps.

I'd like to thank all of our local citizens who allowed us to place boxes on their property for enthusiastic letterboxers. As well, I'd like to thank those local businesses and organizations who continue to support our efforts to maintain and promote our Lakes Region Letterbox Trail: The Good Life Market, Sunset Variety, Clough's General Store, Mains' Pizza, Blacksmith Winery, The Hawthorne Community Association, Raymond-Casco Historical Society, Raymond Village Library, Portland Water District, and Lakes Environmental Association. Thanks also to all of our student monitors who helped watch over our letterboxes during the 2004 season. We appreciate the efforts of all of you who helped to make this season the best ever.

All of our boxes have been collected, cleaned and stored for next year. We look forward to expanding our trail and look forward to even more Letterboxers next year. For more information about Letterboxing, please visit the website listed above. If you'd like to add a box to our trail next year, be a box monitor or become involved with our "Lakes Region Letterbox Trail," please contact Debbie Blanchard at Raymond Elementary (655-8672 or d.blanchard@raymondmaine.org). In the meantime, try exploring sites in other parts of our state. HAPPY LETTERBOXING!

Christmas in the Village

**Please join us for a Christmas Fair,
Saturday, December 4th
8am - 2pm**

**Raymond Village Church
27 Main Street, Raymond**

Balsam wreaths, crafts, attic room, lovingly used toys, new & used Christmas books, cheese wheel, baked goods, lunch counter and much more!

For more information, please call the Church at 655-7749 or email us at rvcme@pivot.net

Raymond Lions Help Fund Guide Dog

Clyde Ricker, one of Maine's representatives to Fidelco Guide Dog Foundation, spoke to the Raymond Lions recently about the prospect of increasing the number of trained dogs available to Maine residents. The cost to raise and train each dog and then acclimate the dog and its "owner" to each other runs an average of \$20,000 and takes about 2 years. Fidelco, based in Bloomfield, CT, currently is able to handle about 65 dogs per year. They anticipate increasing their capacity to 100 within a year or so.

Lions Clubs in central and southern Maine have committed to fund one dog this year, bringing the total Fidelco working dogs in Maine to about 14. There is hope that this can be increased on a regular basis over a period of time.

Pictured is Raymond King Lion Yvette Ward, who

presented a check for \$500 to Clyde toward this project.

The Lions wish to sincerely thank all the residents of Raymond who presented themselves to donate a pint of life-saving blood last month: a total of 57 people. Thank you, Raymond.

The Lions also want to thank those voters who took the time to come and listen to the candidates for State Senate and the State House last month. The turnout was encouraging. Next time we will extend the question and answer period for an additional half hour. For those who were unable to attend, we hope you caught the replay on the local access cable channel.

Any Raymond residents interested in getting involved with helping the community through a service organization are urged to call Dale Gilman at 655-4114, Bob Gilmore at 655-3382 or Charlie Miller at 627-4005.

Windham Center Stage Theater

Come see local teenagers Jean Thornton, Harmony Brown and Grant Dodge of Raymond and many more actors from the local communities as they sing and dance their way across the stage at Windham Center Stage Theater's 30th season opener, PIPPIN!! PIPPIN is the story of King Charlemagne's son who, through trial and error, comes to find the true meaning of life and true happiness.

You are certain to enjoy this hit musical preformed by our talented cast of all ages. The show will run November 5, 6, 7, 12, 13, 14, 19, 20, 21. Friday and Saturday shows are at 8pm, and Sunday shows are at 2pm. All shows are at the Windham Town Hall/Community Center on School Road. Tickets are \$10 for students and seniors, and \$12 for adults. Please Call 893-2098 for reservations.

PIPPIN is directed by Cathy Ryder, with musical direction by Dawn Sample by special arrangement with Music Theater International. For more information please visit our website www.windhamtheater.org.



RES Update

By: Norma Richard, Principal

October was a very exciting month at RES. It started with a huge birthday surprise for me at our Friday Opening on October 1. I was celebrating a very special birthday, and the students and staff surprised me with some very special treats. The biggest treat, and the biggest surprise, was having my mother Lillian Richard (age 87), my youngest sister Terry, and my beloved niece and nephew Sela Rose and Sawyer join us that morning for Opening. The month then ended with the Red Sox winning the World Series. Students and staff at RES are huge Red Sox fans, and we like to think that our Red Sox Rally on the 22nd helped to spur them on to victory.

October was also Fire Prevention Month, and we are always happy to work with members of Raymond Fire and Rescue to provide fire safety training to all of our students. I want to thank Deputy Chief Bruce Tupper, Josh Stevens, and all of the rescue workers who shared their time and expertise with our students. We started this training with a surprise fire drill that included the participation of Raymond Fire and Rescue. The children and staff did an outstanding job following all fire drill procedures, even when the fire trucks came into the yard with lights flashing and sirens blaring. This is also a great time to review fire drill procedures at home with all members of your family. Do your children, and do you, know two different routes to exit your home? Do you have a designated meeting place outside of your house? Have you tested all smoke detectors and replaced old batteries? As the winter heating system gets into full swing, develop a home plan and be sure to practice these safety procedures.

I want to thank Linda Andrews for coordinating this year's Bus Safety at RES. All students and staff participated in bus safety training on October 20. Bus drivers reviewed bus rules and expectations with the students who ride the bus. They also practiced emergency evacuation procedures with the children. Our school rules for SAFETY, RESPECT and INBOUNDS are also in place for all students when riding the bus. Please review these rules



Sparky shares fire safety tips with RES 1st graders.

with your child and reinforce the importance of each child's safe behavior. This is especially true as we head into winter weather and the additional hazards that snow and ice present for our bus drivers.

Our Innisbrook fundraiser has been completed, and I am delighted with this year's sales. I anticipate that orders will be delivered to RES in early November, and we will schedule an evening pickup for working parents. Once again, thank you for supporting RES and the Raymond PTA through your Innisbrook purchases.

We are now entering flu season, and the shortage of the flu vaccine this year means that we all need to practice the very best health practices in order to stay healthy this fall and winter. Encourage your children to wash their hands frequently, maintain a healthy diet, and get plenty of rest. Please do not send children to school if they are sick. We also want to remind parents that children need to be fever free for 24 hours before returning to school. Working together, we will hopefully get through flu season in good shape.

Fabulous Farm Fun At Kindergarten Fall Fest

On Thursday, October 28th, all the kindergarten children, teachers, many parent volunteers and family spectators gathered on the athletic field for their annual Fall Fest. This year's activities included husking corn, tossing apples in barrels, passing apples in aprons without using their hands, dressing up in farmer clothes and shooing the crows out of the cornstalks, "horse" racing around the corral, a hay ride, face painting, digging for potatoes, pumpkin jumping and "Heading South," an opportunity for students to demonstrate bird migration. The students and guests enjoyed an outdoor bag lunch, afternoon snack of apples and apple juice, and playing "Farmer in the Dell" with both students and adults.

This event brought a touch of fun and authenticity to their study of our community, as well as developing friendships, cooperation and unity among the children, classrooms and parents.

The Kindergarten teachers would graciously like to thank so many of the families that donated the needed items (clothes, food, & materials) for our Fall Fest celebration. This special event would not have been possible without the tremendous parent support we received for volunteering to supervise and instruct the children throughout the

day. We are so thankful for their time and tremendous help in setting up and cleaning up, and especially their never ending spirit which they shared with us throughout the entire day. Our very special thanks go to Chipman Farm for supplying us with the hay bales, to April and Ross Wisutskie for transporting the hay bales to school, and to Hannaford for donating two very large bags of corn to husk and paper products.

Many thanks to all and to our young students who participated and showed good sportsmanship and listening skills all through the event. We were very proud of you!

RES Kindergarten Staff:
Mrs. Allen, Mrs. Gillis, Mr. Seymour and Ms. O'Donnell



The "Farmer in the Dell" looking for his wife at the Kindergarten Fall Fest.

Mentoring Takes To The Tenny

The mentoring program paddled up the Tenny River to Crescent Lake in early October as a kick-off event to the year. Thanks go to Camp Hinds and Cathy and Matt Gosselin for the equipment use and paddle instruction.

This is the first of several group outings we organize during the school year to promote outdoor time, exercise and enjoying what our community has to offer. We also support our mentoring pairs in attending cultural events and help them find ways to give back to the community. While mentoring is mostly about the individual friendships formed, it's also about modeling activities that encourage us to stretch ourselves in different ways.

The program continues to look for new mentors during the school year, so it's not too late to give us a call and find out what's involved: 655-8672 ext. 107 or mentor@raymondmaine.org.



Kids 2 Kids: Leaders In Training

The Kids 2 Kids Mentoring Program has started training activities for 7th and 8th grade students who want to become mentors to 3rd and 4th graders. Interested JSMS students attended informational meetings to try out leadership and teambuilding activities they'll be learning and using with younger students. Betsy Stout, a guidance counselor from Windham High School, has been leading the training exercises. Kids 2 Kids meets from 2-4pm on Mondays, and the final training will be offered on November 1st. Student mentors will begin meeting with younger mentees later in November. For more information, contact JSMS mentoring coordinator Debra Martin at 655-4743, ext. 143 or mentorjsms@raymondmaine.org.

Maine Conservation School Field Trip

By: 4th Grade Teachers, Mrs. Blanchard, Mrs. Crockett, Mrs. Potter and Mrs. Spencer

The fourth grade class went on an overnight field trip to the Maine Conservation School on Bryant Pond on October 7 and 8, 2004. This field trip was made possible by the generous donations from the Raymond P.T.A., community members, R.E.S. Bob Marley funds, and parents of fourth grade students. The learning experiences designed for our students included team building and hands-on science activities that directly connected to the Maine Learning Results.

The group from Raymond included seventy-nine students, six staff members, and twenty parents. The enthusiastic group started out on Thursday morning in two school buses and a caravan of parent vans and trucks. It was a wonderful sight to see the support and parent

involvement for our first overnight adventure with fourth grade students.

On our way up to Bryant Pond, we stopped at Snow Falls for lunch. Students were able to have a picnic lunch and walk the trail paths along the flowing river. We arrived at the Maine Conservation School at 1pm. Everyone was buzzing with anticipation. The camp guides met the students with gusto and enthusiasm. Two of the seven guides were registered Maine Guides.

Students were able to settle into their sleeping quarters before any of the festivities began. Some students were able to bunk in a lodge that housed thirty-two boys and thirty-two girls, not including staff members and parents. Some students and parents slept in smaller cabins on cots.

Once our unpacking was finished, we were able



PTA Corner

How you can help our schools:

1. **Save box tops** and drop them off at the school, town hall or library
2. **Drop off your empty printer cartridges** at the schools for recycling
3. Do you have some items you no longer use that you might be willing to donate to the school? **Check out our Giving Tree** list online: http://www.raymondmaine.org/civic_groups/pta
4. Do you shop at Hannaford? Look for the red and white General Mills/Hannaford coupons.



Every time you buy 4 participating items, a \$3 coupon prints at the register. How it works: If you buy 4 items i.e. brownie or muffin mixes (under a dollar each) a \$3 coupon will print. If you buy 12 items, a \$9 coupon will print. Drop the coupon off at either school. Hannaford gives us cash for those coupons! Other products are Progresso soups, Pillsbury pie crusts, Green Giant vegetables and many more. Look for this logo in the store.



Ends December 4th...

Holiday idea: As you think about possible holiday gifts for your child's teacher, check out the Giving Tree. You could give your teacher something they have requested for their classroom. Every teacher is so grateful when they get something from the list!

November Events:

PTA Reflections Program - An Arts Recognition and Achievement program for students

Suzie Brockelbank – 655-4915 sbrockel@maine.rr.com. This program offers students the opportunity to create works of art in four areas: literature, musical composition, photography, and the visual arts. Students are encouraged to create and submit works of art that support a specific theme. This year's theme is **“A different kind of hero.”** There will be two workshops after school, one on Thursday, November 4th, and the other Tuesday, November 9th. We need help supervising these workshops. The time commitment is 1 hour. If you can help, please contact Suzie.

JSMS Fall Festival – November 12th

Helene is looking for people to help supply snacks. If you can bake or buy something, call or e-mail Helene – 655-7562 or rgagnon1@maine.rr.com

Scholastic Book Fair - November 18th – 24th

We are looking for Volunteers to work 2 hour shifts – Contact Leigh Walker – 655-2135 or pta@raymondmaine.org . Great books for children Pre-K through 7th grades at good prices. Books make great gifts, with many books under \$5. We will have Friday night hours! One third of every purchase goes back to the schools.

Holiday Fair - Friday, November 19th

Cake Walk, movie, gift shopping, pie sale, book fair, raffles, and great fun ...come join us.

Thank you to everyone who supported our fall fundraisers. Every purchase helped our schools.

3RD ANNUAL RAYMOND PTA HOLIDAY FAIR

FRIDAY, NOVEMBER 19, 2003
6 – 7:30PM

RAYMOND ELEMENTARY SCHOOL

Holiday Shopping
A HOLIDAY GIFT SHOP ESPECIALLY
FOR CHILDREN
ALL GIFTS - \$2

SHOP FOR FAMILIES, FRIENDS
AND PETS!

PROCEEDS BENEFIT YOUR PTA

CAKE WALK

IT'S THE BEST GAME IN TOWN
JOIN THE FUN AND WIN A CAKE!

THANKSGIVING PIE SALE

YUMMY DESSERTS FOR THANKSGIVING
COME EARLY FOR THE BEST SELECTION

SCHOLASTIC BOOK FAIR
SHOP FOR HOLIDAY GIFTS FOR
FAMILY AND FRIENDS
(BOOKS MAKE GREAT GIFTS
FOR TEACHERS!)

MOVIES
STOP IN FOR A FREE MOVIE AND
POPCORN

HOLIDAY FUN FOR YOUR FAMILY

to see the beautiful picturesque views from the shore of the camp. The Maine Conservation School is nestled alongside Bryant Pond. The sunny warm skies and brilliant color of the far-off trees were spectacular. Students began to have a taste for the fabulous opportunity that lay in store for them.

Students were then broken into groups with guides to begin their journey into observation, inquiry, team building, outdoor recreation, sensory development, conservation, survival, science, and fun. The Learning Results that were covered during this experience were habitats, adaptations, classification, continuity of life, and ecosystems. Students were able to identify trees, catch crayfish and baby catfish with nets, maneuver through ropes courses, clear a clogged mountain stream, build shelters, observe skulls and pelts, observe insects and living organisms in their environment, and watch a slide show of loons. They were also able to participate in a classic evening bonfire which included skits and songs performed by the guides that involved participation by our students. At the end of the evening students were very tired and settled down amazingly well in their sleeping quarters.

In the morning we woke up to continue our fun and learning. We left the Maine Conservation School at 12:45 to head back to R.E.S. The trip was an amazing opportunity for the fourth grade class to participate in. Thank you again for the generosity and parent involvement of the Raymond Community.

Turn Tyson Products Into Big Bucks For The Raymond School System!

If you eat Tyson products, you can help the Raymond School System earn money! The Tyson program is called Project A+, and it works like this: There's a Project A+ label, worth 24¢, on various Tyson products that feature the Project A+ logo on the front of the package. Schools earn money from Tyson by collecting and redeeming the labels (similar to the General Mills program, Box Tops for Education). Participating schools can earn up to \$12,000 per academic year, and there are no restrictions on how the funds are used. The schools can use the money for anything they need — field trips, computer equipment, sports gear, library books — anything!

The Raymond PTA has set up collection sites at RES in front of the library and at JSMS in front of the office where parents and others in the community can drop off their Tyson Project A+ redemption labels. You can also drop off Tyson Project A+ redemption labels at the Raymond Village Library and the Raymond Town Office at the PTA bulletin boards. Our goal this year is to collect a total of 5000 labels, so that we can earn \$1,200 for our schools. For more information on the Tyson Project A+ program, contact Karyn Knights at 655-3926, or check out the Tyson Project A+ website, <http://ProjectAPlus.tyson.com>.

It's Time To Plan For Raymond's Future

Continued from page 1

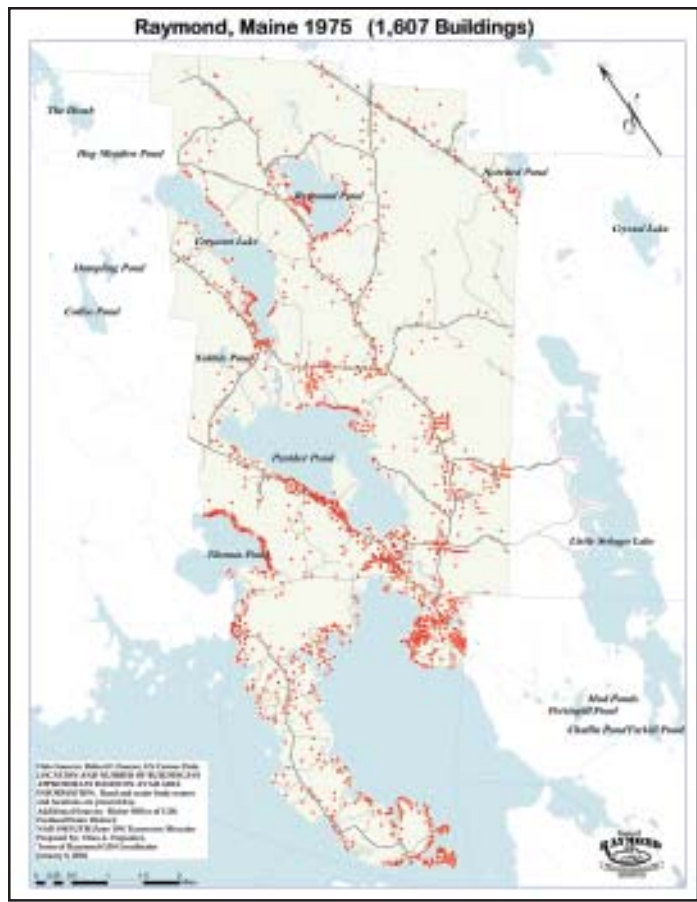


Figure 4

- ◆ create a differential growth cap, which would shift more of the new homes from the rural areas of Raymond to the more developed areas
- ◆ provide incentives for subdivision developers to create open space for wildlife habitat, to conserve traditional land uses such as forestry, and for recreation
- ◆ allow homeowners to create accessory apartments at existing residences to absorb some of the housing demand
- ◆ update ordinances to meet modern environmental and development standards

Any of these tools, or for that matter, any new or revised ordinance or zoning map must be approved by a town meeting. The selectmen will soon appoint a committee to begin this process, and the best way to stay abreast of what is happening is to attend meetings, visit the town website, and look for more information in future editions of the *Road Runner*.

Note: Due to the original size and content of the maps contained in this article, it is difficult to clearly represent them in newsprint. The maps are also available in the Comprehensive Plan and on the Raymond website at www.raymondmaine.org.

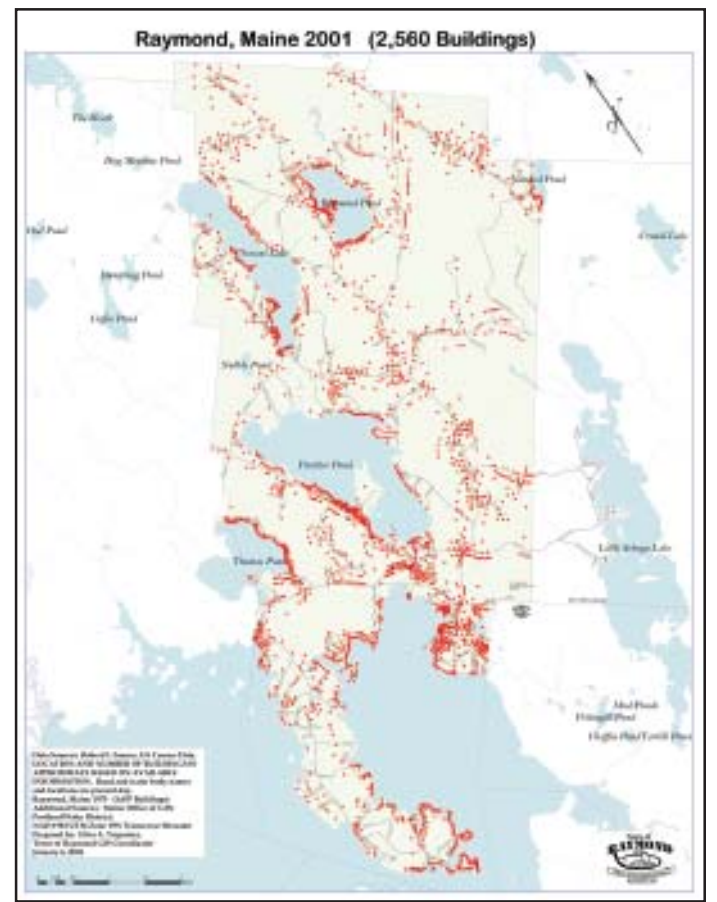


Figure 5

All of this is interesting history but it does not get to the most important point of the comprehensive plan, which is to plan for the future. The real challenge to the community is not to try to correct problems of the past but rather to accommodate a reasonable level of growth without forever losing the essence of what Raymond is.

Some of you folks were born and raised in Raymond and have stayed here all your lives. Others moved here from away or returned after living elsewhere. Regardless of the specifics, you all have your reasons for living in Raymond. They could be the rural atmosphere of much of the town, the ready access to lakes, quaint village areas with traditional homes, the checkerboard mix of farm fields and woods or a half-dozen other reasons. Whatever they are, if they are important to you, they are probably worth preserving for the future.

Is there a risk that these qualities of Raymond could be lost? Figure 6 provides a partial answer to that question and it requires you to accept only one assumption. Let us assume for a moment that the amount of growth the community experienced between 1975 and 2001 will be the same for the period 2001-2026. That is, 953 new dwellings will be added between 2001 and 2026. This is probably a reasonable assumption, since we have solid history to back it up and it actually translates into a slightly lower growth rate than we have experienced in the past.

If you accept this assumption, then the real challenge is to place these 953 "dots" on the map in a manner that will preserve the essence of the community – what makes Raymond "Raymond" – what makes it the place where you want to live.

It's been almost three years since this last map was created, and we projected 953 new residences in 2026. What has been our experience so far? Is the projection on track? Are we being overly concerned about the future?

In the past 33 months, the town has issued 140 building permits for single-family homes, which is ahead of our assumption. Perhaps of more concern is that, so far in 2004, the Planning Board has approved 32 new lots and conducted initial reviews of another 87 lots. In addition, town staff has met with developers considering 75 more lots. Now, not all of these 194 lots will be approved this year, and not all of them will have new homes in the next few years. But they do represent a ready inventory of developable lots and reinforce a clear trend for an even faster pace of development in the future.

The comprehensive plan recommends some tools for the Planning Board to consider in trying to determine the amount and impact of future growth in Raymond. They include:

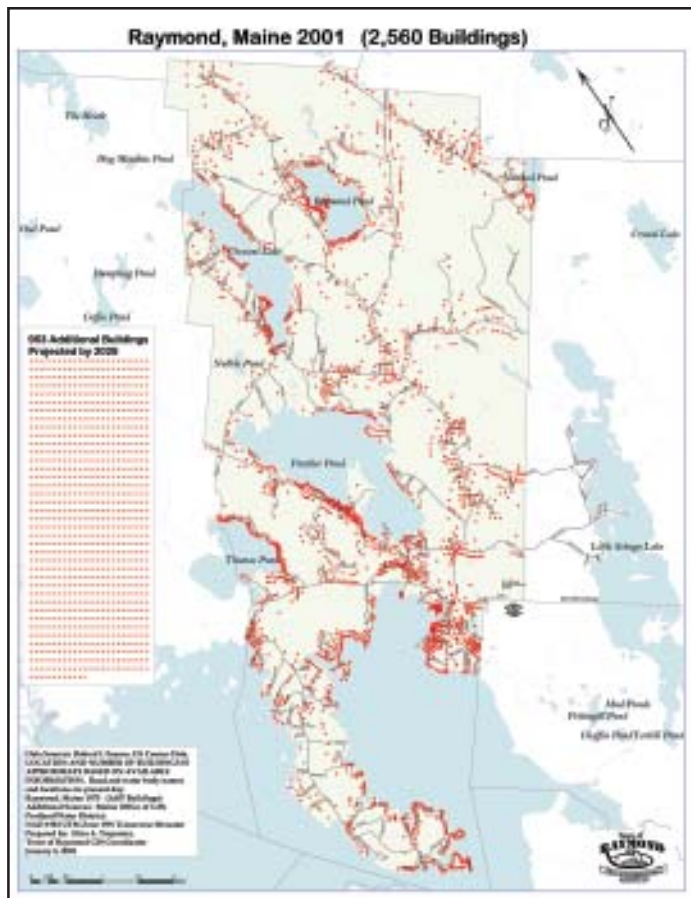


Figure 6

Scouts To Collect Food And Flags

The annual Scouting for Food drive will be held on Saturday November 6th. The food collected is used to help the Raymond Food Pantry. This year's event will have a twist. Scouts will also be collecting worn United States flags for the purpose of a proper flag retirement ceremony. Scouts will be canvassing neighborhoods on Saturday morning. If no one visits your area, you may drop off flags and/or food at Kokatosi Campground between 2-4pm. A flag collection receptacle will also be located at Raymond Village Community Church from Sunday, November 7, through Tuesday, Nov 9.

Weather permitting, a flag retiring ceremony will occur on Veterans Day, November 11th, at 3 pm at Sheri Gagnon field.

New Gloucester Firefighter Fights for New Lungs

A series of fundraising efforts has begun for a local New Gloucester firefighter to help support his badly needed double lung transplant. George Carman, 38, New Gloucester resident and volunteer firefighter, was diagnosed with Cystic Fibrosis (CF), when he was born. CF is a genetic disease affecting approximately 30,000 children and adults in the United States. A defective gene causes the body to produce abnormally thick mucus that clogs the lungs and leads to life-threatening lung infections. These sticky secretions also obstruct the pancreas, preventing digestive enzymes from reaching the intestines to help break down and absorb food.

George has been a volunteer firefighter for 14 years; four years in Yarmouth, and ten years in New Gloucester. He also has been very active on the New Gloucester Community Fair Committee, helping to make the fair a reality. George lives with his wife of twelve years, Amy Carman, and their five year old daughter Annie.

George is currently on a donor list to receive two new lungs. An organization has been formed consisting of friends and family to move forward with fundraisers to help support George, his family and donor's expenses during his transplant operation. The organization is called "Lungs for George." George has a needed goal of \$300,000. This amount does not include the actual operation. George has been in contact with other people that have had lung transplants, and they have talked with him about what he may need.

Please help support "Lungs for George" at a Benefit Dance on November 19, 2004, at Spring Meadows Golf and Country Club, Route 100, in Gray. We will share a night with George, his family, and enjoy plenty of dancing. There will be a cash bar and raffle prizes. Tickets are limited and must be reserved in advance, \$15/ single and \$25/couple. Music will be supplied by Happy Feet Productions.

For More information on tickets, or how you can help "Lungs for George," call Mary at 926-4026, Amy at 926-5071 or New Gloucester Fire/Rescue at 926-4142.

Senior Citizens Dinner

Once again Jordan-Small Middle School will host a senior citizens dinner on Wednesday, November 17th, at 5:30pm. Advance reservations are a very important part in planning the meal. Please call JSMS #655-4743 a few days ahead to reserve your seat and to hear a preview of the evening's menu. A \$2 donation per meal is greatly appreciated.

It is our pleasure to provide this event. Join us and invite a friend!