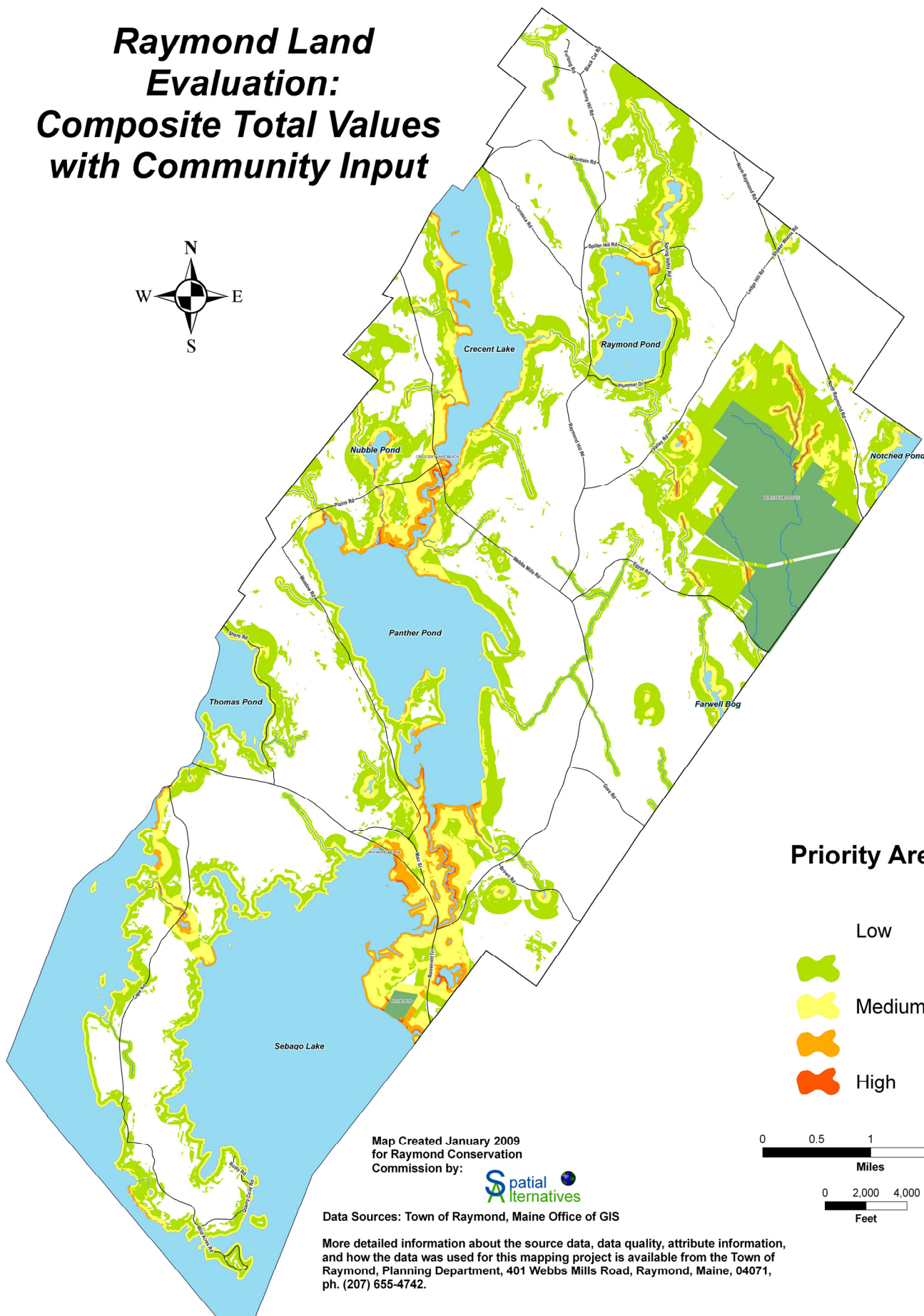
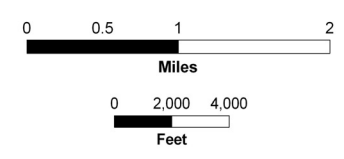
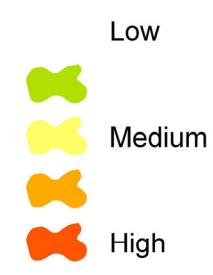


# Raymond Land Evaluation: Composite Total Values with Community Input



## Priority Areas



Map Created January 2009  
for Raymond Conservation  
Commission by:



Data Sources: Town of Raymond, Maine Office of GIS

More detailed information about the source data, data quality, attribute information, and how the data was used for this mapping project is available from the Town of Raymond, Planning Department, 401 Webbs Mills Road, Raymond, Maine, 04071, ph. (207) 655-4742.