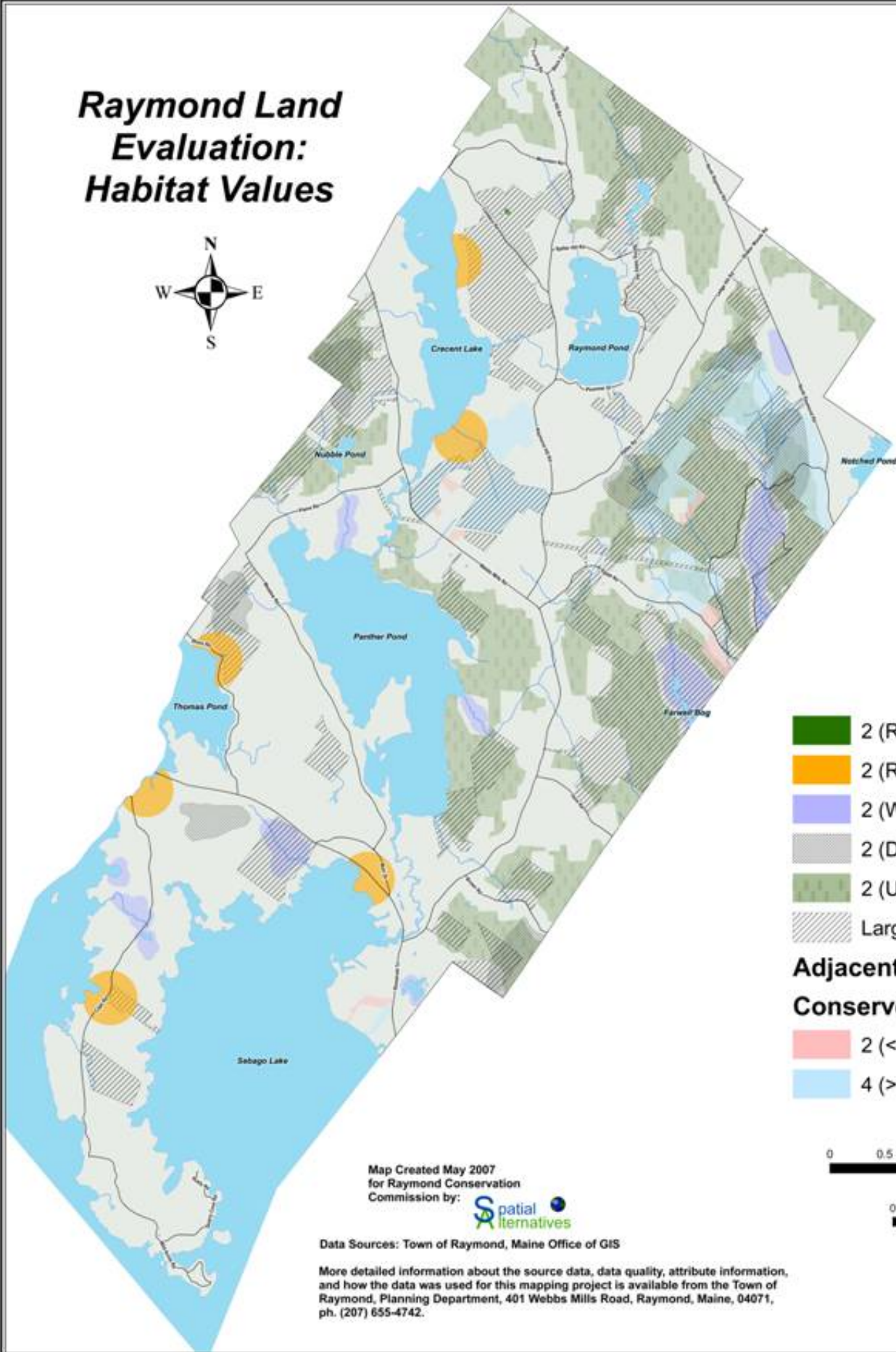


Raymond Land Evaluation: Habitat Values



- 2 (Rare Plant)
- 2 (Rare Animal)
- 2 (Waterfowl Habitat)
- 2 (Deer Wintering Area)
- 2 (Unfragmented Forest)
- Large Undeveloped Lots
- Adjacent to Conserved Land**
- 2 (< 10Ac)
- 4 (> 10Ac)

Map Created May 2007
for Raymond Conservation
Commission by:



Data Sources: Town of Raymond, Maine Office of GIS

More detailed information about the source data, data quality, attribute information, and how the data was used for this mapping project is available from the Town of Raymond, Planning Department, 401 Webbs Mills Road, Raymond, Maine, 04071, ph. (207) 655-4742.

