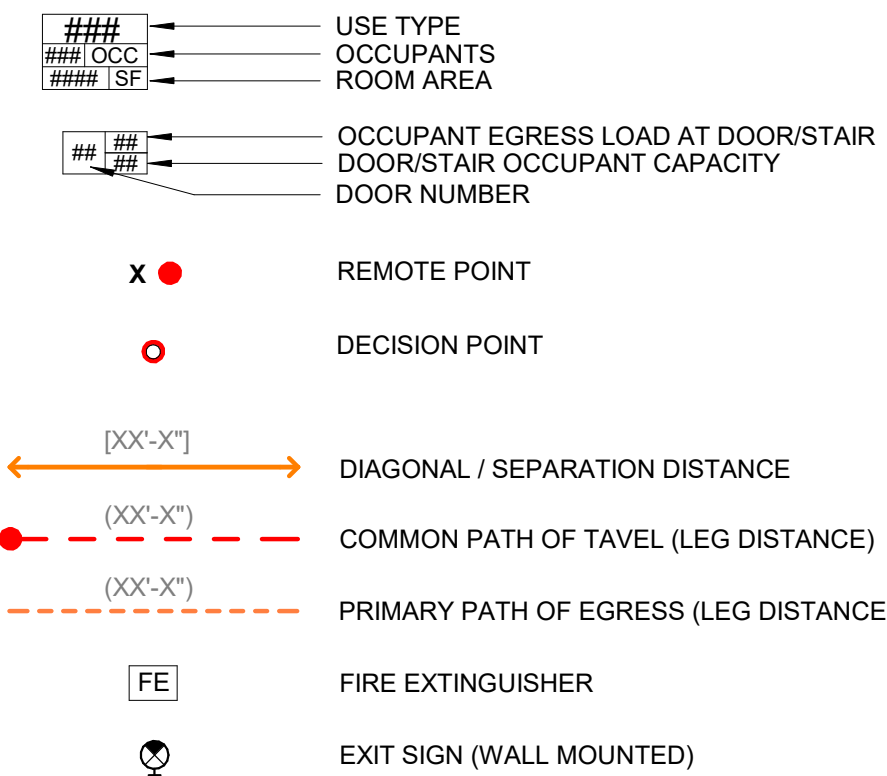


G001

- LIFE SAFETY NOTES:**
- THESE LIFE SAFETY PLANS ARE MEANT TO SHOW CONFORMANCE WITH THE REGULATIONS EXISTING AT THE TIME OF CONSTRUCTION, OR AS INDICATED IN THE CODE SUMMARY NOTES. THESE DOCUMENTS ARE A COMPILATION OF EXISTING CONSTRUCTION DOCUMENTS, EXISTING CONDITIONS AS OBSERVED IN THE FIELD, AND CURRENT PROGRAMMATIC USE STATEMENTS. AN AS-BUILT SURVEY WAS NOT CONDUCTED FOR THE COMPLETION OF THESE DRAWINGS; SOME CONDITIONS MAY DIFFER FROM THOSE SHOWN.
 - SEE G110 FOR PARTITION TYPES
 - SEE ENLARGED PLANS AND INTERIOR ELEVATIONS FOR MOUNTING HEIGHTS OF F.A. DEVICES AND LIFE SAFETY SYSTEMS.
 - WHERE THERE ARE DISCREPANCIES BETWEEN IBC AND NFPA, THE MOST RESTRICTIVE SHALL BE USED.

LIFE SAFETY PLAN LEGEND:



OCCUPANCY CLASSIFICATION

ASSEMBLY
KITCHEN
STORAGE

OCCUPANT LOAD CALCULATIONS
IBC TABLE 1004.1.2

OCC.	USE	NET OR GROSS	AREA	LOAD FACTOR	LOAD
A-2	KITCHEN	GROSS	1038	200 SQF /PERSON	6
A-2	DINING HALL	NET	3021	15 SQF /PERSON	202
A-2	COVERED PORCH	NET	339	7 SQF /PERSON	49
S-1	FOOD STORAGE	GROSS	675	300 SQF /PERSON	3
					260

EGRESS CAPACITY (DOORS)
IBC 1005.5.3.2

DOOR	LOAD	WIDTH	CAPACITY FACTOR	CALC.
109	69	68"	.2	340
110	69	68"	.2	340
103A	5	68"	.2	340
101C	69	34"	.2	170
TOTAL	212			1,190

TRAVEL DISTANCE
NFPA TABLE A.7.6

STARTING POINT	EGRESS POINT	COMMON PATH		TOTAL DISTANCE	
		ALLOWED*	PROVIDED	ALLOWED*	PROVIDED
F	B	75'-0"	6'-4"	200'-0"	66'-0"
F	C	20'-0"	6'-4"	200'-0"	31'-0"
E	D	50'-0"	25'-3"	200'-0"	64'-7"
E	C	50'-0"	25'-3"	200'-0"	104'-5"

OCCUPANT LOAD CALCULATIONS
NFPA 101: TABLE 7.3.1.2 OCCUPANT LOAD FACTOR

OCC.	USE	NET OR GROSS	AREA	LOAD FACTOR	LOAD
ASSEMBLY	KITCHEN	GROSS	1038	100 SQF /PERSON	11
ASSEMBLY	DINING HALL	NET	3021	15 SQF /PERSON	202
ASSEMBLY	COVERED PORCH	NET	339	7 SQF /PERSON	49
STORAGE	FOOD STORAGE	GROSS	675	500 SQF /PERSON	2
					264

EGRESS CAPACITY (DOORS)

OCC BY NFPA 1 7.3.1.2 / EGRESS WIDTH BY IBC 1005.3.2

DOOR	LOAD	WIDTH	CAPACITY FACTOR	CALC.
109	70	68"	.2	340
110	70	68"	.2	340
103A	7	68"	.2	340
101C	70	34"	.2	170
TOTAL	217			1,190

TRAVEL DISTANCE
IBC TABLE 1006.2.1

		COMMON PATH		TOTAL DISTANCE
		ALLOWED	PROVIDED	
F	B	100'	6'-4"	66'-0"
F	C	75'-0"	6'-4"	31'-0"
E	D	75'-0"	4'-6"	33'-6"
E	C	100'-0"	17'-6"	24'-1"

BUILDING INFORMATION:

Address: 85 PLAINS RD. RAYMOND, ME 04071
Zoning: LRR1
Parcel ID: Map 9 / Lot 19

Type of Construction: VB (Unprotected Combustible Construction)
Occupancy Type: A-2 Dining Facilities (IBC 303.3) Existing Assembly (NFPA 13.1)

Bldg Area, Pre-Renovation: 3450 sqft
Area of New Construction: 2395 sqft
Bldg Area, Post-Renovation: 4993 sqft
(6,000 sf allowable for A-2 Type VB, Non-sprinklered per IBC 506.2)

Seasonal Dwelling : Chapter 1 - Maine Uniform Building and Anergy Code - Administrative Procedures
Definitions : 13. Seasonal Dwelling
Conformance with IECC is not required.
- Occupied less than 180 days a calendar year
- No central heating system installed
- No heating appliance with fuel supply capable of heating for 24 hours
- Water supply limited to <180 days of use per calendar year.

Building Height: 1 Story (1 Story Allowable per IBC 504.4 & NFPA 13.1.6 <1000 occupants)

CODE SUMMARY:

APPLICABLE CODES
Raymond's Adopted Code / MUBEC:
2015 International Building Code (IBC)

Fire/ Life Safety
NFPA Life Safety Code as adopted by the State of Maine
Including but not limited to:
NFPA 1 2018
NFPA 101 2018: Life Safety Code
Accessibility
2010 ADA Standards for Accessible Design
Fire Protection Ordinance
NOTE: All Codes shall include changes/amendments by the State of Maine

OCCUPANCY CLASSIFICATION AND LOAD

IBC 302
Assembly A-2 Less concentrated w/out fixed seats
Assembly A-2 Kitchen associated with dining facility
Storage S-1 [Accessory Occupancy <10% of building area]

NFPA 7.3.1.2
Assembly Less concentrated w/out fixed seats
Assembly Kitchen
Storage Other than storage and mercantile

AUTOMATIC SUPPRESSION SYSTEM
None Provided

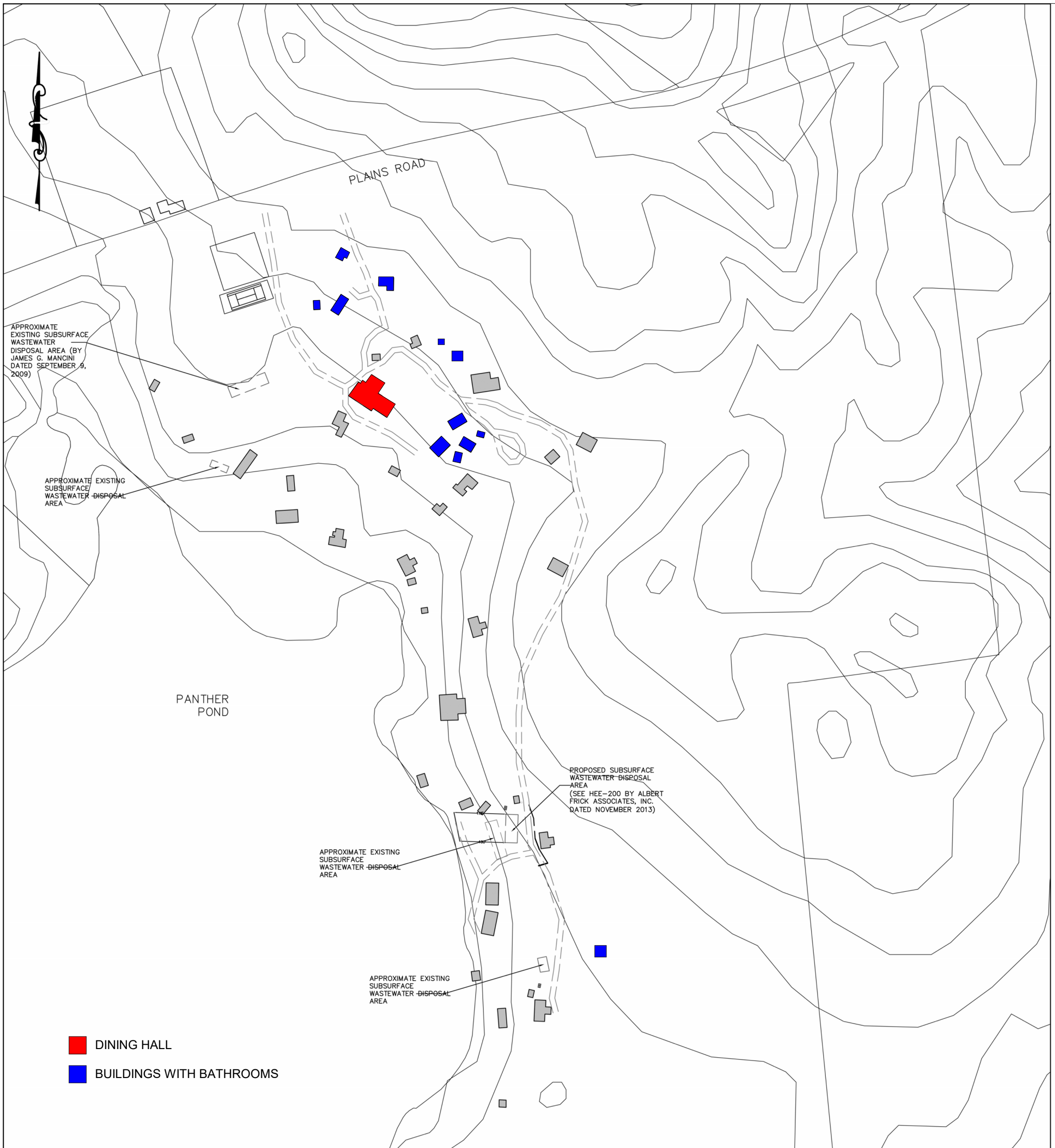
EXIT ACCESS*
Allowed Common Path
IBC 1006.2.1
A 75' (OL > 30)
S-1 100' (OL ≤ 30)
Allowed Common Path / Allowed Max travel distance
NFPA 101, Table A.7.6
Assembly 20' (OL < 50) / 200'
Storage 50' / 200'

Dead-End Corridor
NFPA 101 Table A.7.6
Assembly 20'
Storage 50'

IBC 1004.1.2
15 net
200 gross
300 gross
NFPA 7.3.1.2
15 net
100 gross
500 gross

PLUMBING COUNT

No restrooms are currently provided within the existing dining hall. The current campers and staff use the existing restrooms on campus highlighted in blue on the plan below. Due to site constraints and complexity of tying an additional restroom into the current septic system, no restroom is proposed in the replacement of the kitchen as part of this scope of work.

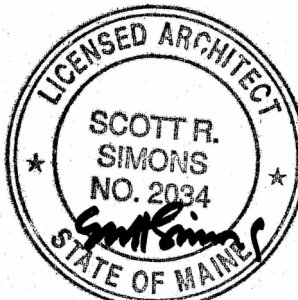


5 CAMPUS MAP
1" = 160'-0"

PROJECT NAME:
**CAMP TIMANOUS
DINING HALL**

85 PLAINS RD.
RAYMOND, ME 04071

SEAL:



THIS DRAWING IS THE PROPERTY OF
SIMONS ARCHITECTS (SA) AND IS NOT
TO BE COPIED OR REPRODUCED IN
PART OR WHOLE.
2024 © SIMONS ARCHITECTS, LLC

ISSUANCES

ISSUE FOR CONST. 03/01/2024

DATE OF ISSUE: 03/01/2024
PROJECT NUMBER: 2023-0050
STATUS: ISSUED FOR CONSTRUCTION

**LIFE SAFETY
PLAN + CODE
SUMMARY**

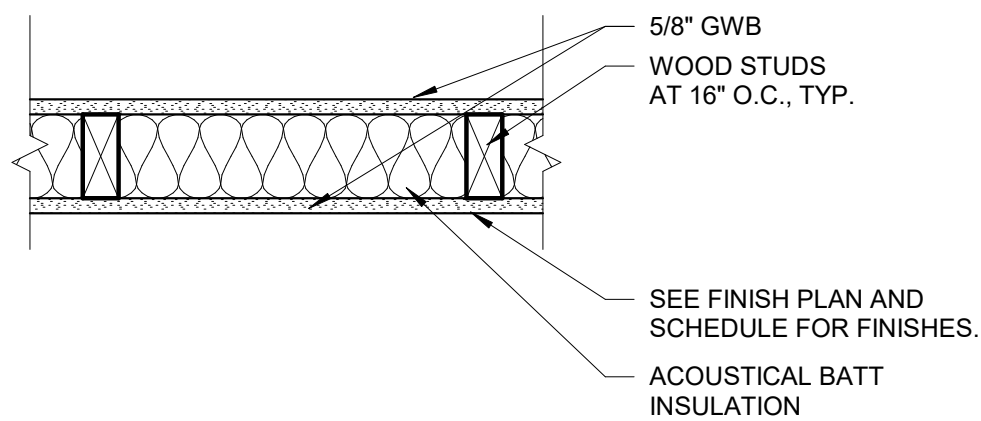
G101



75 York Street
Portland, Maine 04101
simonsarchitects.com
207.772.4656

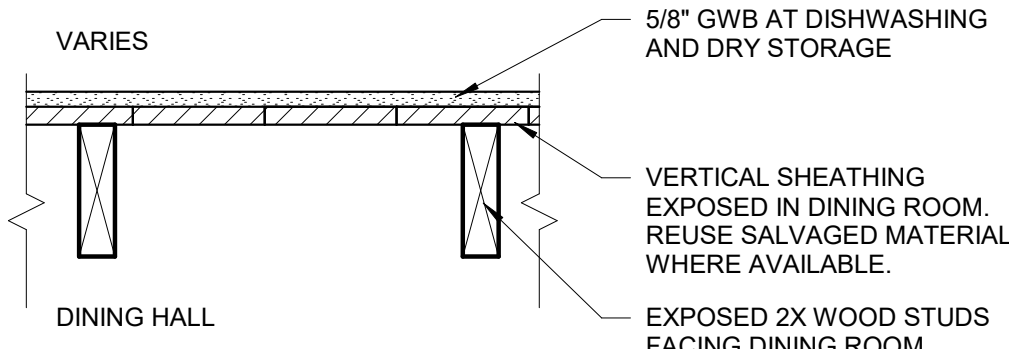
PARTITION TYPES :

A4 = 4" STUD FRAMING



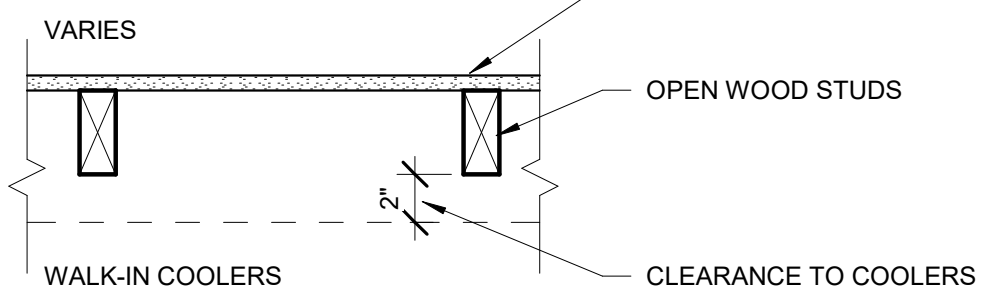
A PARTITION - A
1 1/2" = 1'-0"

B6 = 6" STUD FRAMING



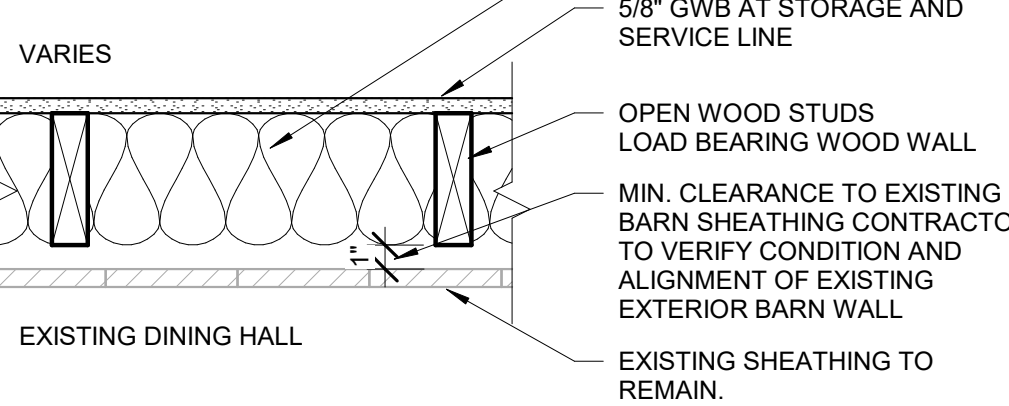
B PARTITION - B
1 1/2" = 1'-0"

C4 = 4" STUD FRAMING



C PARTITION - C
1 1/2" = 1'-0"

D6 = 6" STUD FRAMING



D PARTITION - D
1 1/2" = 1'-0"

TYPICAL MOUNTING DIAGRAMS :

NOTES:

- CONTRACTOR TO COORDINATE LOCATION OF STUDS IN PARTITION TO ACHIEVE INTENT. PROVIDE ADDITIONAL STUDS/BRACING AS NEEDED. PROVIDE SOUNDLINERS AT DEVICE BACK BOXES WHERE DEVICES ARE LOCATED IN PARTITIONS WITH INSULATION.
- DIMENSIONS ARE TO CENTER LINE OF DEVICES. TYP. FIRE STROBE DIMENSION IS TO THE BOTTOM OF THE DEVICE.
- TOP OF ACCESSIBLE DEVICES NOT TO EXCEED 48" AFF.
- BOTTOM OF ACCESSIBLE DEVICES TO BE NO LOWER THAN 18".
- ALL DEVICES WITHIN 6'-0" OF ANOTHER TO BE ALIGNED PER THE DIAGRAMS ON THIS PAGE.

POWER OUTLET
MOUNT HORIZONTALLY

DEVICE LOCATIONS at MILLWORK COUNTERS

TELEPHONE OUTLET
MTD HORIZONTALLY

POWER OUTLET
MTD HORIZONTALLY

CREDENZA OR COUNTER

DEVICE LOCATIONS at CREDENZAS or COUNTERS

TYP. DOOR RETURN AT PERPENDICULAR WALLS

STROBE WHERE OCCURS

EQ EQ

SWITCHES AND DIMMERS

T-STAT WHERE OCCURS

POWER OUTLET
WHERE OCCURS

DEVICE LOCATIONS at COLUMNS, BETWEEN DOORS, ETC.

PROVIDE GROMMET AT OUTLETS

WORK TOP

POWER AND DATA
MOUNT HORIZONTALLY

DEVICE LOCATIONS at WORK SURFACES

TYP. BACK TO BACK DEVICES (AT SAME HEIGHT)
(COORDINATE WITH SPECIFIC PLAN & ELEVATION)

STROBE WHERE OCCURS

SWITCH(ES) OR DIMMER(S)
GANG UNDER ONE PLATE

T-STAT WHERE OCCURS

OUTLET WHERE OCCURS

ADDITIONAL OUTLET
WHERE OCCURS

DEVICE LOCATIONS at CORNERS

STROBE WHERE OCCURS

SWITCH(ES) OR DIMMER(S)
GANG UNDER ONE PLATE

T-STAT, FIRE ALARM
PULL, DOOR RELEASE,
OR OTHER WHERE
OCCURS

OUTLET WHERE OCCURS

DEVICE LOCATIONS at DOOR JAMBS

TYP DEVICE LOCATION WITH WALL MTD EXIT SIGNS

EXIT SIGN

STROBE WHERE OCCURS

OUTLET WHERE OCCURS

LOCATIONS at FIRE EXTINGUISHER CABINET
STROBES and FIRE ALARM PULLS

STROBE WHERE OCCURS

FIRE ALARM PULL

FIRE EXTINGUISHER CABINET

DOOR IN OPEN POSITION

STROBE WHERE OCCURS

T-STAT WHERE OCCURS

SWITCHES & DIMMERS

DEVICE LOCATIONS at OPEN DOORS

SCHEDULED SIGN

LOREM IPSUM

60" TO HIGHEST TACTILE
CHARACTER BASELINE

48" TO LOWEST
TACTILE CHARACTER
BASELINE

LOCATION FOR TYPICAL SIGNS

simons architects
designed for human potential

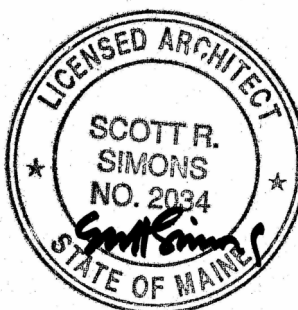
75 York Street
Portland, Maine 04101
simonsarchitects.com
207.772.4656

PROJECT NAME:

CAMP TIMANOUS
DINING HALL

85 PLAINS RD,
RAYMOND, ME 04071

SEAL:



THIS DRAWING IS THE PROPERTY OF
SIMONS ARCHITECTS (SA) AND IS NOT
TO BE COPIED OR REPRODUCED IN
PART OR WHOLE.
2024 © SIMONS ARCHITECTS, LLC

ISSUANCES

ISSUE FOR CONST. 03/01/2024

DATE OF ISSUE: 03/01/2024

PROJECT NUMBER: 2023-0050

STATUS: ISSUED FOR CONSTRUCTION

PARTITION
TYPES & TYP.
MOUNTING

G110

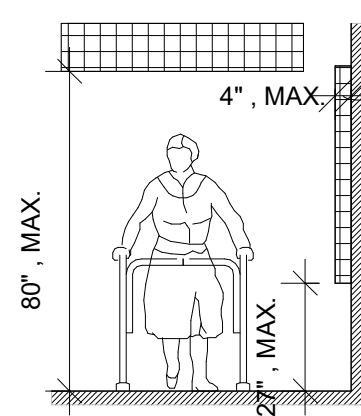


FIG. 307.2 -
LIMITS OF PROTRUDING
OBJECTS

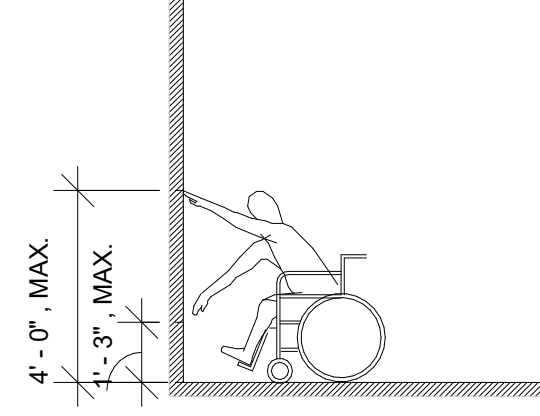


FIG. 308.2.1 -
UNOBSTRUCTED
FORWARD REACH

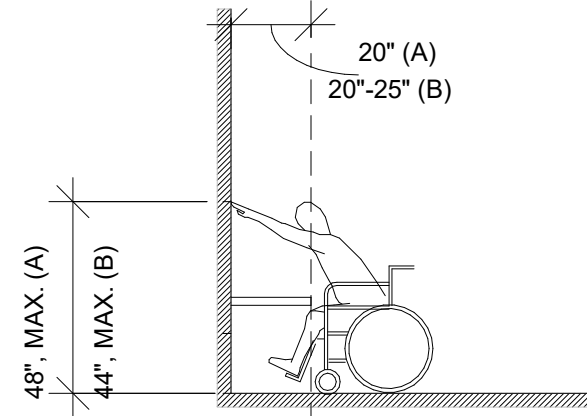


FIG. 308.2.2 -
OBSTRUCTED HIGH
FORWARD REACH

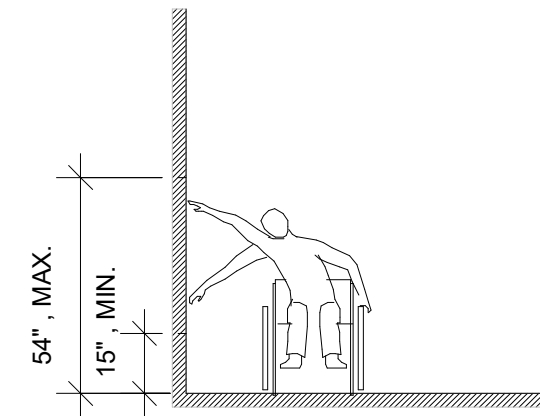


FIG. 308.3.1 -
UNOBSTRUCTED SIDE
REACH

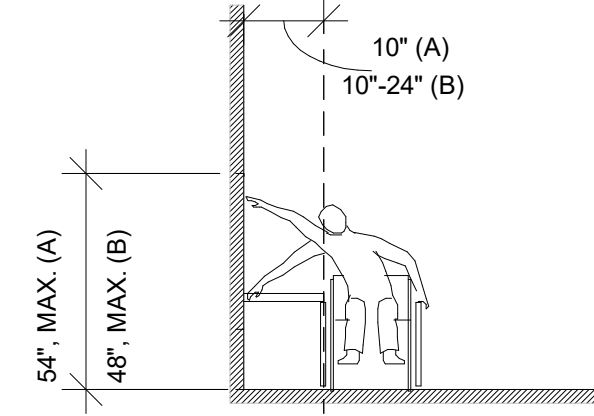
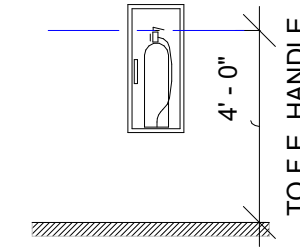


FIG. 308.3.2 -
OBSTRUCTED SIDE
REACH



FIRE EXTINGUISHING
CABINET MOUNTING
HEIGHT

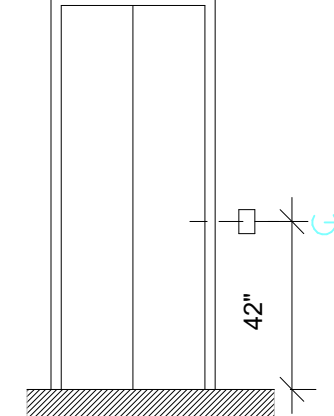


FIG. 407.2.2
ELEV. CALL BUTTONS

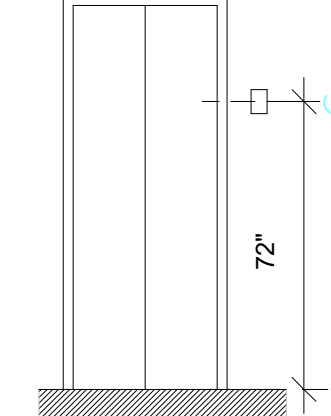


FIG. 407.2.3.1
HEIGHT OF ELEV.
VISIBLE SIGNALS

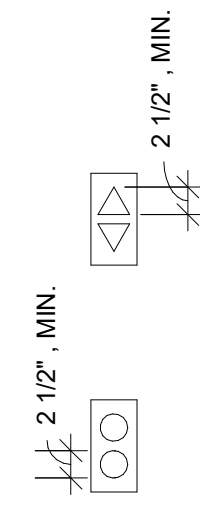


FIG. 407.2.3.2.2
SIZE OF ELEV. VISIBLE
SIGNALS

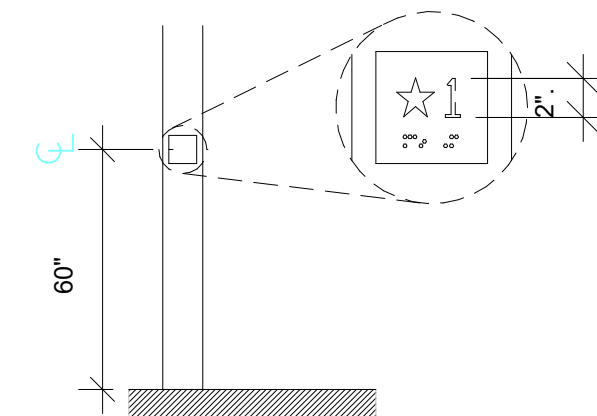


FIG. 407.2.4
TACTILE CHARACTERS ON
ELEV. HOISTWAY ENTRANCES

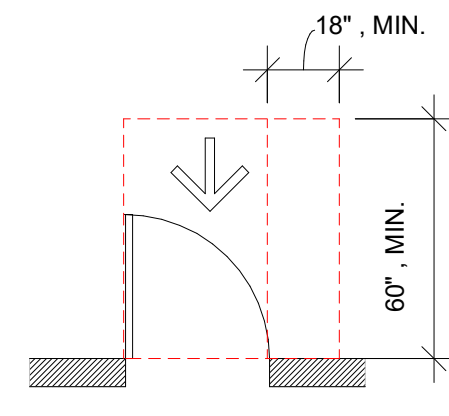
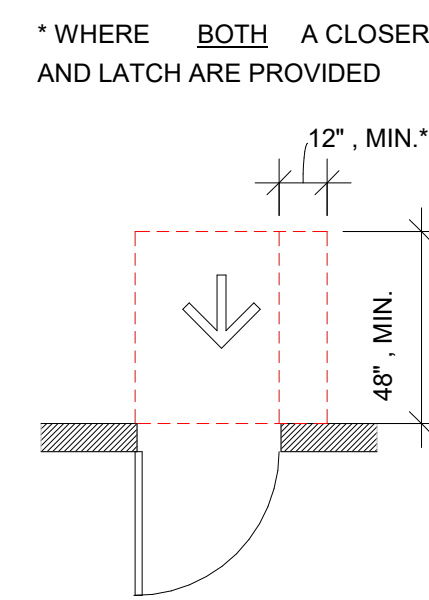
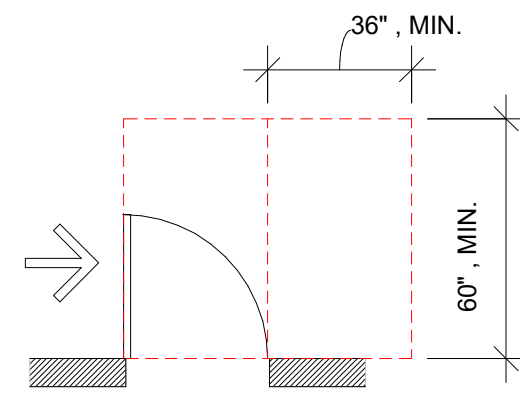


FIG. 404.2.41 -
MANEUVERING CLEARANCE
AT SWING DOOR

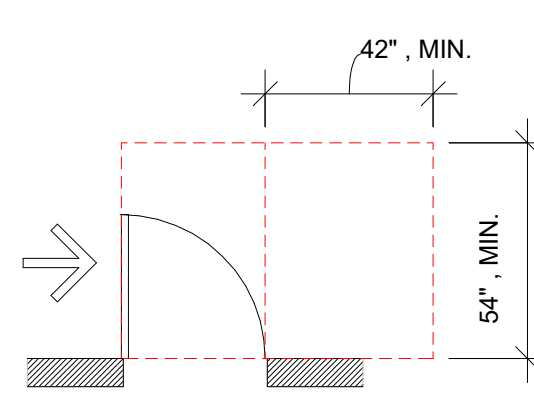
(A) FRONT APPROACH,
PULL SIDE



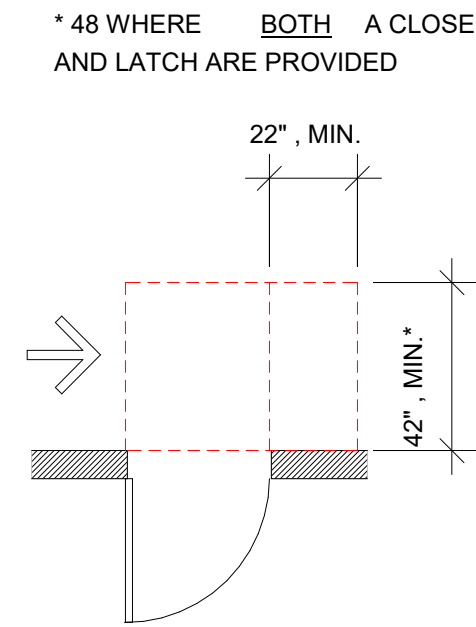
(B) FRONT APPROACH,
PUSH SIDE



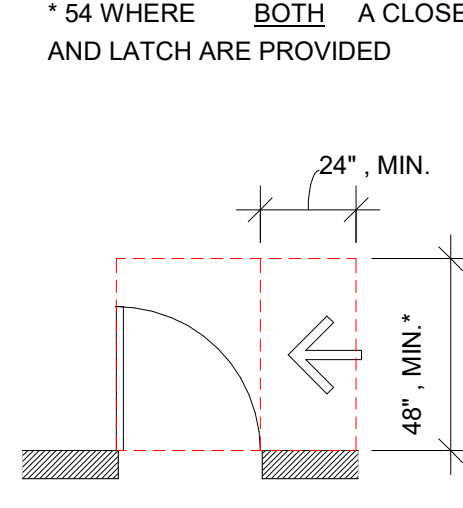
(C) HINGE APPROACH,
PULL SIDE



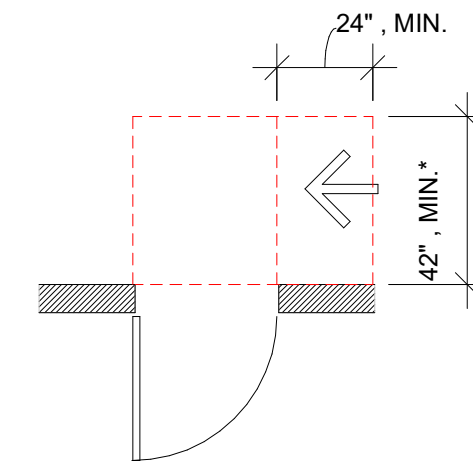
(D) HINGE APPROACH,
PULL SIDE



(E) HINGE APPROACH,
PULL SIDE



(F) LATCH APPROACH,
PULL SIDE



(G) LATCH APPROACH,
PUSH SIDE

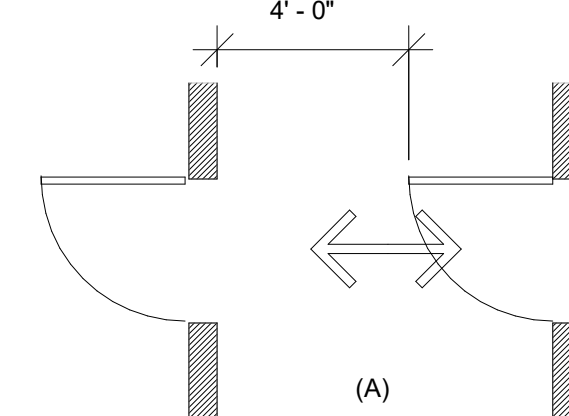


FIG. 404.2.6
TWO DOORS IN A SERIES
(A) AND (B)

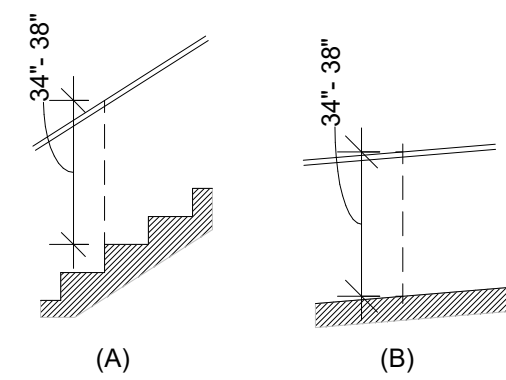


FIG. 505.4.

HANDRAIL HEIGHT
(A) STAIRS
(B) RAMPS

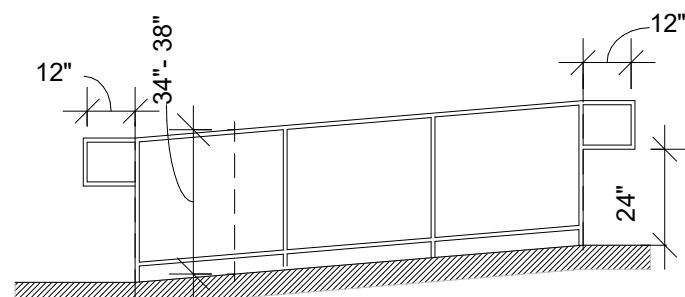


FIG. 505.10.1
TOP AND BOTTOM HANDRAIL
EXTENSIONS AT RAMPS

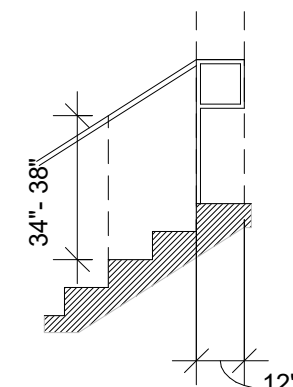


FIG. 505.10.2
TOP HANDRAIL
EXTENSION AT
STAIRS

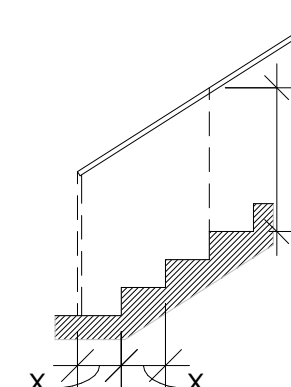


FIG. 505.10.3
TOP HANDRAIL
EXTENSION AT
STAIRS

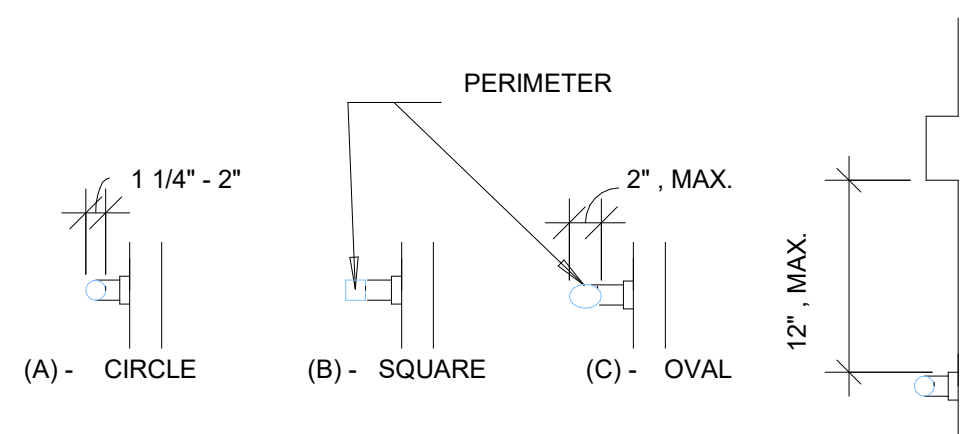


FIG. 609.2
SIZE OF GRAB BARS
(A) CIRCULAR
(B) AND (C) NON CIRCULAR

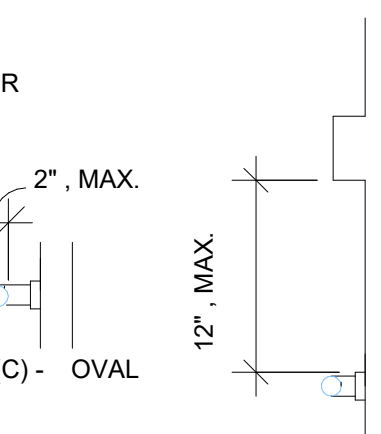


FIG. 609.3
SPACING OF
GRAB BARS

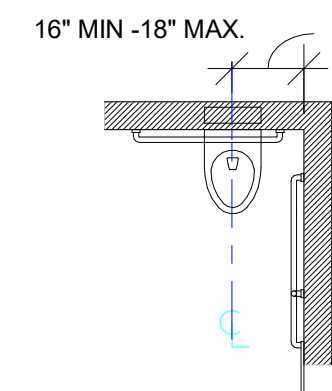


FIG. 604.2

WATER CLOSET LOCATION

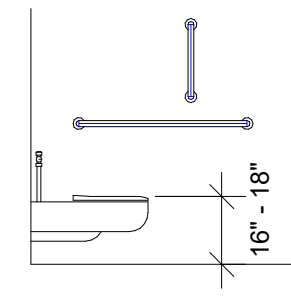


FIG. 604.4

HEIGHT TO TOP OF SEAT

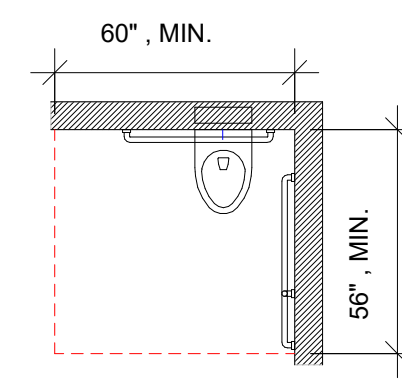


FIG. 604.3.1

SIZE OF CLEARANCE FOR WATER
CLOSET

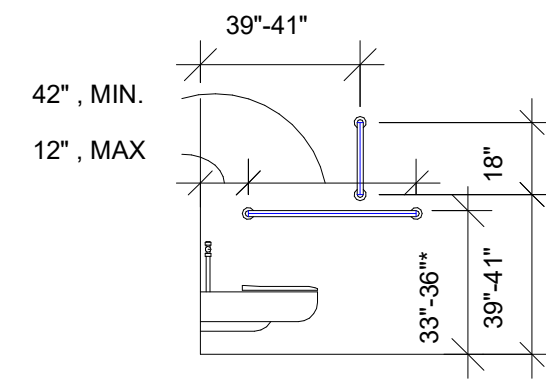


FIG. 604.5.1

SIDE WALL GRAB BAR
FOR WATER CLOSET

* TO TOP OF GRAB BAR

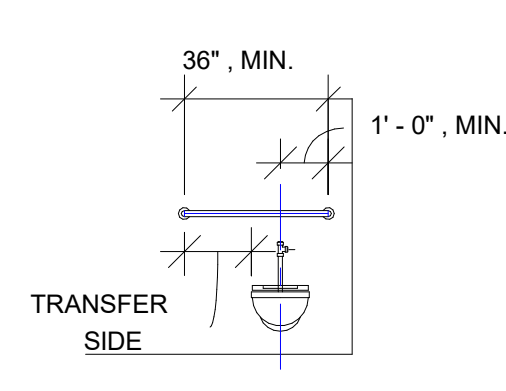


FIG. 604.5.2

REAR WALL GRAB BAR
FOR WATER CLOSET

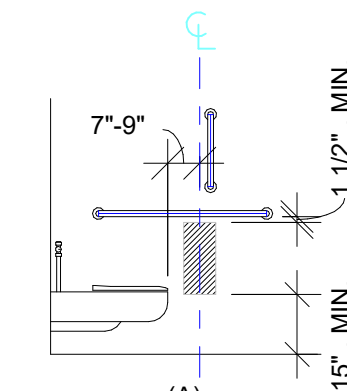
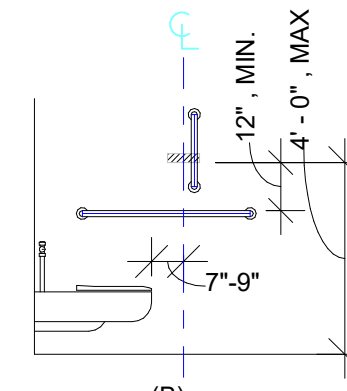
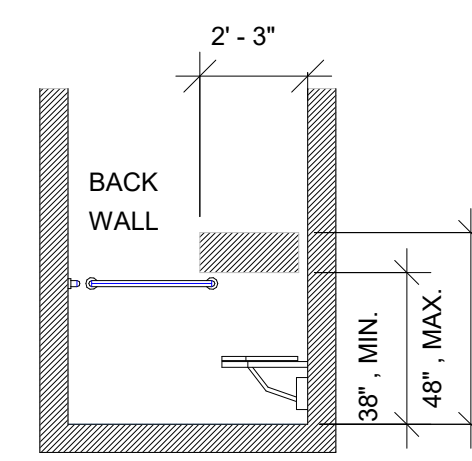


FIG. 604.7

DISPENSER LOCATION
(A) BELOW GRAB BAR
(B) ABOVE GRAB BAR



(B)



(B)
WITH SEAT
FIG. 608.3.5

CONTROLS IN
TRANSFER-TYPE
SHOWERS

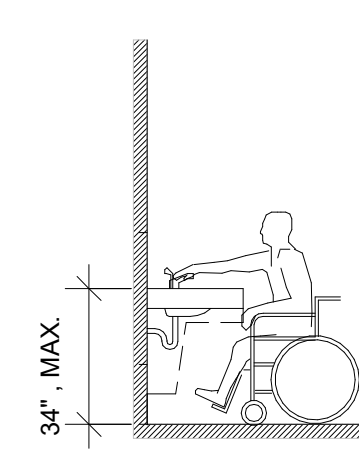


FIG. 606.3 -
HEIGHT OF LAVATORIES
AND SINKS

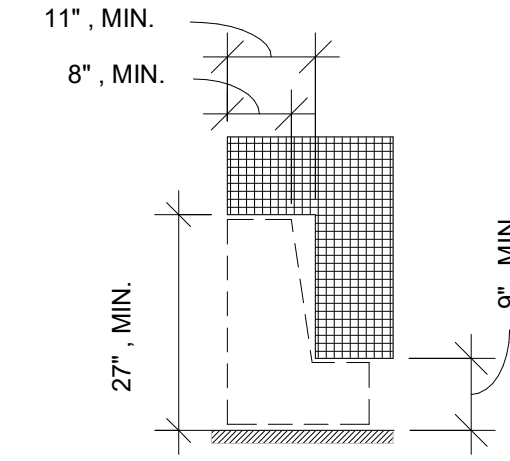


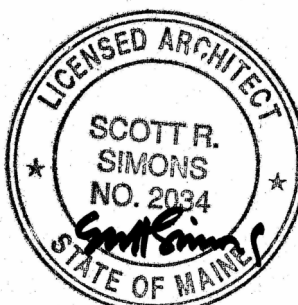
FIG. 306.3 -
KNEE CLEARANCE

PROJECT NAME:

CAMP TIMANOUS DINING HALL

85 PLAINS RD,
RAYMOND, ME 04071

SEAL:



THIS DRAWING IS THE PROPERTY OF
SIMONS ARCHITECTS (SA) AND IS NOT
TO BE COPIED OR REPRODUCED IN
PART OR WHOLE.
2024 © SIMONS ARCHITECTS, LLC

ISSUANCES

ISSUE FOR CONST. 03/01/2024

DATE OF ISSUE: 03/01/2024

PROJECT NUMBER: 2023-0050

STATUS: ISSUED FOR
CONSTRUCTION

ACCESSIBILITY DIAGRAMS