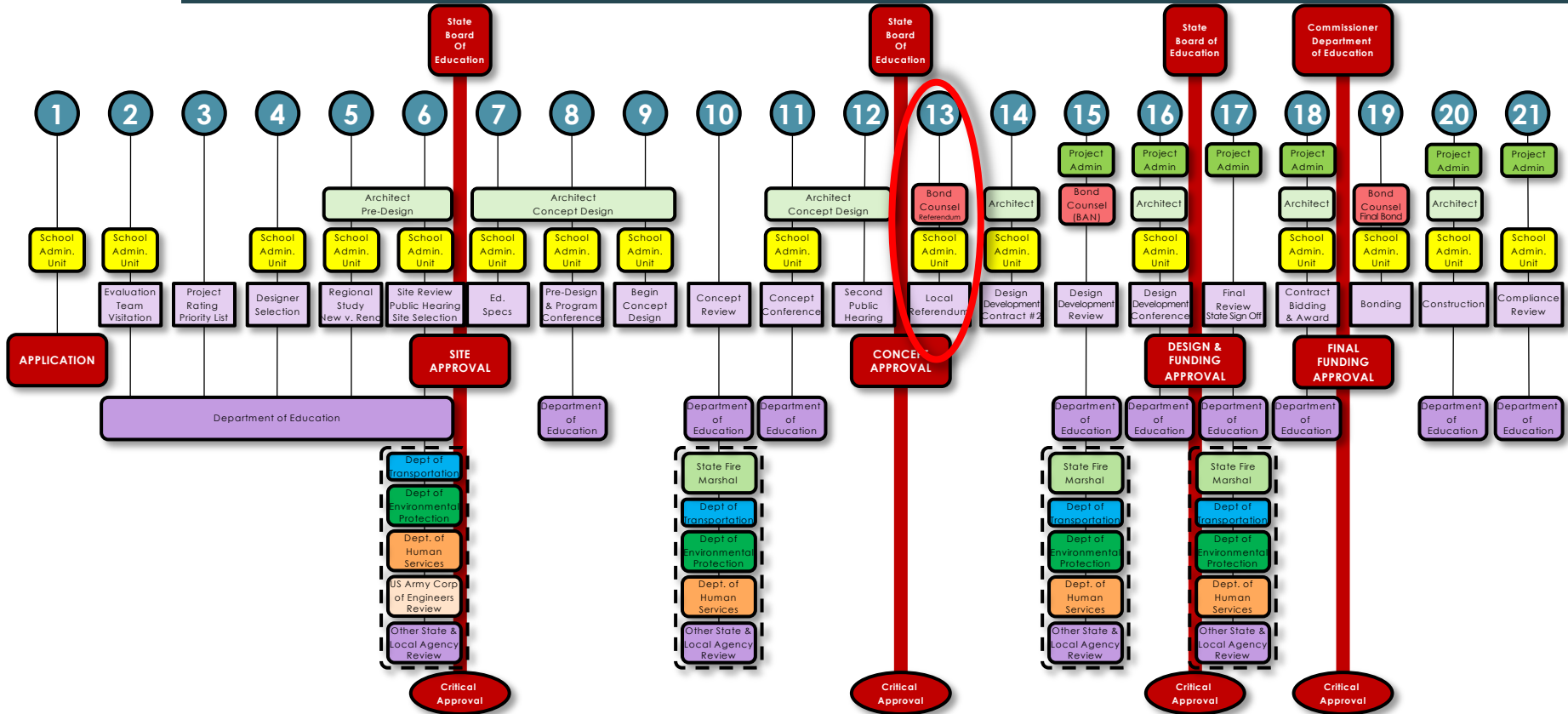




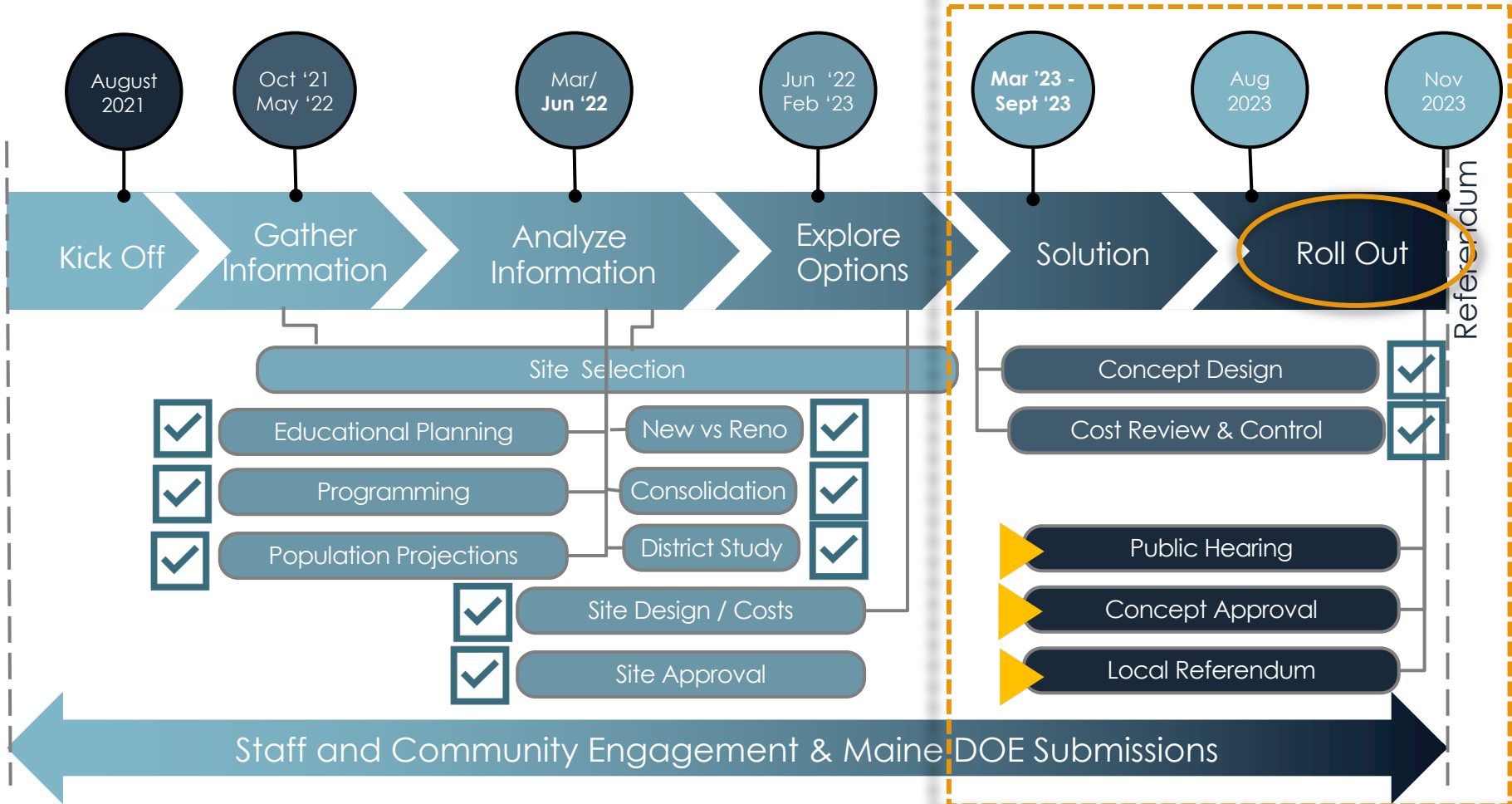
RAYMOND SELECT BOARD UPDATE

RSU-14 Middle School

"SIMPLE" 21 STEP STATE BUILDING AID PROCESS



UPDATED TIMELINE & MILESTONES



ABOUT OUR NEW MIDDLE SCHOOL PROJECT



CURRENT FACILITIES ARE INADEQUATE

- LOTS OF BUILDING ISSUES
- UNDERSIZED EDUCATION AREAS
- POOR ORGANIZATION
- MISSING SPACES



ONCE IN A LIFETIME OPPORTUNITY

- LEVERAGES STATE FUNDING
- IMPROVES EDUCATIONAL OUTCOMES
- OFFERS COMMUNITY ASSETS
- LOWERS LONG TERM COSTS (ENERGY, MAINTENANCE, ETC)
- FREES UP SPACE AT ALL ELEMENTARY SCHOOLS AND ALLOWS FOR EXPANDED PRE-K OPPORTUNITIES



WINDHAM AND RAYMOND HAVE A UNIFIED EDUCATIONAL VISION

- PROGRAM EQUITY AND OPPORTUNITY



DOE APPROVED SITE CONCEPTUAL DESIGN

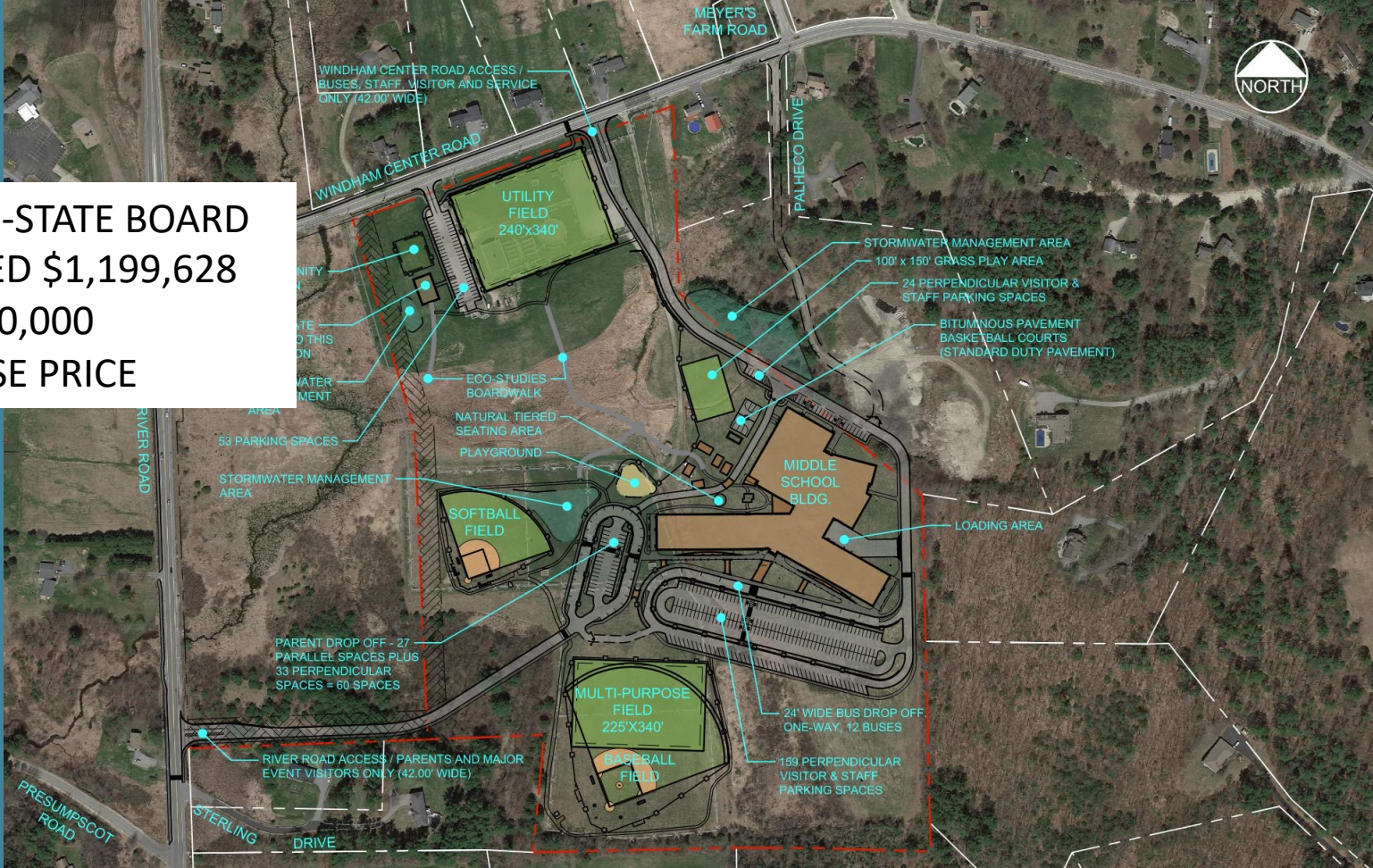
LAVALLEE
BRENSINGER
ARCHITECTS

Windham Raymond Schools
RSU4



Stantec

JULY 12 -STATE BOARD
APPROVED \$1,199,628
OF \$1,500,000
PURCHASE PRICE









R S U M A

VISITORS

WELCOME STUDENTS



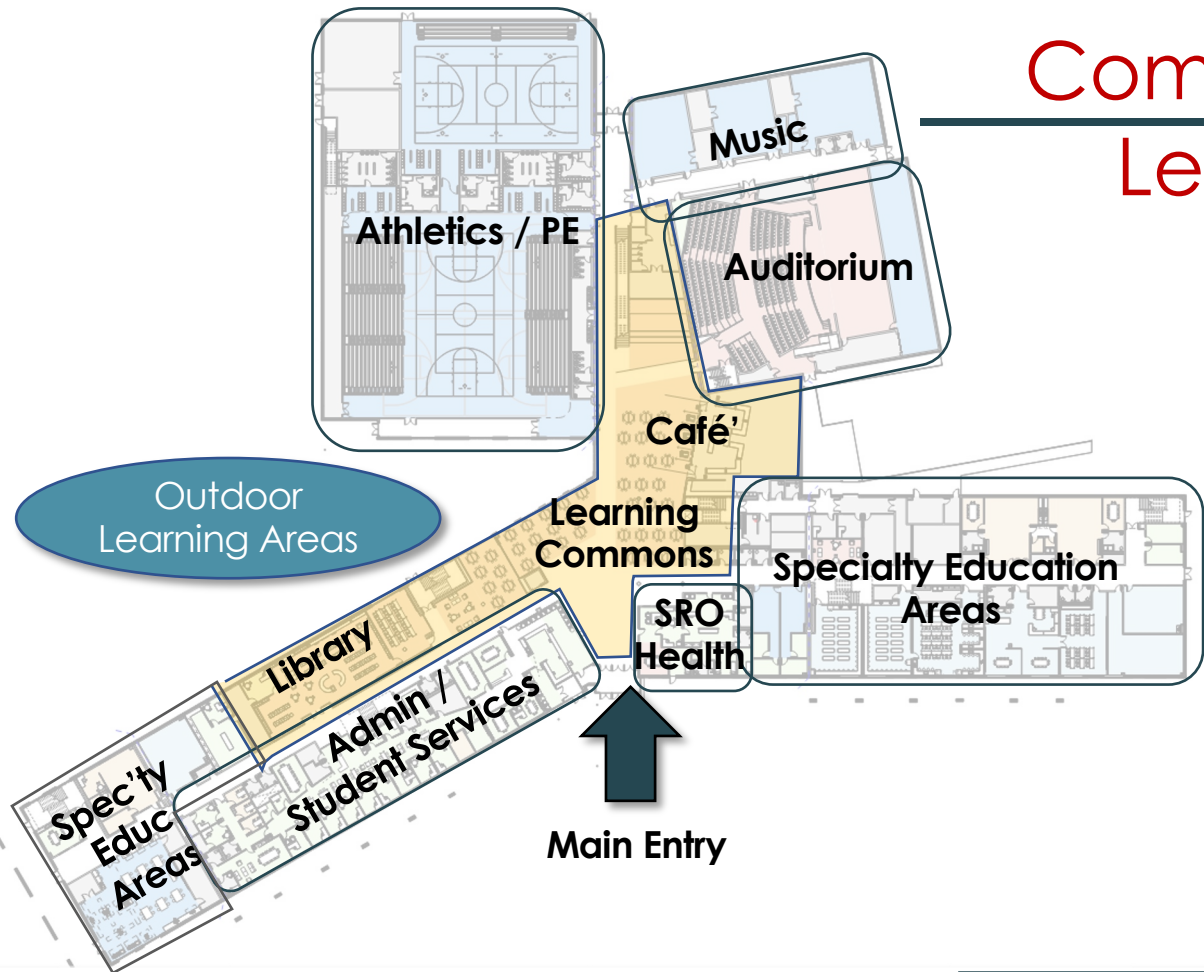


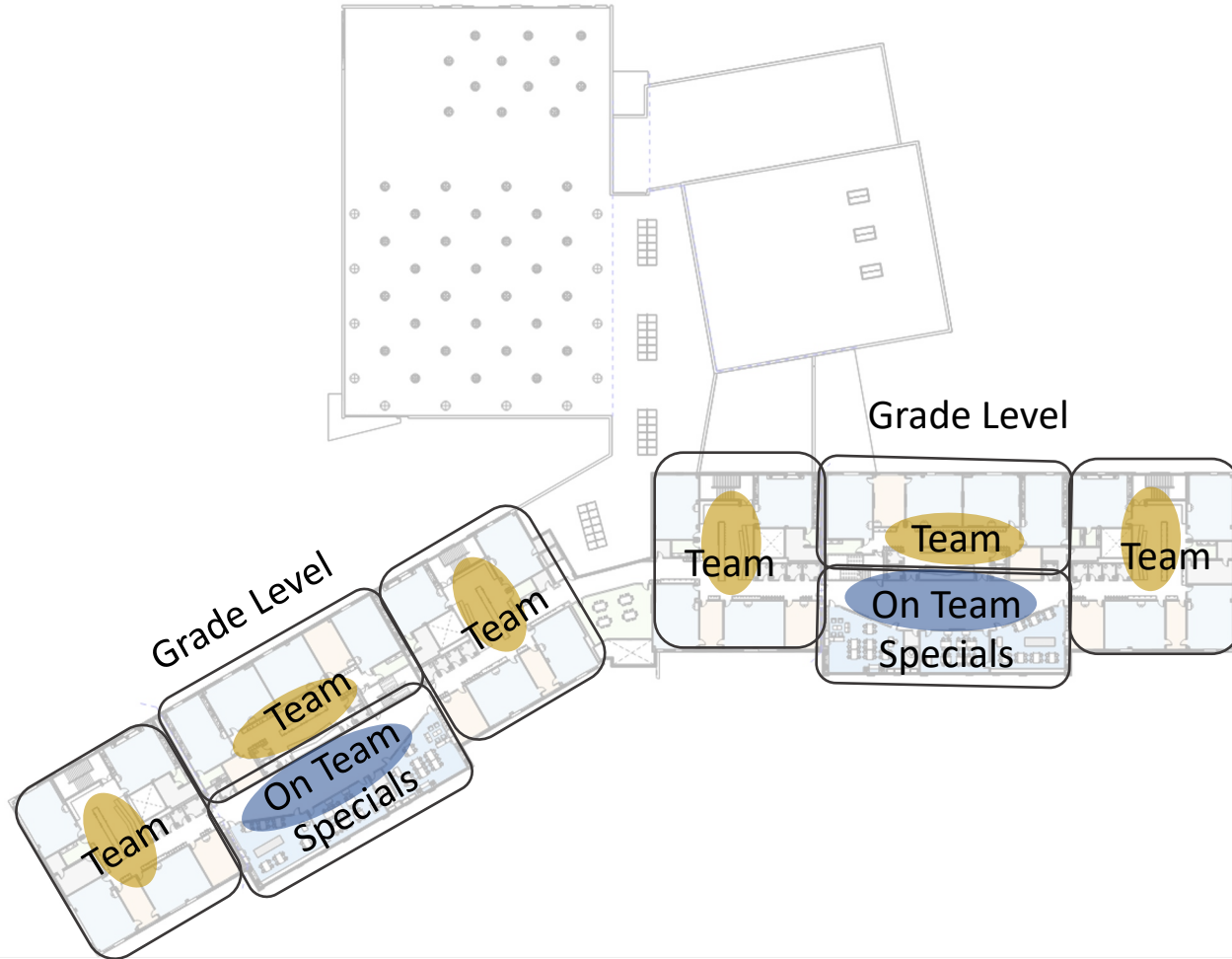


Community Level 1

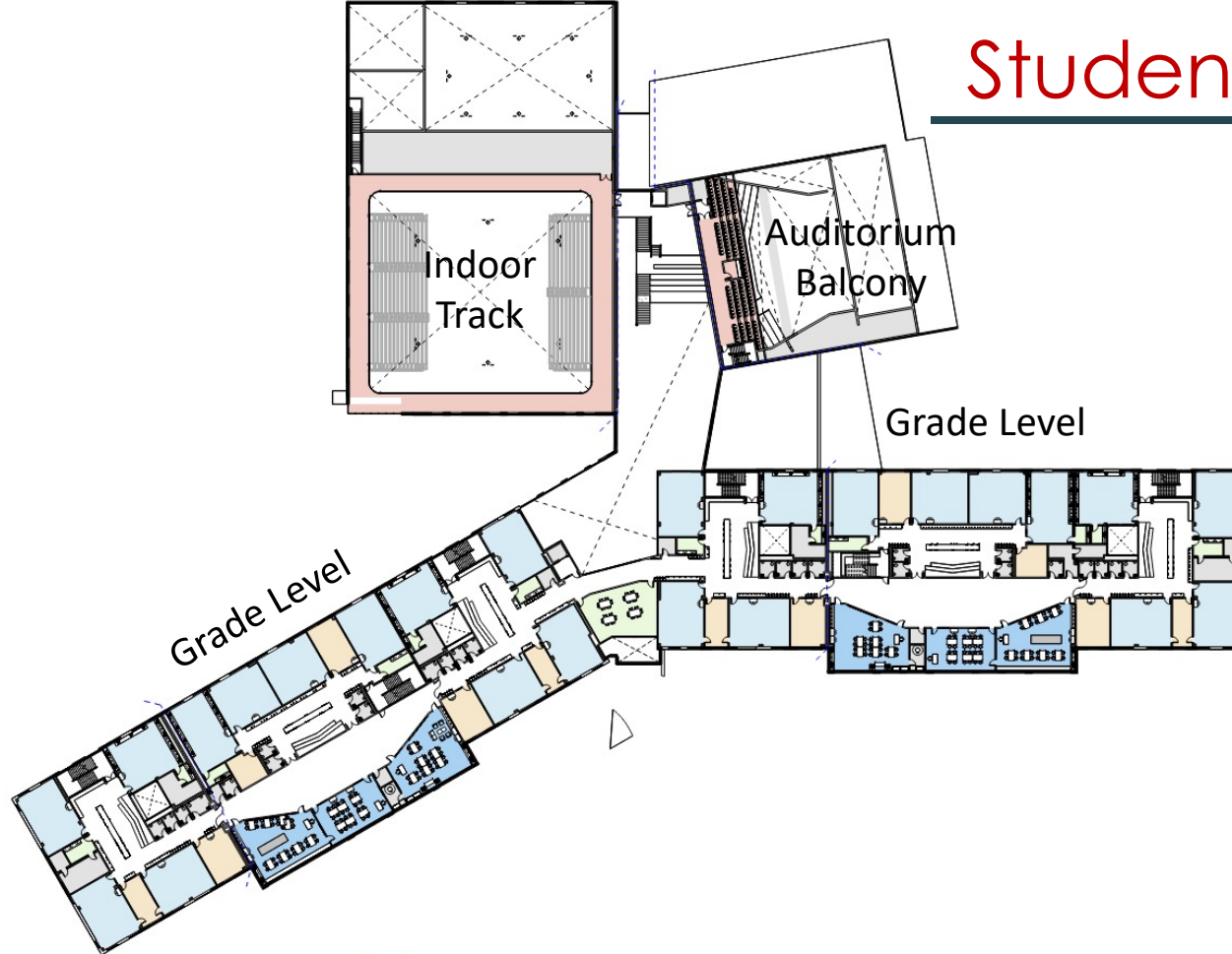


Community Level 1

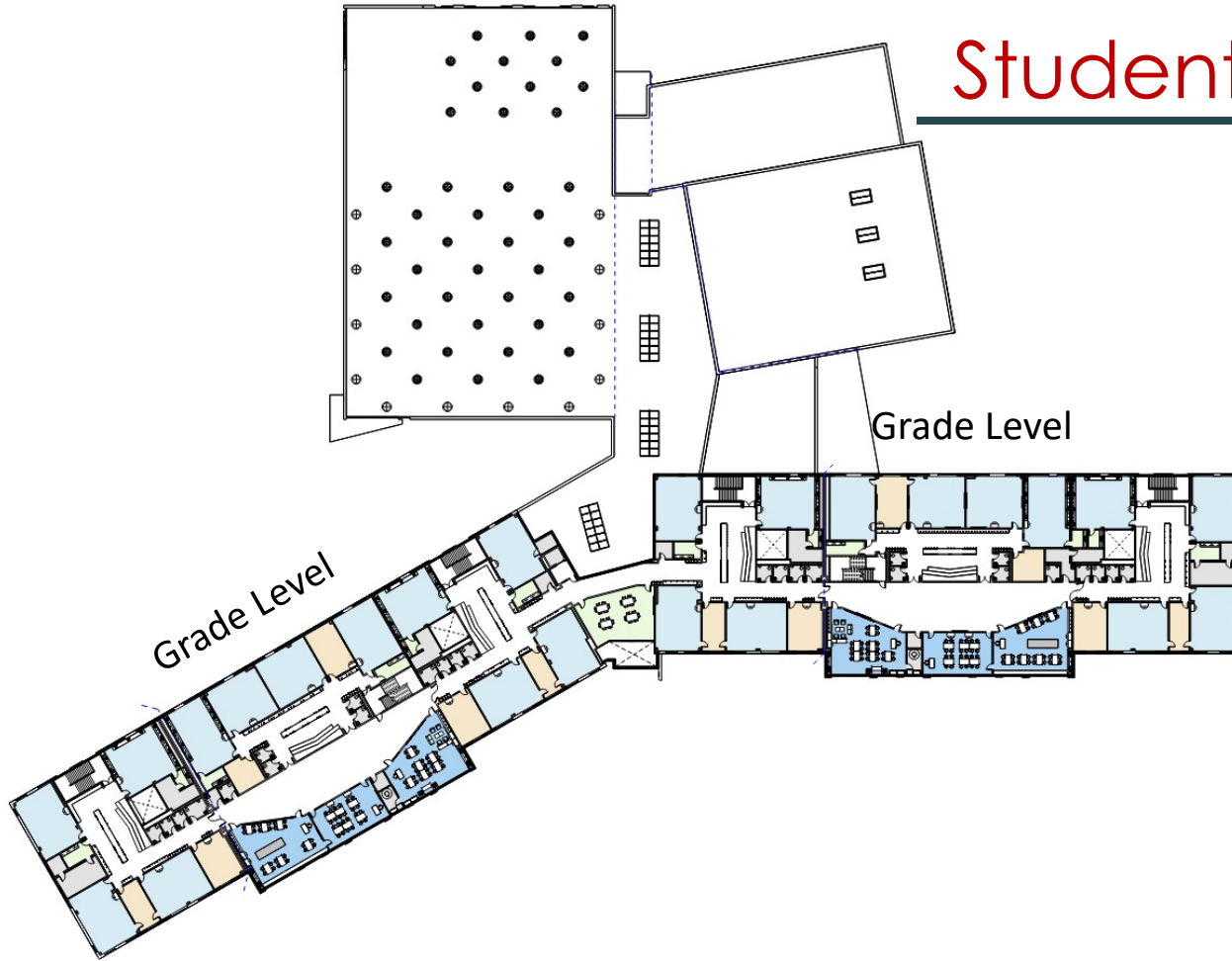


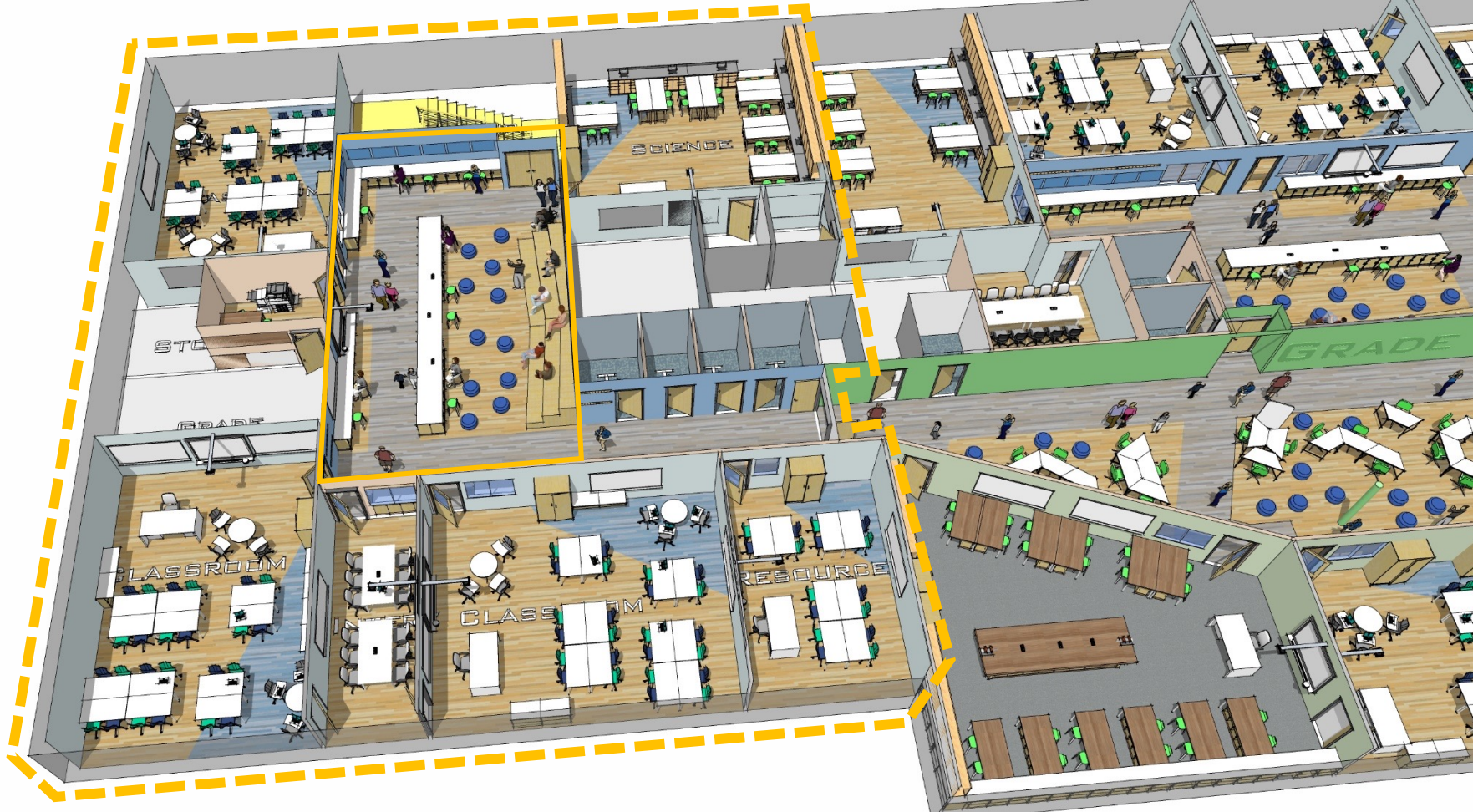


Student Level 2



Student Level 3







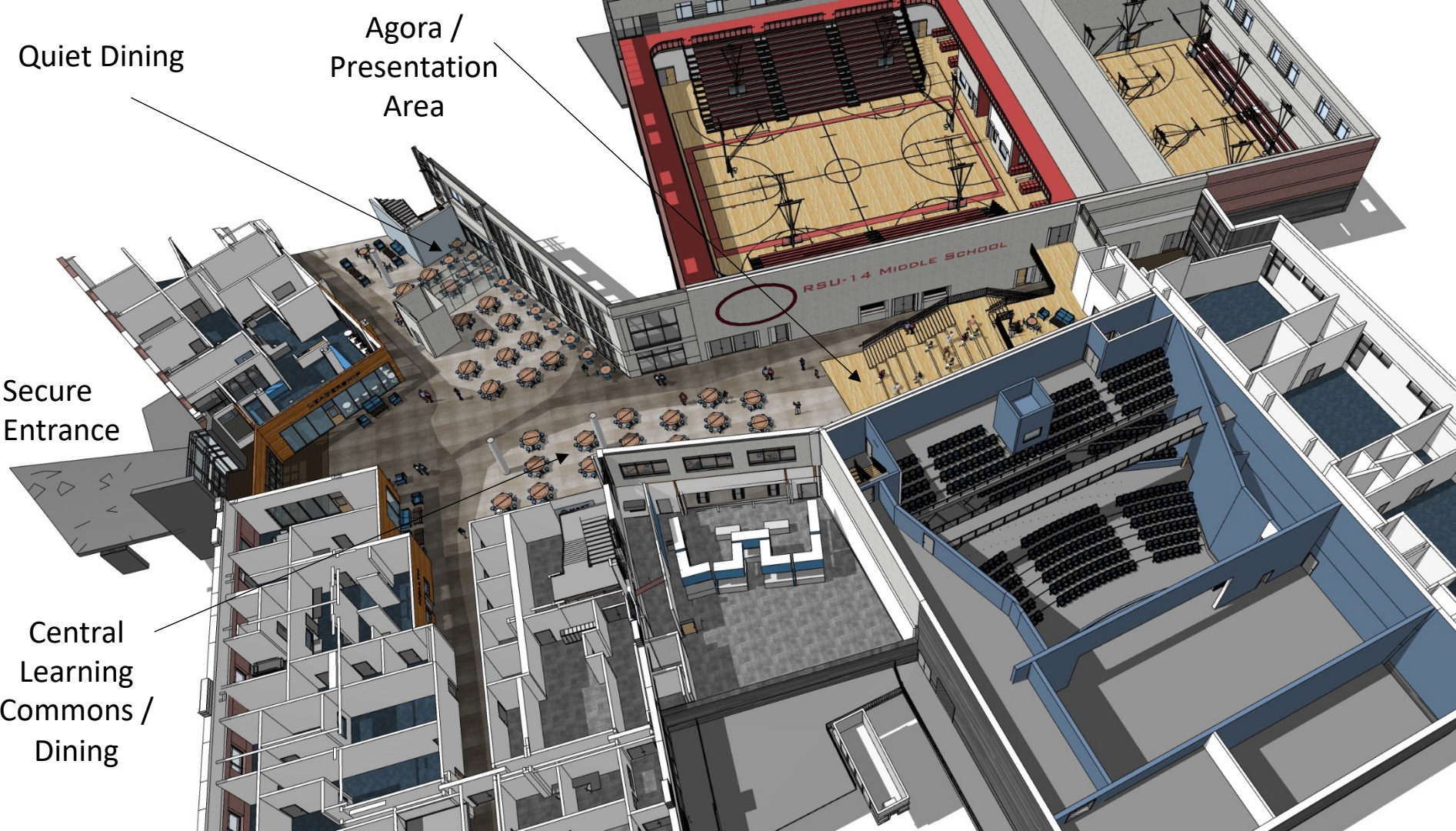


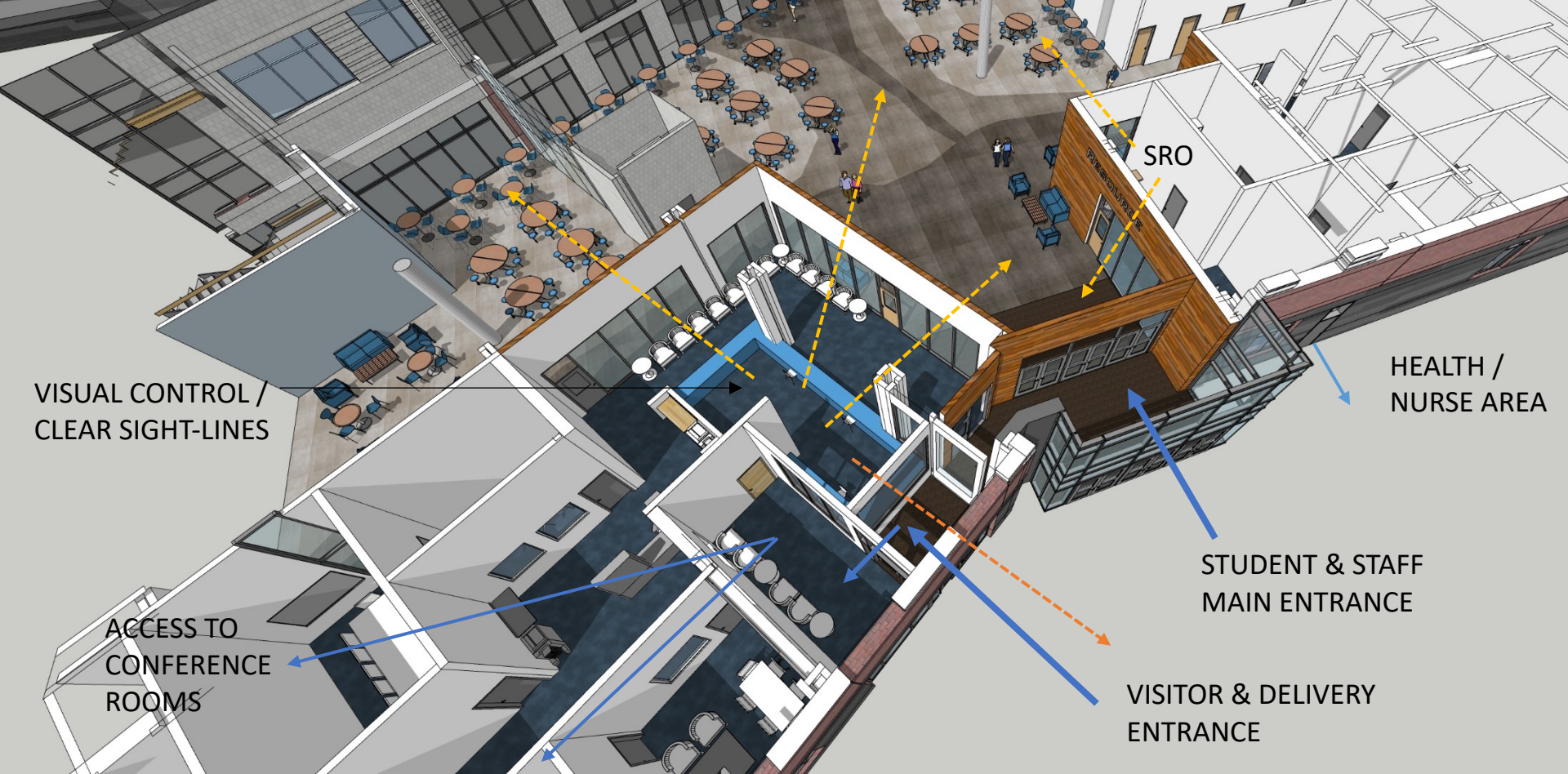
Quiet Dining

Agora /
Presentation
Area

Secure
Entrance

Central
Learning
Commons /
Dining





VISUAL CONTROL /
CLEAR SIGHT-LINES

ACCESS TO
CONFERENCE
ROOMS

SRO

HEALTH /
NURSE AREA

STUDENT & STAFF
MAIN ENTRANCE

VISITOR & DELIVERY
ENTRANCE

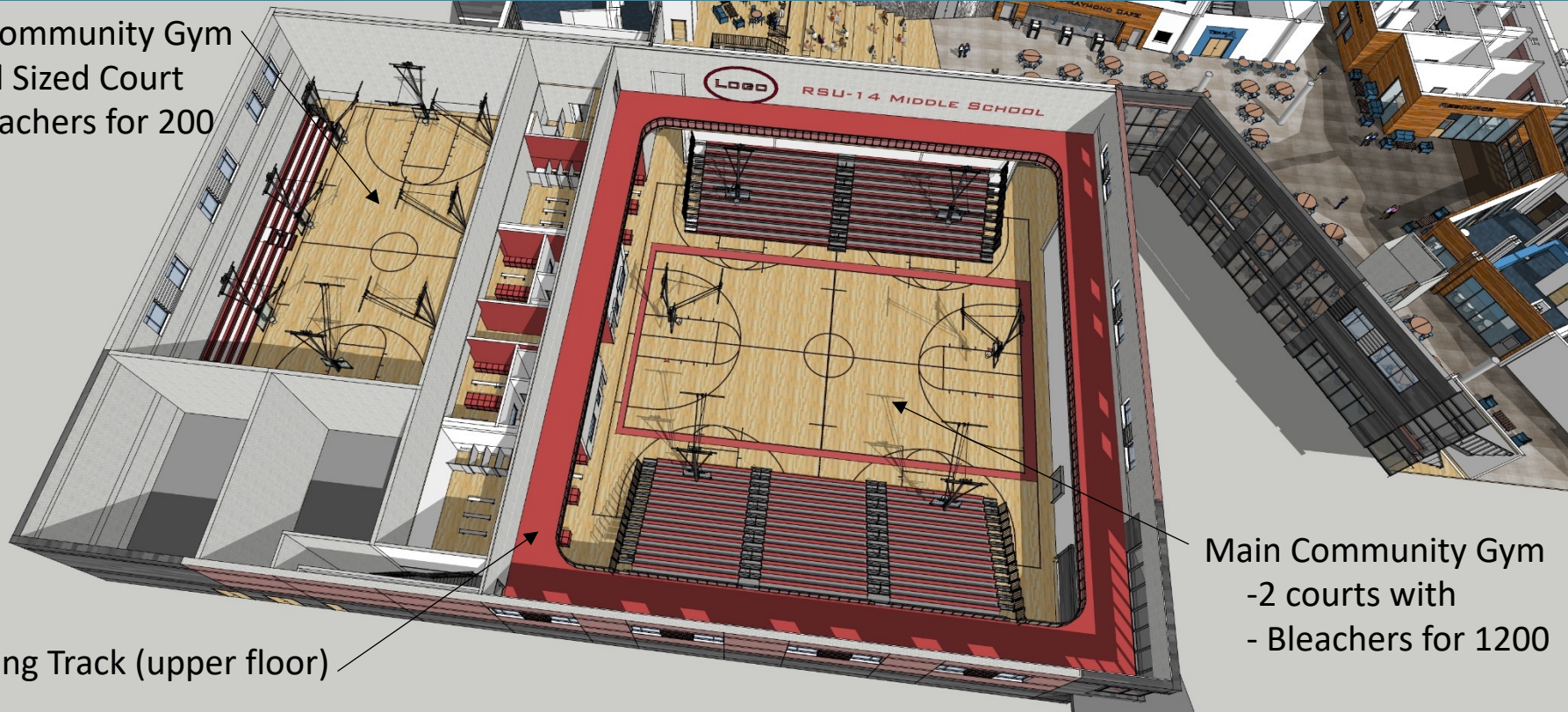
Small Community Gym

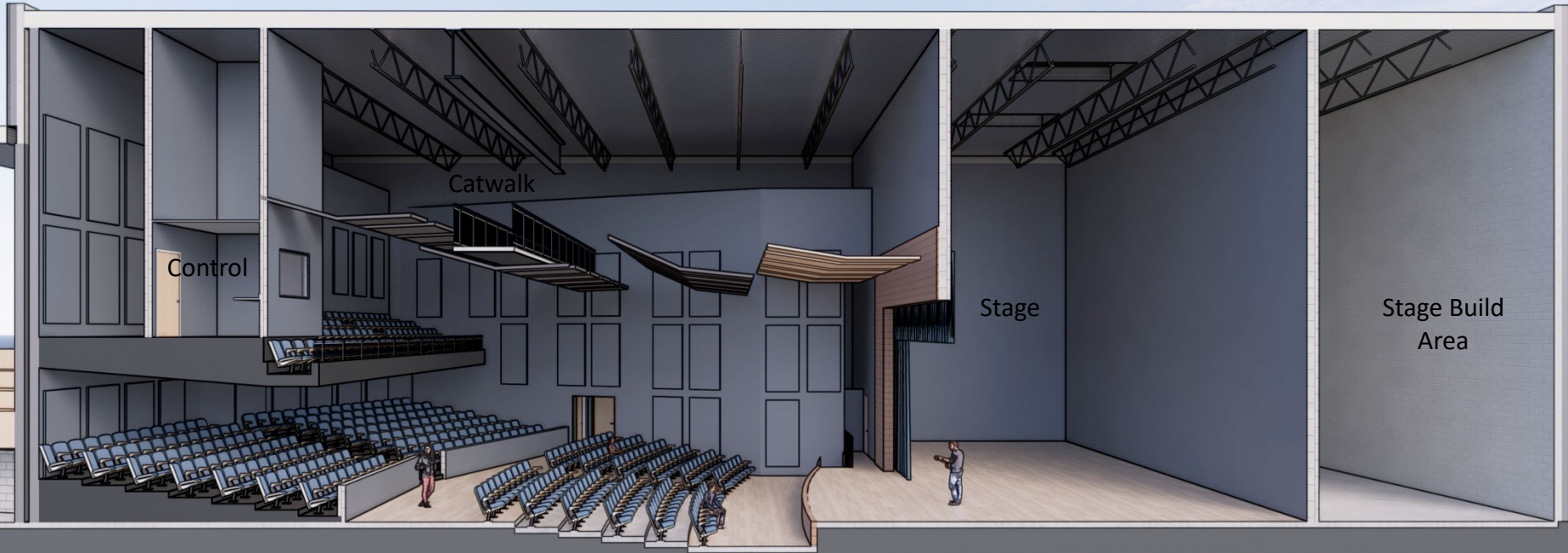
- Full Sized Court
- Bleachers for 200

Main Community Gym

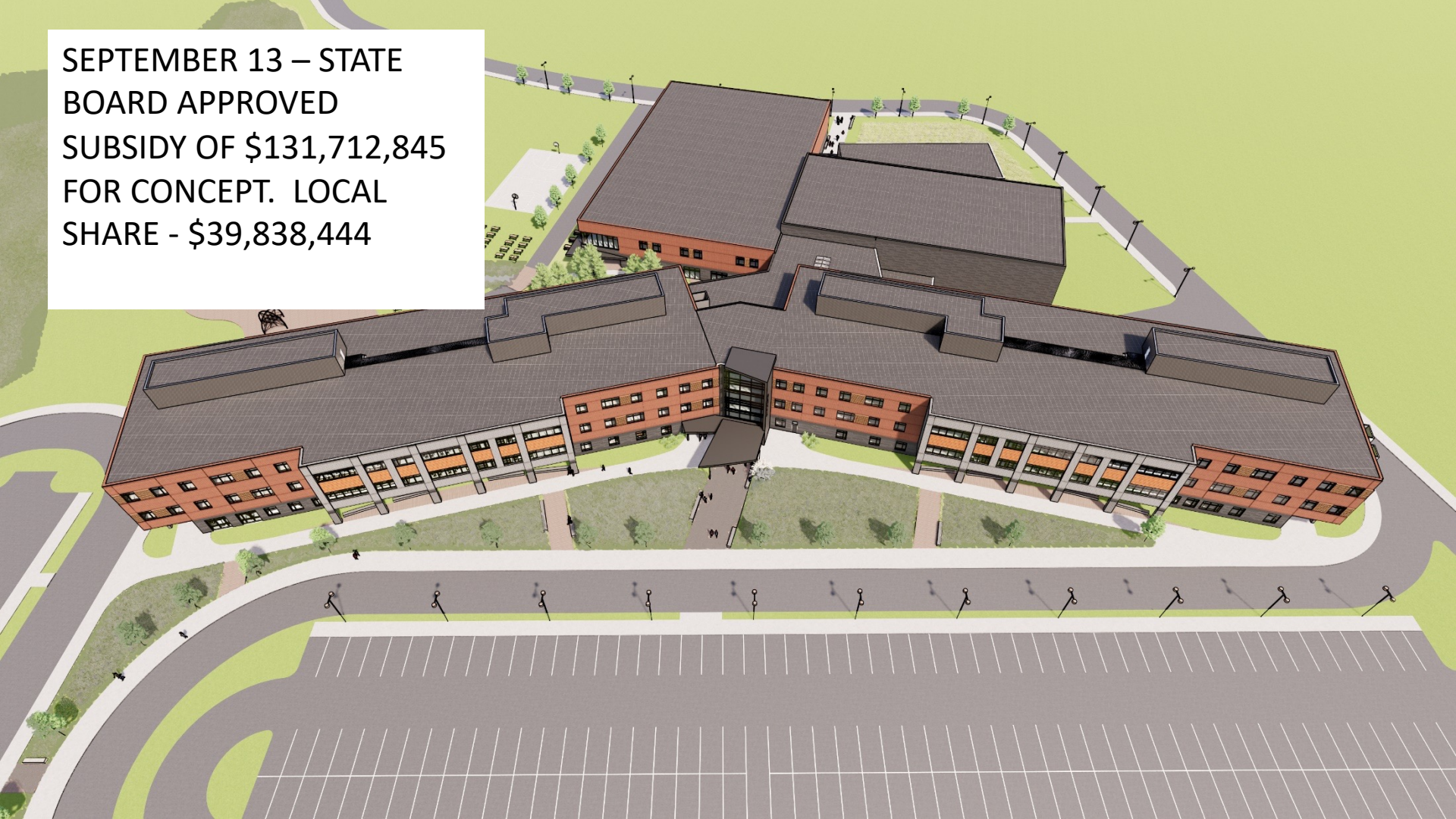
- 2 courts with
- Bleachers for 1200

Running Track (upper floor)

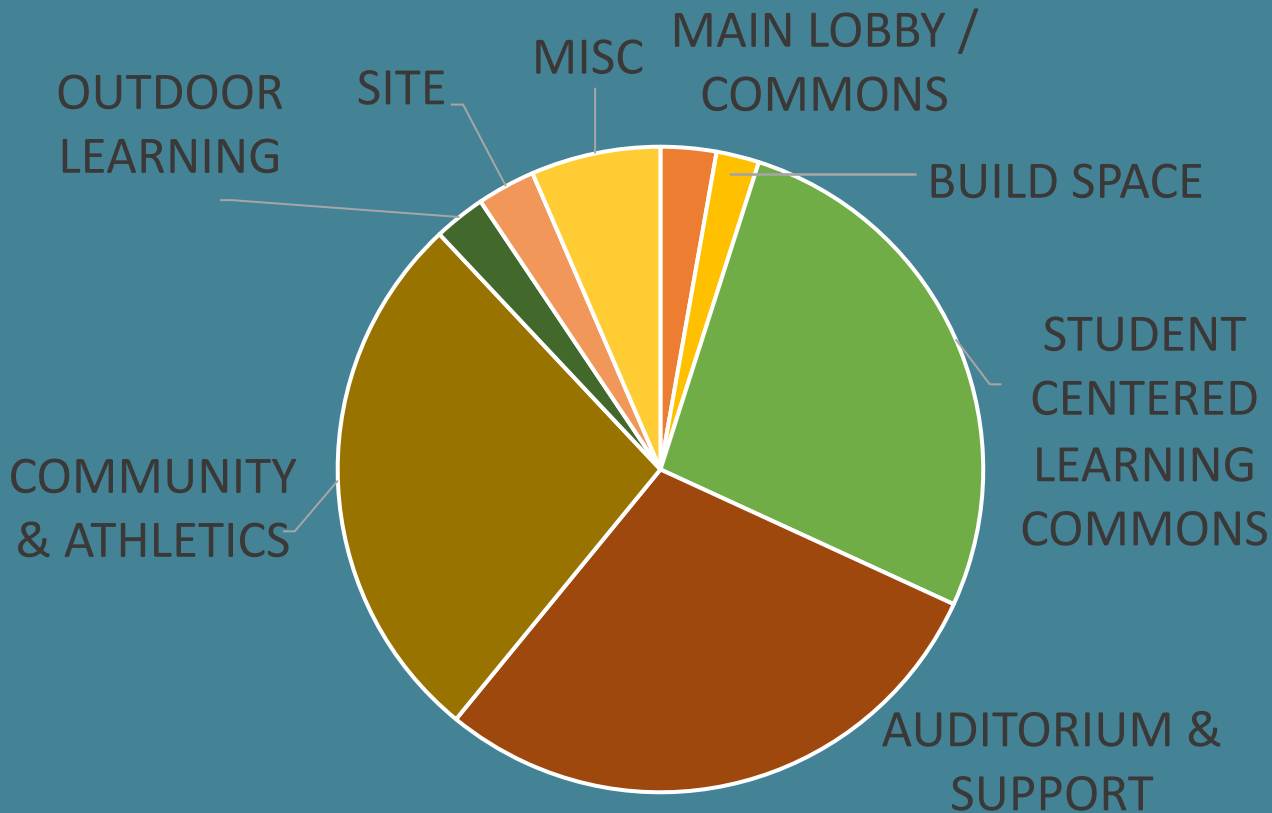




SEPTEMBER 13 – STATE
BOARD APPROVED
SUBSIDY OF \$131,712,845
FOR CONCEPT. LOCAL
SHARE - \$39,838,444



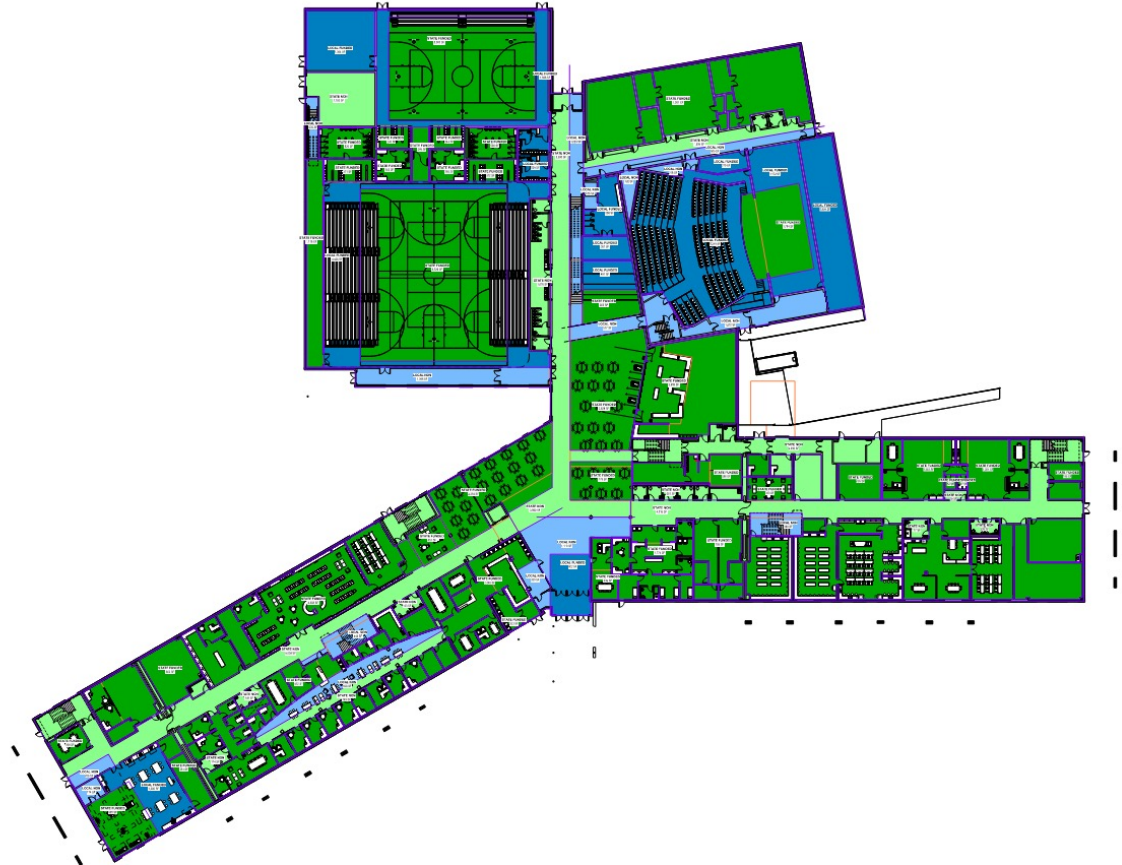
LOCAL OPTIONS RECOMMENDED BY BUILDING COMMITTEE

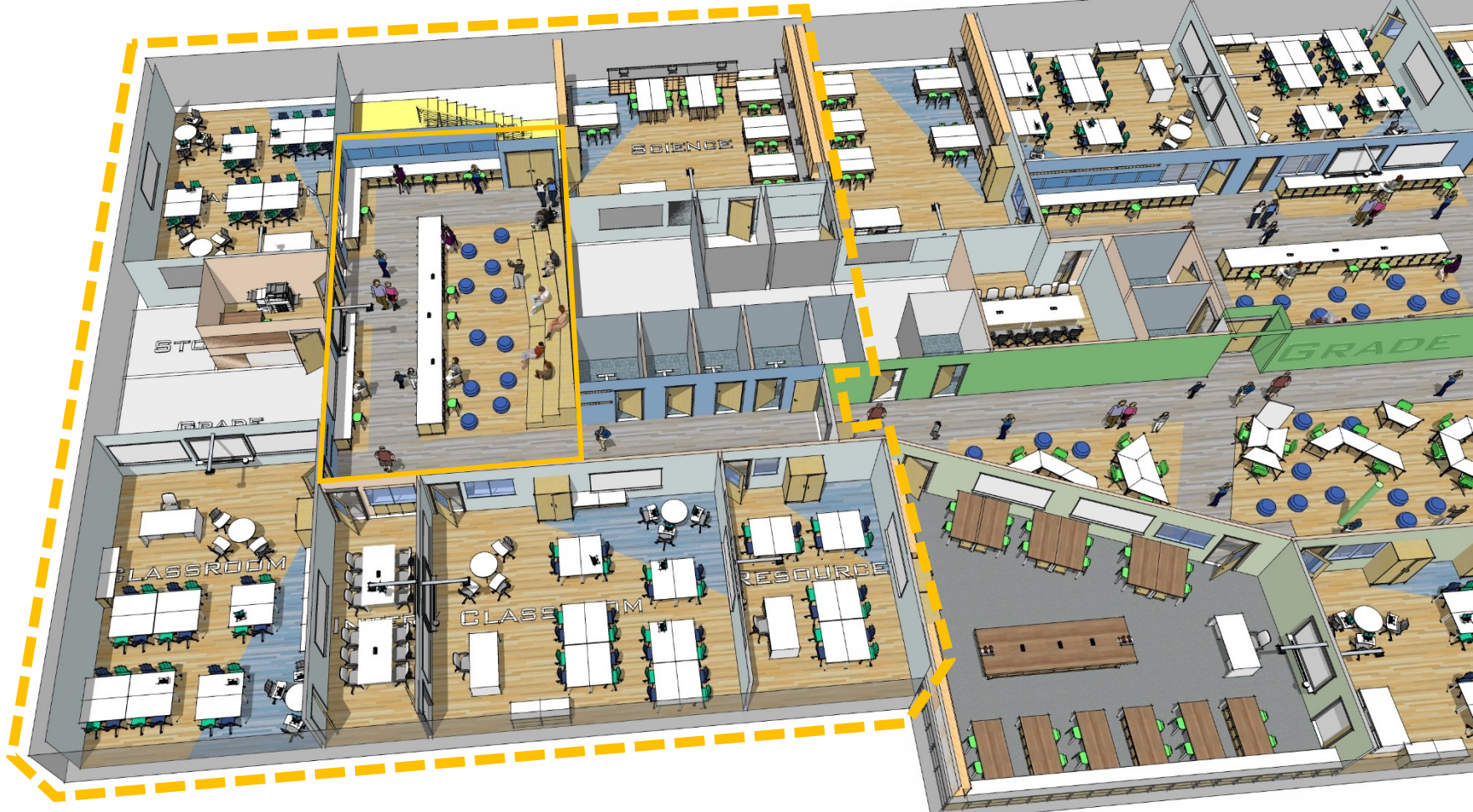


A PARTNERSHIP WITH THE STATE

State Funded Space
(Green)

Community Funded
Space (Blue)







A PARTNERSHIP WITH THE STATE

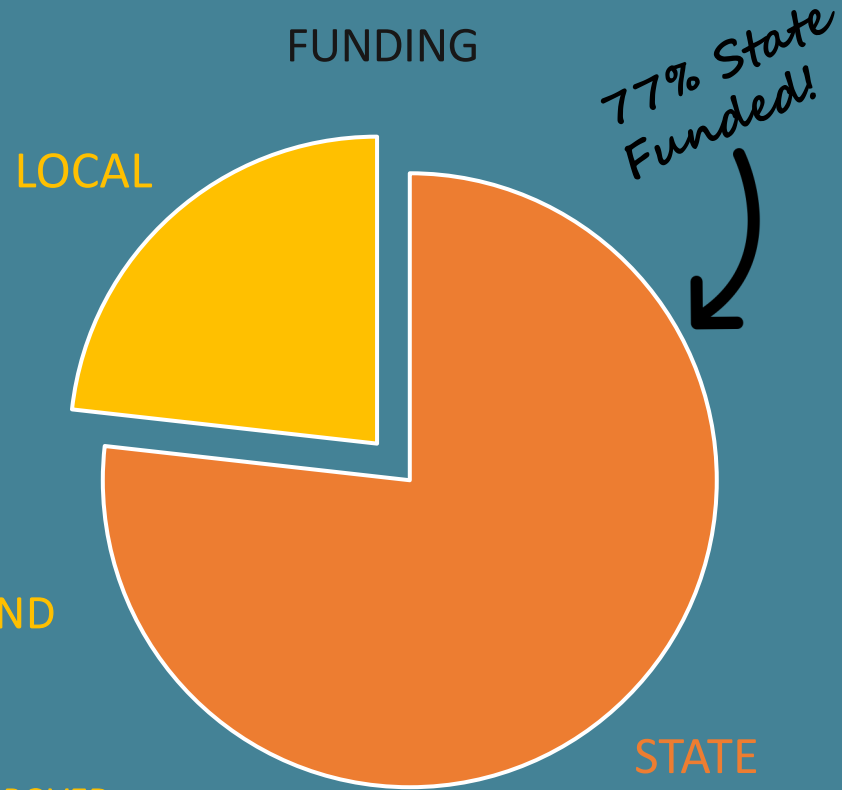
FINAL PROJECT BUDGET

TOTAL PROJECT: \$171.5M
STATE FUNDING: \$131.7M
LOCAL FUNDING: \$39.8M

APPROXIMATE TAX IMPACT*

\$0.79/1000 WINDHAM \$0.56/1000 RAYMOND

*ACCOUNTS FOR RETIRING WHS BOND
ASSUMES CURRENT INTEREST RATES. (LIKELY TO REDUCE)
ADJUSTMENTS TO BE MADE AS BUDGET IS REVIEWED AND APPROVED
WITHOUT STATE FUNDING, IMPACTS WOULD BE \$3.76/1000 WINDHAM, \$2.18/1000
RAYMOND.



A PARTNERSHIP WITH THE STATE

APPROXIMATE TAX IMPACT

HOME VALUE	TAX IMPACT WINDHAM		TAX IMPACT RAYMOND	
250,000	\$198/YEAR	\$16.46/MOS	\$140/YEAR	\$11.67/MOS
300,000	\$237/YEAR	\$19.75/MOS	\$168/YEAR	\$14.00/MOS
350,000	\$277/YEAR	\$23.04/MOS	\$196/YEAR	\$16.33/MOS
400,000	\$316/YEAR	\$26.33/MOS	\$224/YEAR	\$18.66/MOS
450,000	\$356/YEAR	\$29.63/MOS	\$252/YEAR	\$21.00/MOS

ADJUSTMENTS TO BE MADE AS BUDGET IS REVIEWED AND APPROVED

TAX IMPACT WITHOUT STATE SUPPORT

APPROXIMATE TAX IMPACT

HOME VALUE	TAX IMPACT WINDHAM		TAX IMPACT RAYMOND	
250,000	\$940/YEAR	\$78.33/MOS	\$545/YEAR	\$45.42/MOS
300,000	\$1128/YEAR	\$94.00/MOS	\$654/YEAR	\$54.50/MOS
350,000	\$1316/YEAR	\$109.67/MOS	\$763/YEAR	\$63.58/MOS
400,000	\$1504/YEAR	\$125.33/MOS	\$872/YEAR	\$72.67/MOS
450,000	\$1692/YEAR	\$141.00/MOS	\$981/YEAR	\$81.75/MOS

ADJUSTMENTS TO BE MADE AS BUDGET IS REVIEWED AND APPROVED

A PARTNERSHIP WITH THE STATE – YEAR 1 – INCLUDES RAYMOND “CIRCUIT BREAKER”

APPROXIMATE TAX IMPACT

HOME VALUE	TAX IMPACT WINDHAM .28		TAX IMPACT RAYMOND .33	
250,000	\$70.00/YEAR	\$5.83/MOS	\$82.50/YEAR	\$6.88/MOS
300,000	\$84.00/YEAR	\$7.00/MOS	\$99.00/YEAR	\$8.25/MOS
350,000	\$98.00/YEAR	\$8.16/MOS	\$115.50/YEAR	\$9.62/MOS
400,000	\$112.00/YEAR	\$9.33/MOS	\$132.00/YEAR	\$11.00/MOS
450,000	\$126.00/YEAR	\$10.50/MOS	\$148.50/YEAR	\$12.37/MOS

ADJUSTMENTS TO BE MADE AS BUDGET IS REVIEWED AND APPROVED

A PARTNERSHIP WITH THE STATE – YEAR 2 – INCLUDES RAYMOND “CIRCUIT BREAKER”

APPROXIMATE TAX IMPACT

HOME VALUE	TAX IMPACT WINDHAM .69		TAX IMPACT RAYMOND .52	
250,000	\$172.50/YEAR	\$14.38/MOS	\$130/YEAR	\$10.83/MOS
300,000	\$207.00/YEAR	\$17.25/MOS	\$156/YEAR	\$13.00/MOS
350,000	\$241.50/YEAR	\$20.13/MOS	\$182/YEAR	\$15.16/MOS
400,000	\$276.00/YEAR	\$23.00/MOS	\$208/YEAR	\$17.33/MOS
450,000	\$310.50/YEAR	\$25.88/MOS	\$234/YEAR	\$19.50/MOS

ADJUSTMENTS TO BE MADE AS BUDGET IS REVIEWED AND APPROVED

SUSTAINABILITY



DURABLE, LOW MAINTENANCE, LONG LASTING MATERIALS



- MASONRY CONSTRUCTION
- NON-WAX FLOORING,
- HIGH QUALITY FINISHES

LOW ENERGY USAGE



- HEATING AND COOLING THROUGH NON-FOSSIL FUELS
- SUSTAINABLE AIR-SOURCE HEAT PUMPS – 4 PIPE
- PREDICTED EUI (ENERGY USAGE INDEX) = 34.9
- OTHER BUILDINGS IN DISTRICT ARE 60-70, NATIONAL AVERAGES ARE 100

HIGHLY EFFICIENT EXTERIOR ENVELOPE



- EXCEEDS ENERGY CODE
- HIGHLY INSULATED
- WELL DETAILED



HEALTHY BUILDINGS



GOOD AIR QUALITY

- MEET/EXCEED ASHRAE STANDARDS WITH AIR CHANGES
- SIGNIFICANT FILTRATION
- COMFORT OF STUDENTS AND STAFF



NATURAL LIGHTING

- THROUGHOUT ALL EDUCATION AREAS
- DAYLIGHT HARVESTING TO REDUCE ENERGY



GREAT ACOUSTICS

BENEFITS



- LOWER ABSENTEEISM
- BETTER LEARNING (IMPROVED COGNITIVE FUNCTIONS AND TEST SCORES)
- BETTER MENTAL HEALTH
- REDUCED CARBON FOOTPRINT / ENVIRONMENTAL IMPACT (THE RIGHT THING TO DO)

TO MAKE A DIFFERENCE

