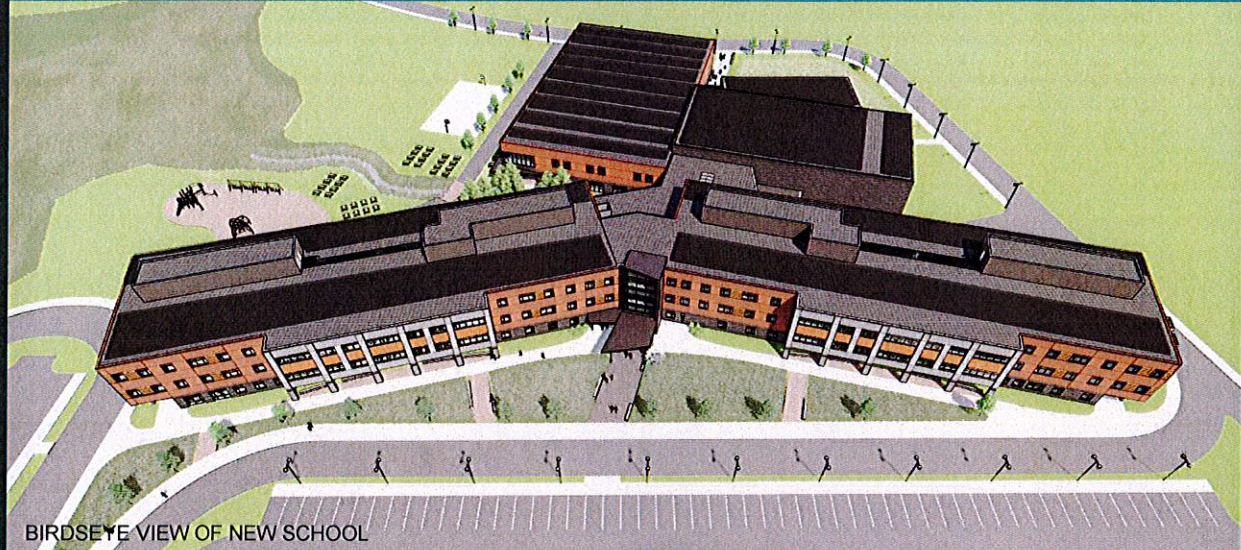
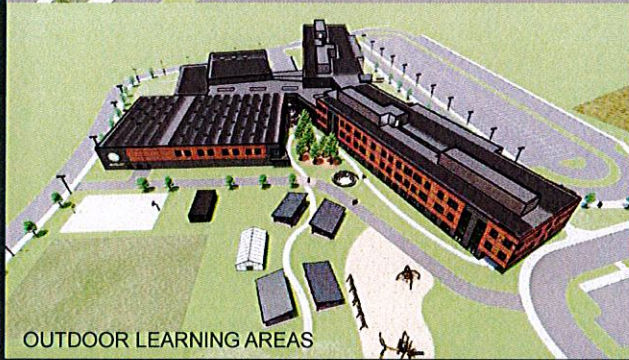


RSU-14's New Middle School

Vote November 7th



BIRDSEYE VIEW OF NEW SCHOOL



OUTDOOR LEARNING AREAS



MAIN ENTRANCE

STUDENT IMPACTS:

MODERN EDUCATION ENVIRONMENTS

- Fully equipped and adequately sized classrooms and labs
- Good natural light, air quality, & acoustics
- Integrated technology

SAFE / SECURE SCHOOL

- Secure entrance sequence
- Safe and efficient drop-off areas
- Secure-able and supervise-able design

EQUITY

- Offers same opportunities to all students grades 5th through 8th in both Raymond and Windham

SMALL LEARNING COMMUNITIES

- The new school is set up for students to be taught in groups of 100 or less
- Allows educators and administrators to know students better and provides better individual support
- Creates better peer relationships and sense of belonging
- Integrates special education and support services

INCREASED HANDS-ON LEARNING

- Includes new fully equipped modern art rooms and STEM rooms (build areas)
- Art, STEM, and other specialty learning integrated into the team
- Allows for integration of subjects for project based learning

COMMUNITY IMPACTS:

PERFORMING ARTS / COMMUNITY PRESENTATIONS

- Includes a new 600 seat performing arts center and supporting spaces

GYMNASIUM

- Includes two new gymnasiums, one large and one small for community use / youth sports
- Includes an elevated running track within the larger gym

ATHLETIC FIELDS

- Includes three new athletic fields for community use / youth sports

CORE OF BUILDING / AGORA

- Creates presentation areas of various sizes for community presentations and meetings

NATURAL AREAS / PARK

- Creates outdoor areas in partnership with the Pringle Preserve and the Presumpscot Regional Land Trust
- Includes eco-studies boardwalk and outdoor classroom areas and a greenhouse
- Includes walking trails

TWO COMMUNITY CENTERS

- The Windham Middle School and the Jordan Small Middle School may be re-purposed as community centers in each town

TAX IMPACTS:

| | |
|-----------------------|-----------------|
| STATE FUNDING: | \$131.7M |
| LOCAL FUNDING: | \$39.8M |
| TOTAL PROJECT: | \$171.5M |

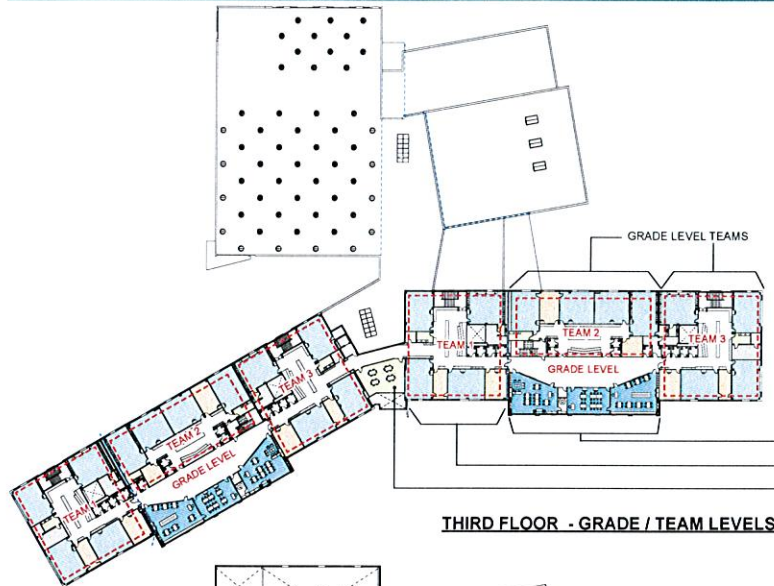


APPROXIMATE TAX IMPACT*
\$0.79/1000 WINDHAM
\$0.56/1000 RAYMOND

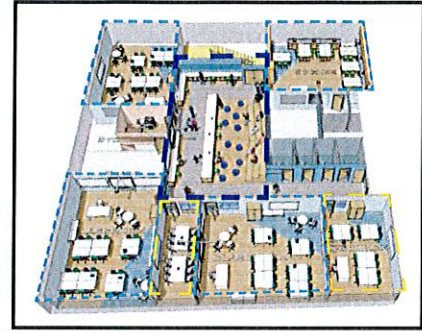
*ACCOUNTS FOR RETIRING WHS BOND
 ASSUMES CURRENT INTEREST RATES.
 (LIKELY TO REDUCE)
 WITHOUT STATE FUNDING, IMPACTS WOULD
 BE \$3.76/1000 WINDHAM,
 \$2.18/1000 RAYMOND.

RSU-14's New Middle School

Vote November 7th

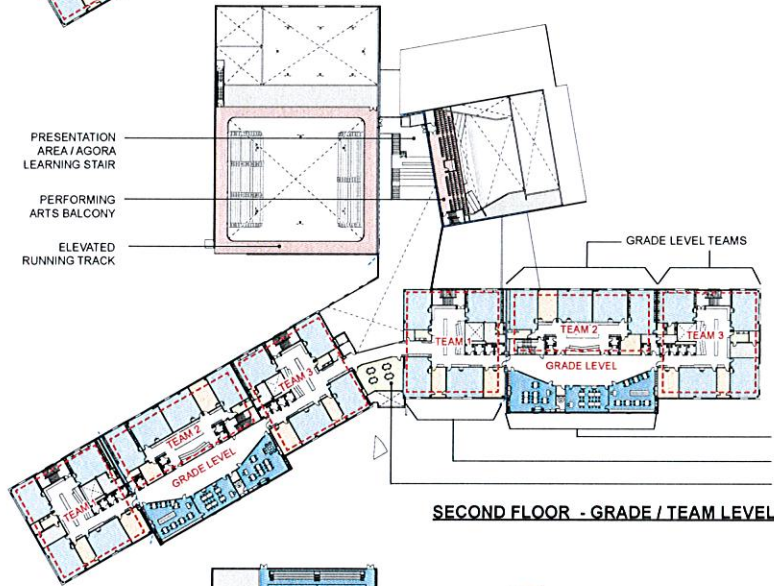


THIRD FLOOR - GRADE / TEAM LEVELS



TEAM AREA

- ON TEAM SPECIALTY EDUCATION AREAS (ART, STEM, WORLD LANGUAGES)
- GRADE LEVEL TEAM
- PROFESSIONAL DEVELOPMENT / MEETING

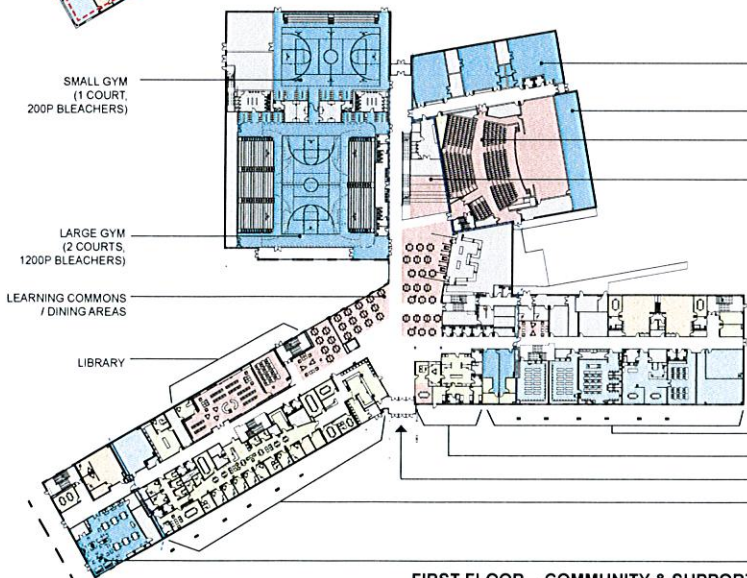


SECOND FLOOR - GRADE / TEAM LEVELS



CLASSROOM

- ON TEAM SPECIALTY EDUCATION AREAS (ART, STEM, WORLD LANGUAGES)
- GRADE LEVEL TEAM
- PROFESSIONAL DEVELOPMENT / MEETING



FIRST FLOOR - COMMUNITY & SUPPORT LEVEL

- MUSIC, BAND, CHORUS AREAS
- STAGE BUILD LAB
- PERFORMING ARTS CENTER (600P)
- PRESENTATION AREA / AGORA LEARNING STAIR



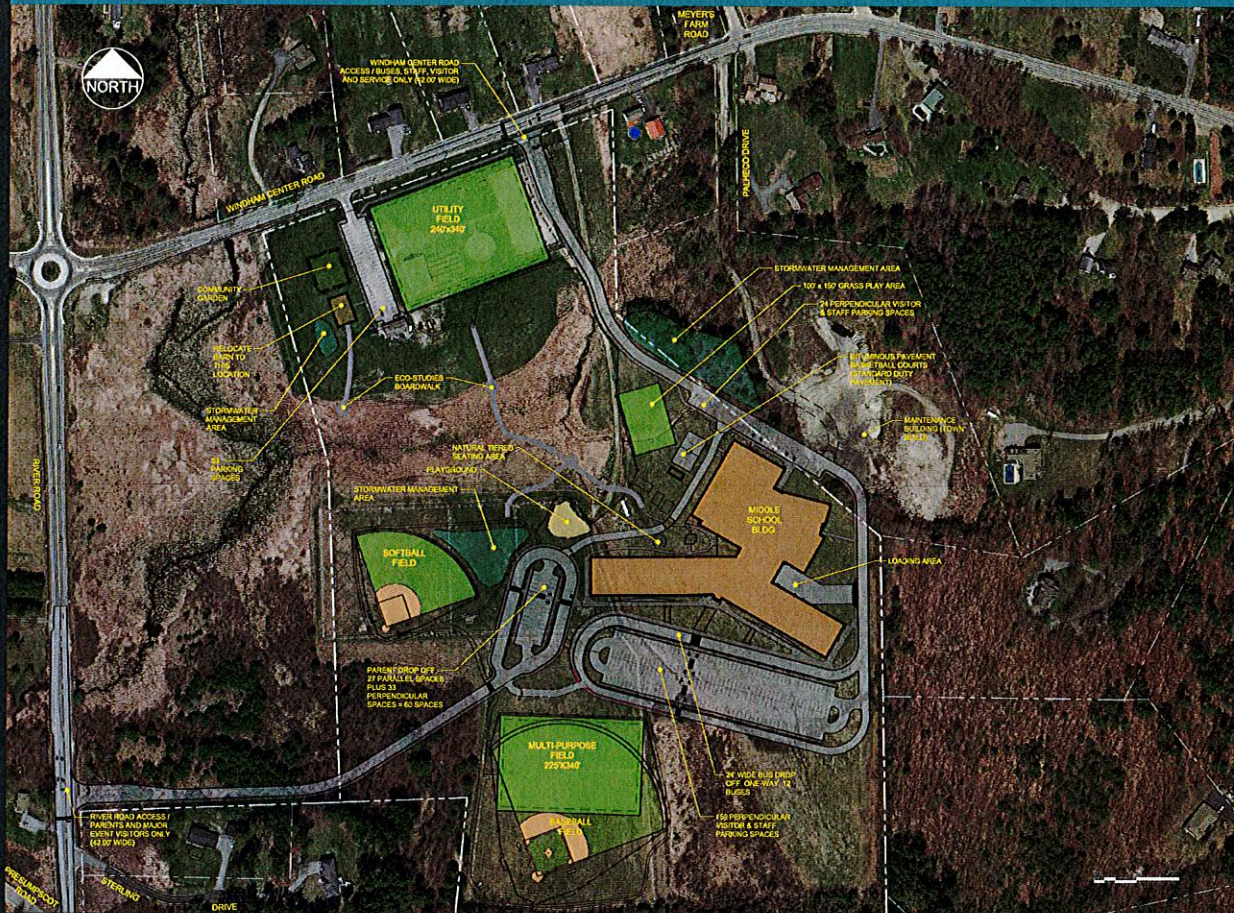
ART STUDIO

- SPECIALTY EDUCATION AREAS
- NURSE & SCHOOL RESOURCE OFFICER
- SECURE MAIN ENTRANCE
- ADMINISTRATION & STUDENT SERVICES SUITE

LARGE PROJECT / BUILD LAB

RSU-14's New Middle School

Vote November 7th



TOP 5 PROJECT IMPACTS:

1 RSU 14 HAS AN OPPORTUNITY TO MAKE A SIGNIFICANT INVESTMENT IN OUR COMMUNITY WITH OVER 131.7 MILLION DOLLARS IN STATE FUNDING SUPPORT

A once in a lifetime opportunity to build a \$171.5M facility for a \$39.8 local investment
 Our current facilities are in need of significant improvements to continue to function as schools
 The local investment is less than the cost to renovate existing facilities in place

2 AN EQUAL OPPORTUNITY FOR ALL RSU 14 STUDENTS - WITH ROOM FOR EVERYONE

Brings Raymond and Windham students together from 5th Grade to 8th Grade
 Creates increased hands-on learning spaces
 Provides new, innovative education space throughout that is learner-centered
 Allows for universal Pre-K, by freeing up space at other schools
 Provides performing arts opportunities with an auditorium, supporting performance areas, music areas, and presentation spaces
 Utilizes the site to enable outdoor learning, leveraging the environment as a learning tool
 Provides flexibility for future growth

3 SUSTAINABILITY & EFFICIENCY FOR YEARS TO COME

Lowers energy costs for significant long term savings
 Creates an environmentally responsible solution

4 ENHANCED SAFETY AND SECURITY

Provides a secure school, consistent with modern safety standards
 Creates small learning communities that enable a "big building, small teams" approach to education

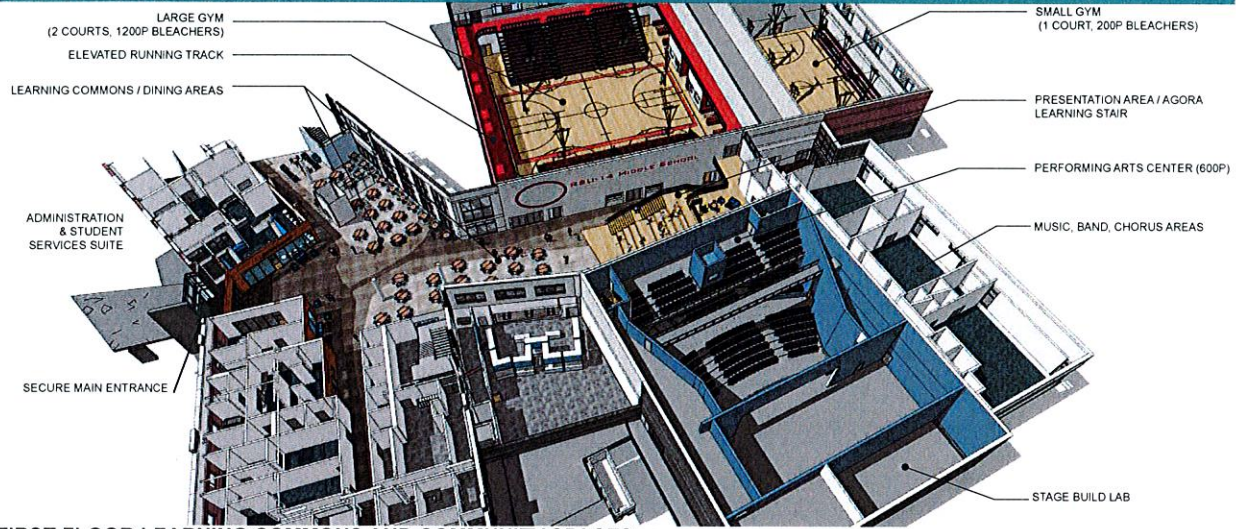
5 INCREASED COMMUNITY ASSETS

Creates two community centers (former middle schools)
 Includes a 600 seat auditorium
 Contains multiple meeting and presentation areas

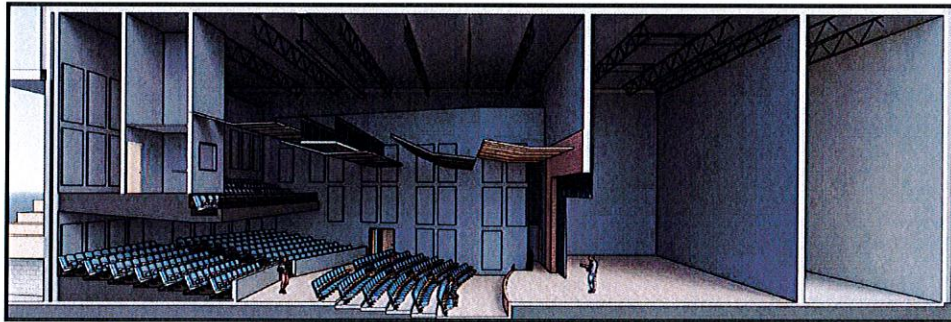
Includes two gymnasiums
 Creates an indoor elevated track
 Provides fields & trails & other outdoor assets

RSU-14's New Middle School

Vote November 7th



FIRST FLOOR LEARNING COMMONS AND COMMUNITY SPACES



PERFORMING ARTS CENTER

SUSTAINABILITY

DURABLE, LOW MAINTENANCE, LONG LASTING MATERIALS

- Masonry Construction
- High Quality Finishes
- High Performance Exterior Envelope

LOW ENERGY USAGE

- Limited Fossil Fuel Usage (Heat Pumps)
- Predicted Energy Usage of 34.9 kBtus per Square Foot (twice as efficient as other RSU-14 Schools)

HIGHLY EFFICIENT EXTERIOR ENVELOPE

- Exceeds the Energy Code
- Highly Insulated

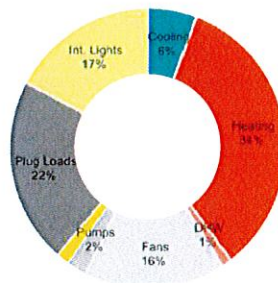
SOLAR ENERGY CREATION

- Planned integration of solar panels through a Power Purchase Agreement (at no cost to local taxpayers)
- Potential to generate as much as 50% of energy usage
- Reduces Energy Costs
- Reduces Carbon Footprint
- Building will be a Learning Tool

ENERGY USAGE INTENSITY

= **34.9**
NEW SCHOOL

= **68**
EXISTING SCHOOLS



PREDICTED ENERGY & OWNERSHIP COSTS:

\$514,000 PER YEAR IN ENERGY
\$727,000 PER YEAR IN MAINTENANCE / CUSTODIAL
\$311,000 PER YEAR IN CAPITAL RESERVE

= **\$300,000**
SAVINGS PER YEAR*

*COMPARED TO EXISTING MIDDLE SCHOOLS, INCLUDING CAPITAL RESERVE PROJECTS, ENERGY COSTS, AND CUSTODIAL/MAINTENANCE COSTS. ENERGY COSTS COULD BE LOWER WITH SOLAR PANELS