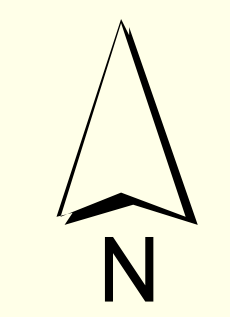


THIS MAP IS PREPARED FOR THE INVENTORY OF REAL PROPERTY AND IS COMPILED FROM RECORDED DEEDS, PLATS, TAX MAPS, SURVEYS, PLANIMETRIC MAPS AND OTHER PUBLIC RECORDS AND DATA. USERS OF THIS TAX MAP ARE HEREBY NOTIFIED THAT THE FOREMENTIONED PUBLIC PRIMARY INFORMATION SOURCES SHOULD BE CONSULTED FOR VERIFICATION OF THE INFORMATION CONTAINED ON THIS MAP. THE TOWN OF RAYMOND AND ITS MAPPING CONTRACTORS ASSUME NO LEGAL RESPONSIBILITY FOR THE INFORMATION CONTAINED HEREIN.

INFORMATION SOURCES SHOULD BE CONSULTED FOR VERIFICATION OF THE INFORMATION CONTAINED ON THIS MAP. THE TOWN OF RAYMOND AND ITS MAPPING CONTRACTORS ASSUME NO LEGAL RESPONSIBILITY FOR THE INFORMATION CONTAINED HEREIN.

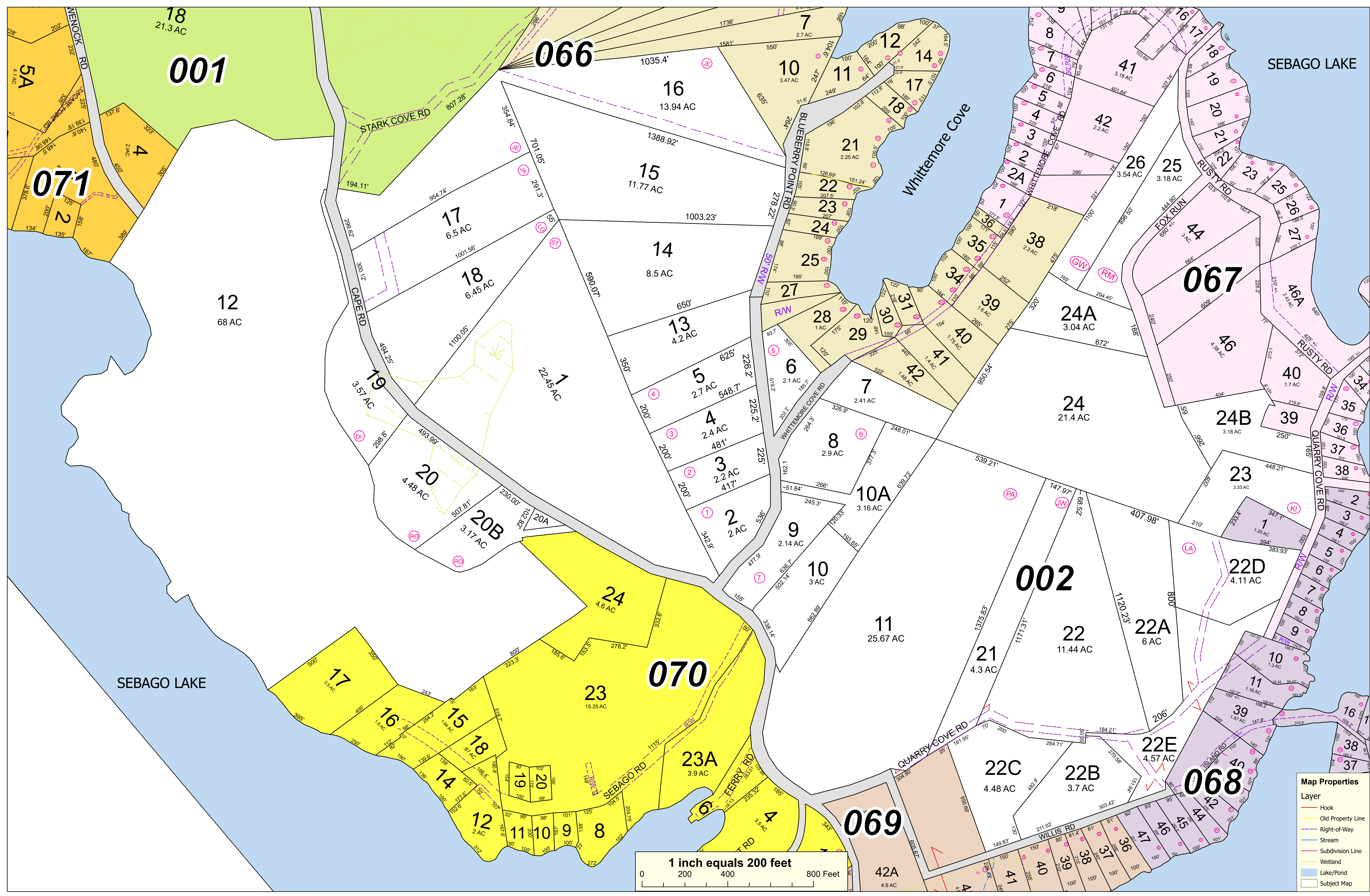
**TOWN OF RAYMOND**  
**Cumberland County, Maine**  
**2021 Property Map**



Sources:  
 Raymond Assessors' Database  
 Maine Office of GIS  
 Prepared by:  
 Sebago Technics, Inc.  
 Effective Date: April 1, 2021



**Map 02**



**Map Properties**

Layer	Color/Line Style
Hook	Red line
Old Property Line	Yellow dashed line
Right-of-Way	Blue dashed line
Stream	Blue line
Subdivision Line	Pink dashed line
Wetland	Green dashed line
Lake/Pond	Blue fill
Subject Map	White fill

