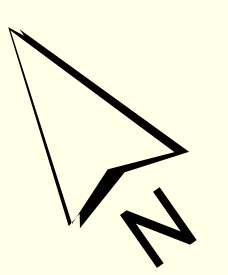
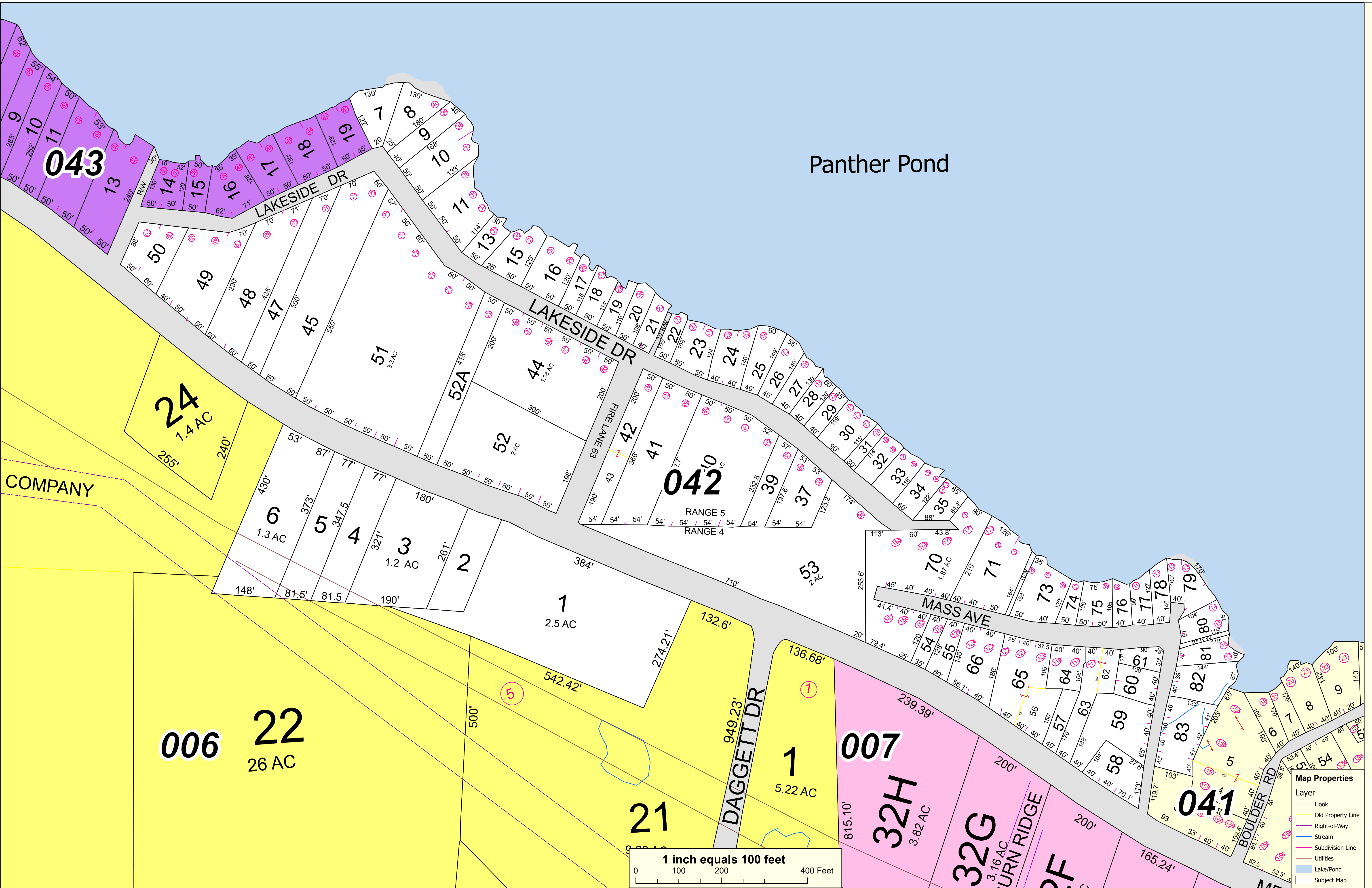
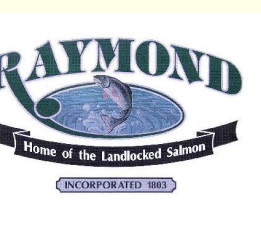


THIS MAP IS PREPARED FOR THE INVENTORY OF REAL PROPERTY IN THE TOWN OF RAYMOND AND IS COMPILED FROM RECORDED DEEDS, PLATS, TAX MAPS, SURVEYS, PLANIMETRIC MAPS, AND OTHER PUBLIC RECORDS AND DATA. USERS OF THIS TAX MAP ARE HEREBY NOTIFIED THAT THE FOREMENTIONED PUBLIC PRIMARY INFORMATION SOURCES SHOULD BE CONSULTED FOR VERIFICATION OF THE INFORMATION CONTAINED ON THIS MAP. THE TOWN OF RAYMOND AND ITS MAPPING CONTRACTORS ASSUME NO LEGAL RESPONSIBILITY FOR THE INFORMATION CONTAINED HEREIN.

**TOWN OF RAYMOND**  
**Cumberland County, Maine**  
**2021 Property Map**



Sources:  
 Raymond Assessors' Database  
 Maine Office of GIS  
 Prepared by:  
 Sabago Technics, Inc.  
 Effective Date: April 1, 2021



**Map Properties**

Layer	Color/Style
Hook	Red line
Old Property Line	Yellow line
Right-of-Way	Purple line
Stream	Blue line
Subdivision Line	Pink line
Utilities	Grey line
Lake/Pond	Light Blue fill
Subject Map	White fill