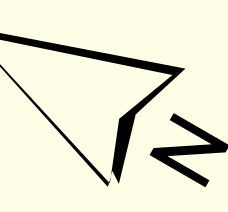
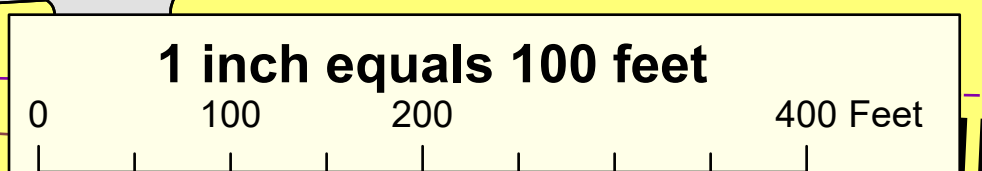
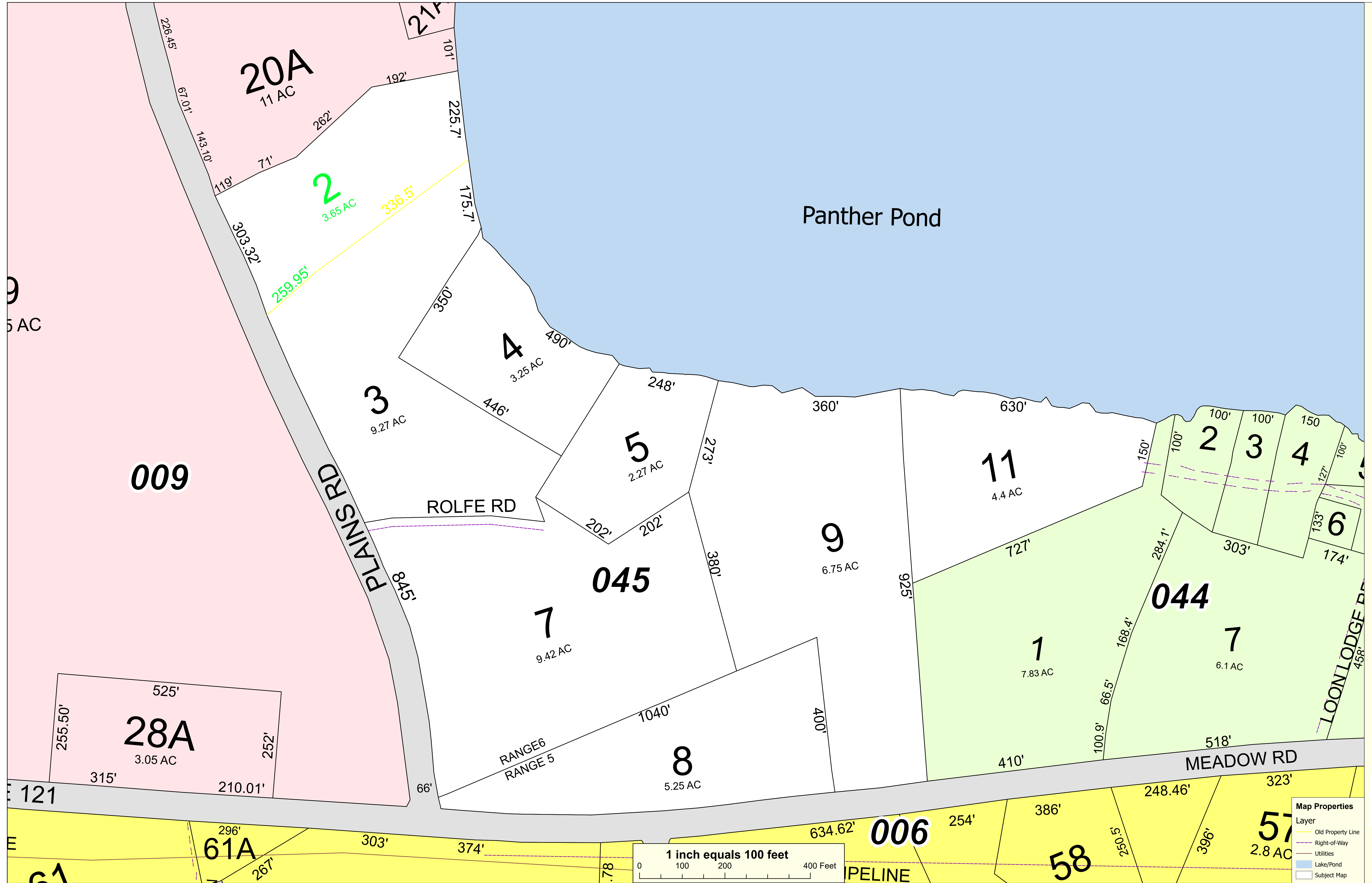
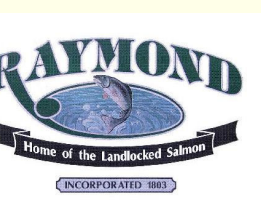


THIS MAP IS PREPARED FOR THE INVENTORY OF REAL PROPERTY AND THE TOWN OF RAYMOND AND IS COMPILED FROM RECORDED DEEDS, PLATS, TAX MAPS, SURVEYS, PLANIMETRIC MAPS, AND OTHER PUBLIC RECORDS AND DATA. USERS OF THIS TAX MAP ARE HEREBY NOTIFIED THAT THE FOREMENTIONED PUBLIC PRIMARY INFORMATION SOURCES SHOULD BE CONSULTED FOR VERIFICATION OF THE INFORMATION CONTAINED ON THIS MAP. THE TOWN OF RAYMOND AND ITS MAPPING CONTRACTORS ASSUME NO LEGAL RESPONSIBILITY FOR THE INFORMATION CONTAINED HEREIN.

**TOWN OF RAYMOND**  
**Cumberland County, Maine**  
**2021 Property Map**



Sources:  
 Raymond Assessors' Database  
 Maine Office of GIS  
 Prepared by:  
 Sebago Technics, Inc.  
 Effective Date: April 1, 2021



**Map Properties**

Layer	Description
	Old Property Line
	Right-of-Way
	Utilities
	Lake/Pond
	Subject Map