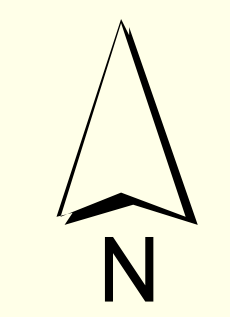


THIS MAP IS PREPARED FOR THE INVENTORY OF REAL PROPERTY AND IS COMPILED FROM RECORDED DEEDS, PLATS, TAX MAPS, SURVEYS, PLANIMETRIC MAPS AND OTHER PUBLIC RECORDS AND DATA. USERS OF THIS TAX MAP ARE HEREBY NOTIFIED THAT THE FOREMENTIONED PUBLIC PRIMARY INFORMATION SOURCES SHOULD BE CONSULTED FOR VERIFICATION OF THE INFORMATION CONTAINED HEREIN.

INFORMATION SOURCES SHOULD BE CONSULTED FOR VERIFICATION OF THE INFORMATION CONTAINED HEREIN. ASSUME NO LEGAL RESPONSIBILITY FOR THE INFORMATION CONTAINED HEREIN.

TOWN OF RAYMOND Cumberland County, Maine 2021 Property Map

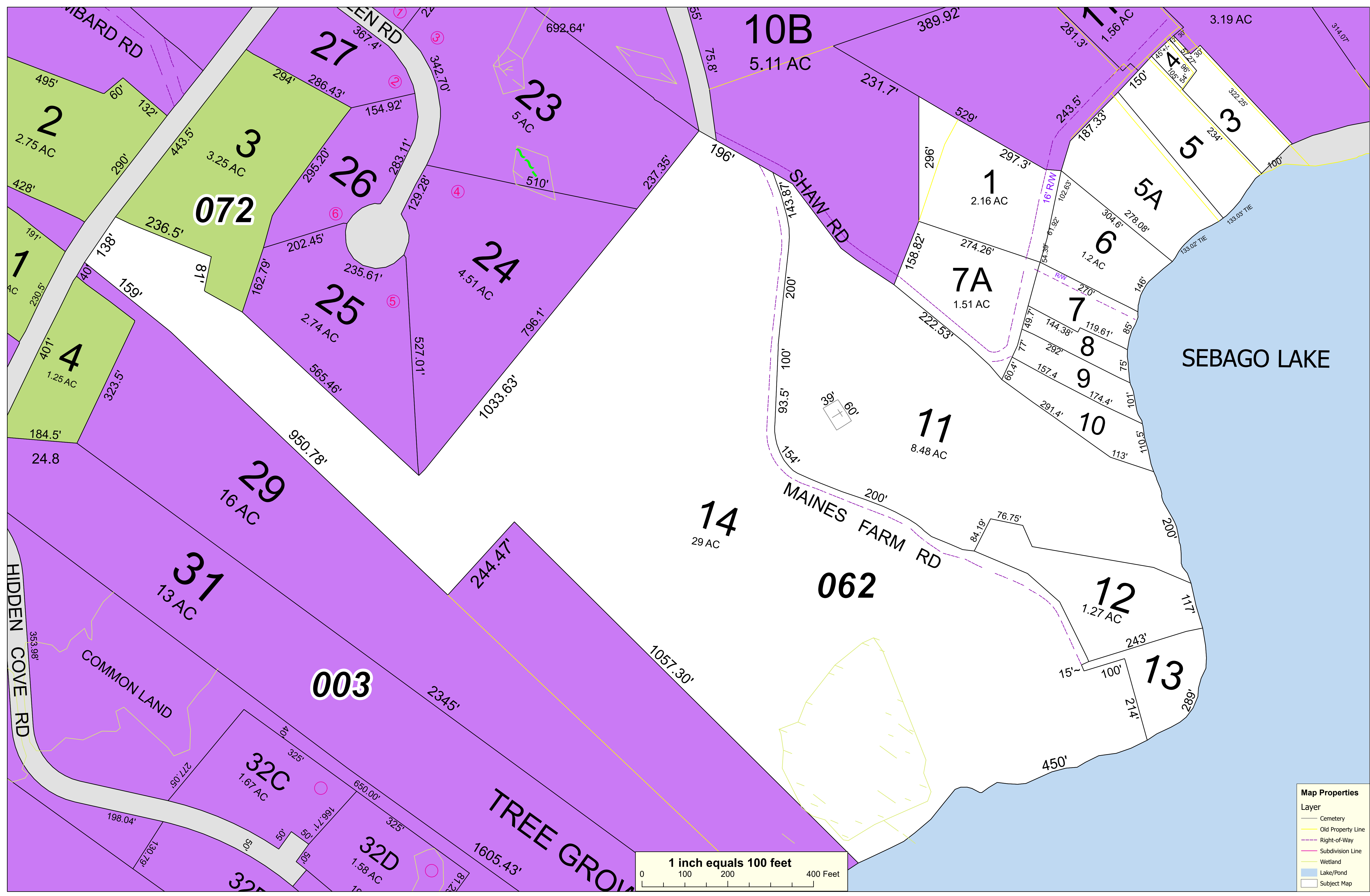
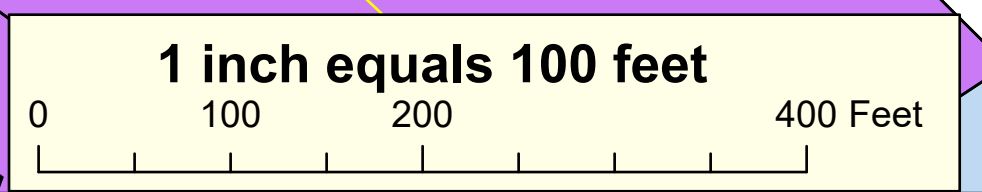


Sources:
Raymond Assessors' Database
Maine Office of GIS
Prepared by:
Sebago Technics, Inc.
Effective Date: April 1, 2021



Map 62

Map Properties	
Layer	
Cemetery	
Old Property Line	
Right-of-Way	
Subdivision Line	
Wetland	
Lake/Pond	
Subject Map	



WILBARD RD
HIDDEN COVE RD
COMMON LAND
TREE GROVE