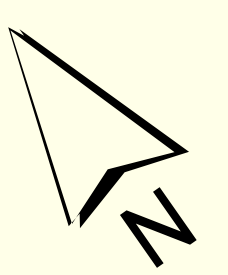


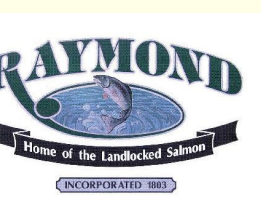
THIS MAP IS PREPARED FOR THE INVENTORY OF REAL PROPERTY AND THE TOWN OF RAYMOND AND IS COMPILED FROM RECORDED DEEDS, PLATS, TAX MAPS, SURVEYS, PLANIMETRIC MAPS, AND OTHER PUBLIC RECORDS AND DATA. USERS OF THIS TAX MAP ARE HEREBY NOTIFIED THAT THE FOREMENTIONED PUBLIC PRIMARY

INFORMATION SOURCES SHOULD BE CONSULTED FOR VERIFICATION OF THE INFORMATION CONTAINED ON THIS MAP. THE TOWN OF RAYMOND AND ITS MAPPING CONTRACTORS ASSUME NO LEGAL RESPONSIBILITY FOR THE INFORMATION CONTAINED HEREIN.

TOWN OF RAYMOND
Cumberland County, Maine
2022 Property Map

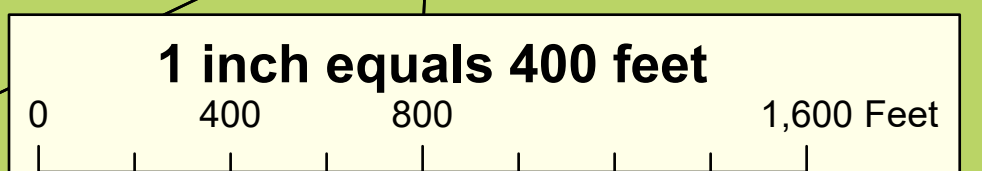
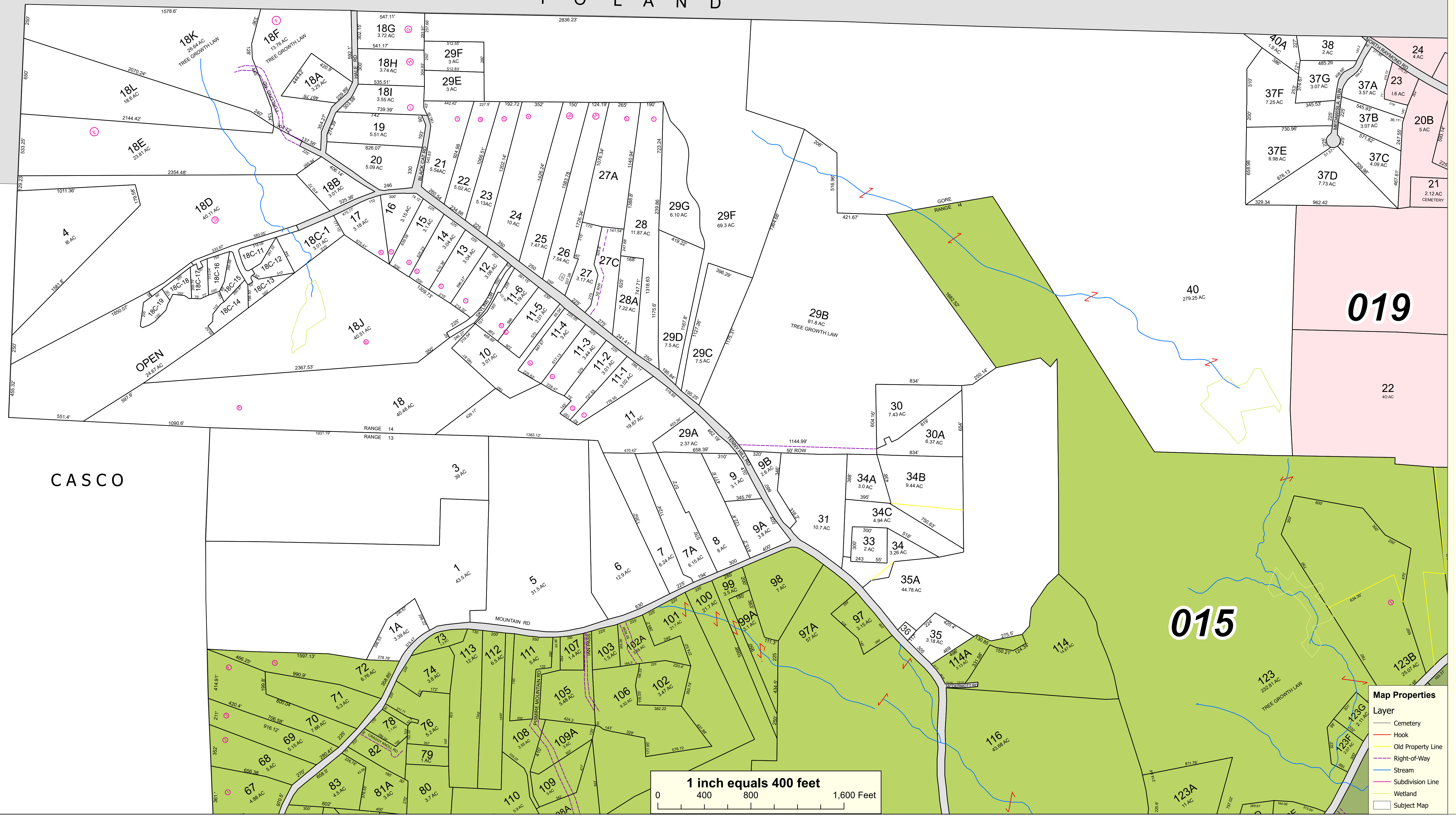


Sources:
 Raymond Assessors' Database
 Maine Office of GIS
 Prepared by:
 Sabago Technics, Inc.
 Effective Date: April 1, 2022



Map 18

P O L A N D



Map Properties

Layer	Color/Line Style
Cemetery	Pink
Hook	Red
Old Property Line	Yellow
Right-of-Way	Blue
Stream	Light Blue
Subdivision Line	Purple
Wetland	Green
Subject Map	Black

CASCO

019

015