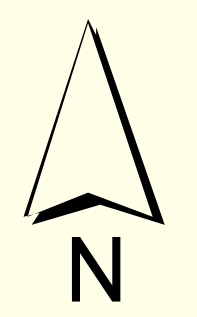


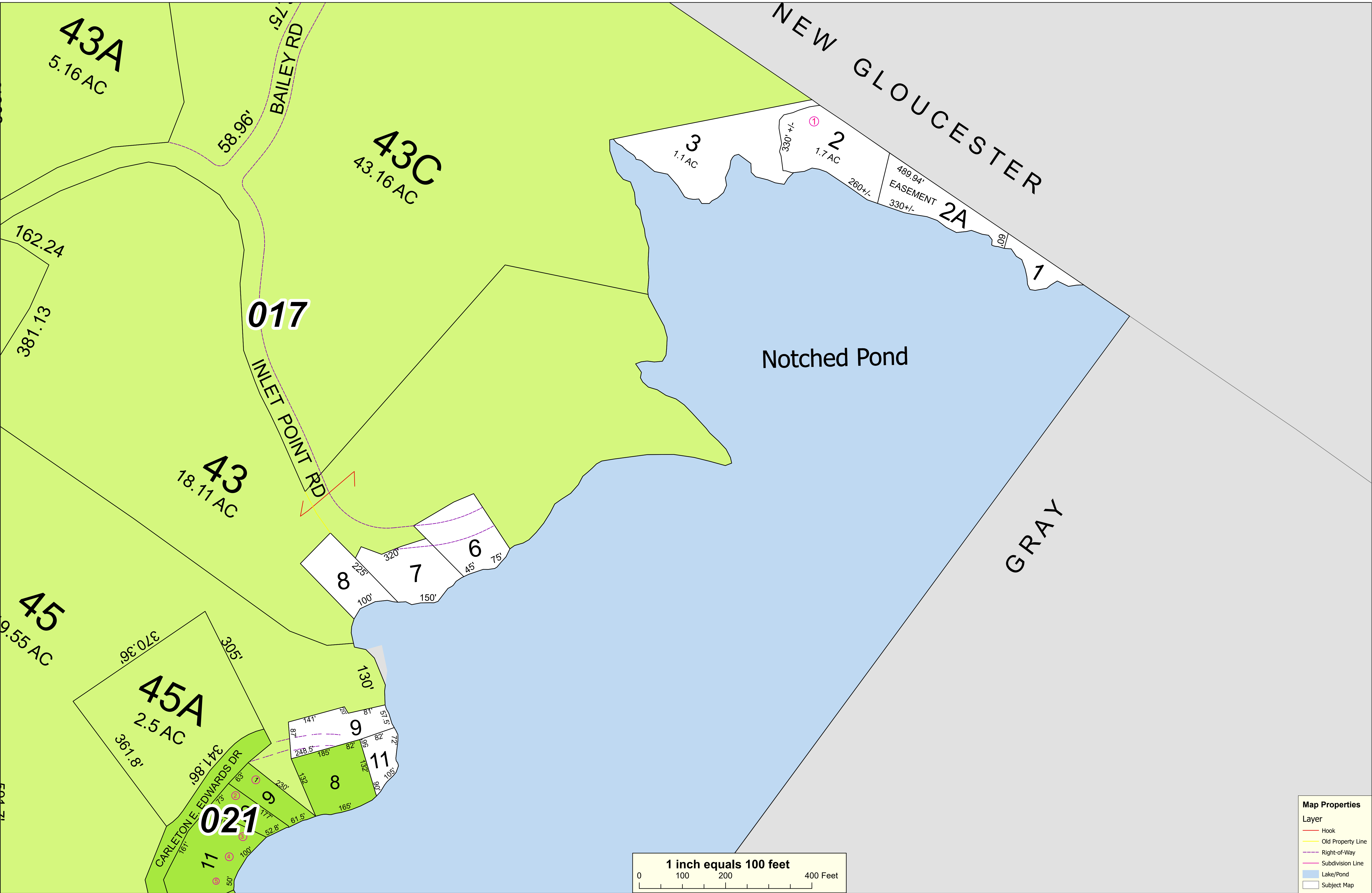
THIS MAP IS PREPARED FOR THE INVENTORY OF REAL PROPERTY AND THE TOWN OF RAYMOND AND IS COMPILED FROM RECORDED DEEDS, PLATS, TAX MAPS, SURVEYS, PLANIMETRIC MAPS, AND OTHER PUBLIC RECORDS AND DATA. USERS OF THIS TAX MAP ARE HEREBY NOTIFIED THAT THE FOREMENTIONED PUBLIC PRIMARY

INFORMATION SOURCES SHOULD BE CONSULTED FOR VERIFICATION OF THE DATA CONTAINED ON THIS MAP. THE TOWN OF RAYMOND AND ITS MAPPING CONTRACTORS ASSUME NO LEGAL RESPONSIBILITY FOR THE INFORMATION CONTAINED HEREIN.

TOWN OF RAYMOND
Cumberland County, Maine
2022 Property Map



Sources:
Raymond Assessors' Database
Maine Office of GIS
Prepared by:
Sabago Technics, Inc.
Effective Date: April 1, 2022



Map Properties

Layer

- Hook
- Old Property Line
- Right-of-Way
- Subdivision Line
- Lake/Pond
- Subject Map

