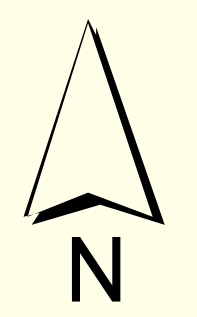


THIS MAP IS PREPARED FOR THE INVENTORY OF REAL PROPERTY AND IS COMPILED FROM RECORDED DEEDS, PLATS, TAX MAPS, SURVEYS, PLANIMETRIC MAPS, AND OTHER PUBLIC RECORDS AND DATA. USERS OF THIS TAX MAP ARE HEREBY NOTIFIED THAT THE FOREMENTIONED PUBLIC PRIMARY INFORMATION SOURCES SHOULD BE CONSULTED FOR VERIFICATION OF THE INFORMATION CONTAINED HEREIN.

INFORMATION SOURCES SHOULD BE CONSULTED FOR VERIFICATION OF THE INFORMATION CONTAINED HEREIN. THE TOWN OF RAYMOND AND ITS MAPPING CONTRACTORS ASSUME NO LEGAL RESPONSIBILITY FOR THE INFORMATION CONTAINED HEREIN.

### TOWN OF RAYMOND Cumberland County, Maine 2022 Property Map



Sources:  
Raymond Assessors' Database  
Maine Office of GIS  
Prepared by:  
Sabago Technics, Inc.  
Effective Date: April 1, 2022



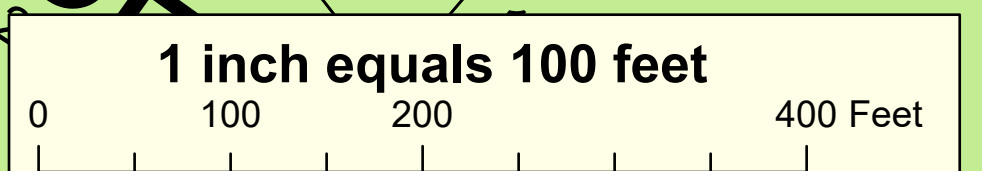
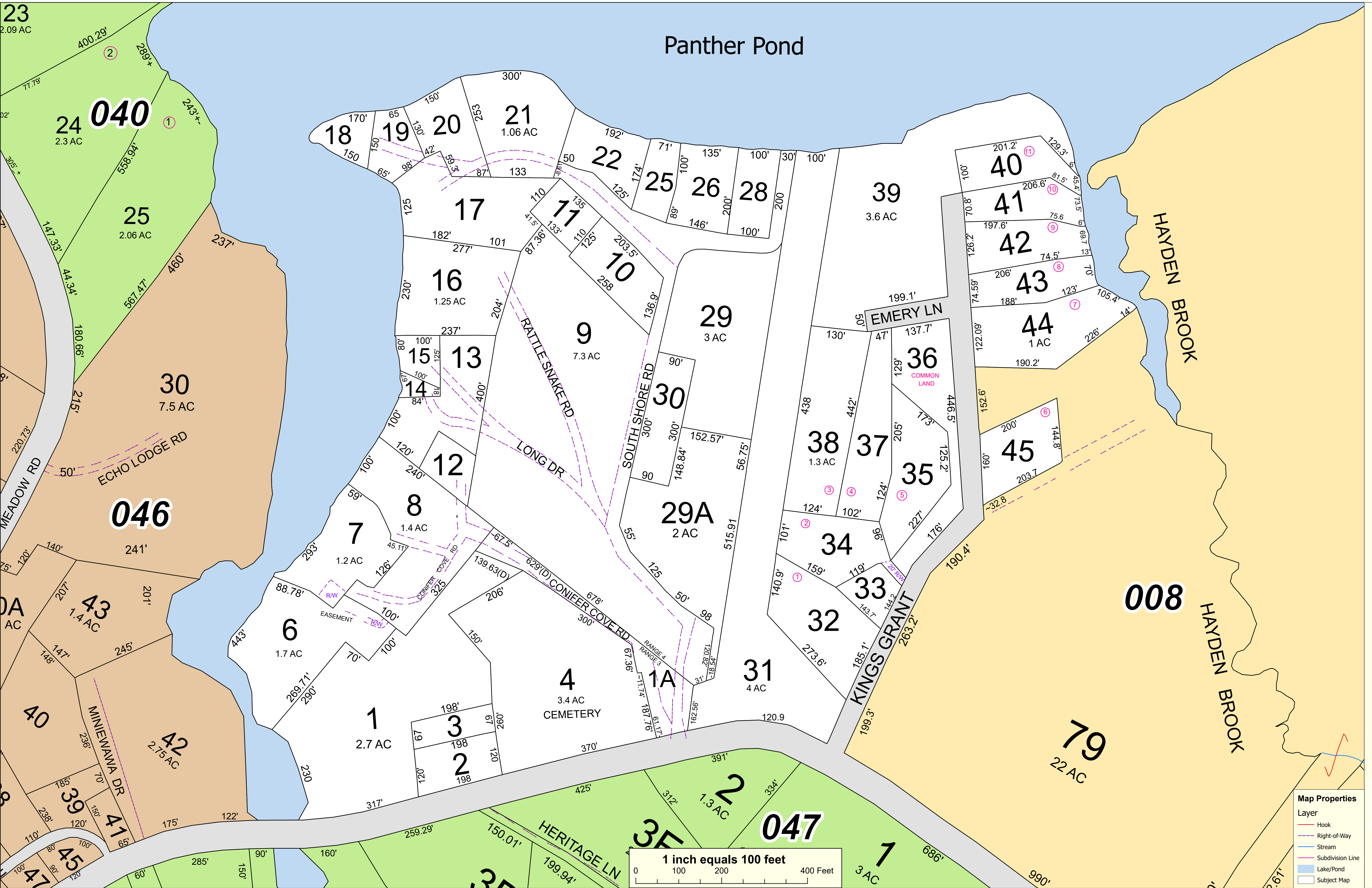
Map 39

## Panther Pond

## 008

HAYDEN BROOK

HAYDEN BROOK



Map Properties	
Layer	
	Hook
	Right-of-Way
	Stream
	Subdivision Line
	Lake/Pond
	Subject Map