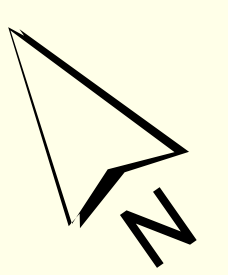
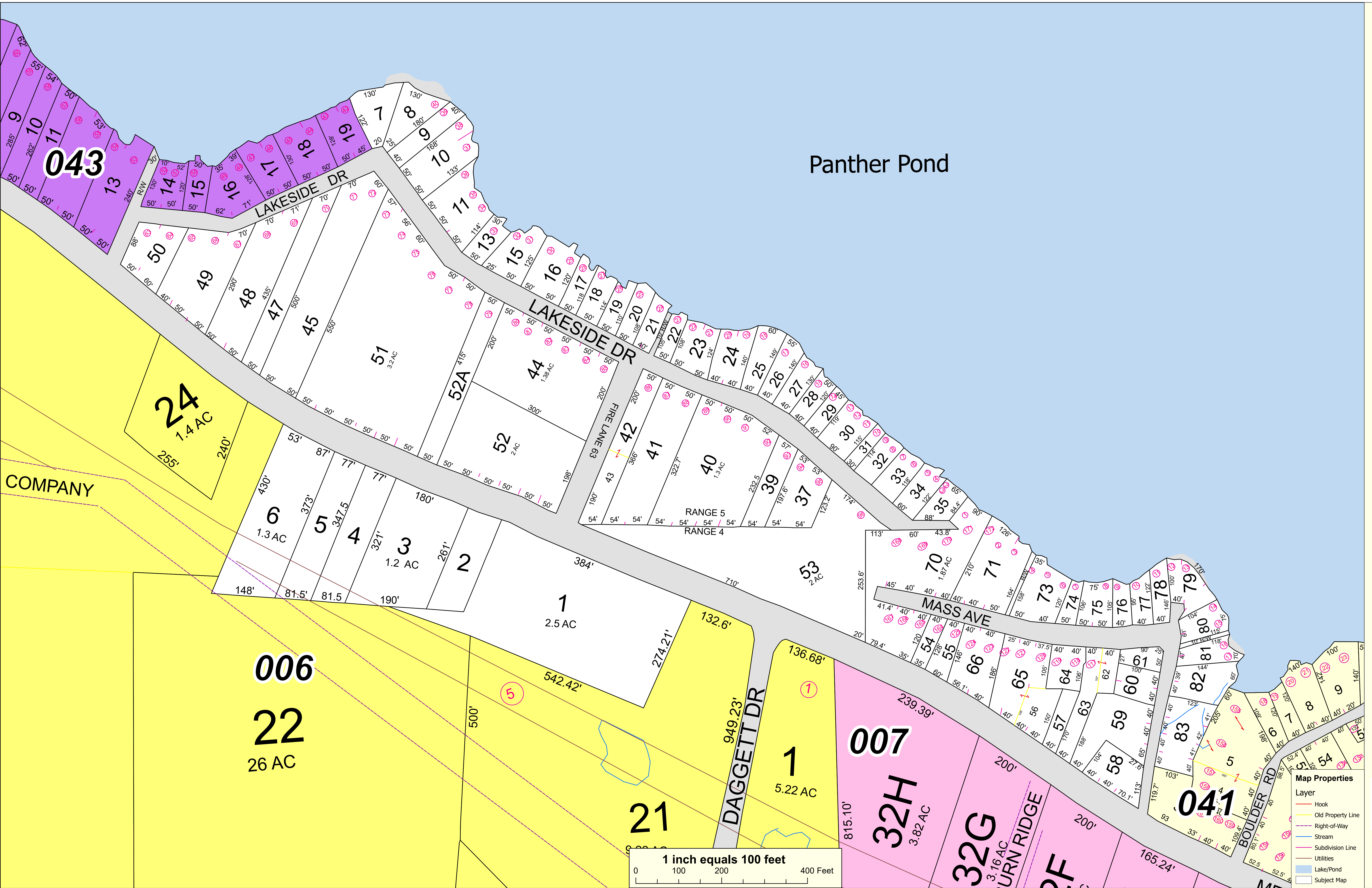
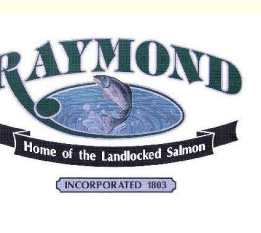


THIS MAP IS PREPARED FOR THE INVENTORY OF REAL PROPERTY AND IS COMPILED FROM RECORDED DEEDS, PLATS, TAX MAPS, SURVEYS, PLANIMETRIC MAPS, AND OTHER PUBLIC RECORDS AND DATA. USERS OF THIS TAX MAP ARE HEREBY NOTIFIED THAT THE FOREMENTIONED PUBLIC PRIMARY INFORMATION SOURCES SHOULD BE CONSULTED FOR VERIFICATION OF THE INFORMATION CONTAINED ON THIS MAP. THE TOWN OF RAYMOND ASSUMES NO LEGAL RESPONSIBILITY FOR THE INFORMATION CONTAINED HEREIN.

TOWN OF RAYMOND
Cumberland County, Maine
2022 Property Map



Sources:
 Raymond Assessors' Database
 Maine Office of GIS
 Prepared by:
 Sabajo Technical, Inc.
 Effective Date: April 1, 2022



Map Properties

Layer	Color/Style
Hook	Red line
Old Property Line	Yellow line
Right-of-Way	Purple line
Stream	Blue line
Subdivision Line	Pink line
Utilities	Grey line
Lake/Pond	Light Blue fill
Subject Map	White fill

