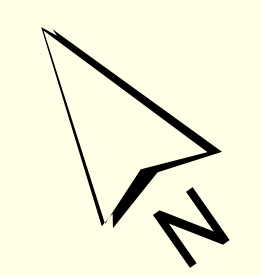


THIS MAP IS PREPARED FOR THE INVENTORY OF REAL PROPERTY AND THE PLANIMETRIC MAPS AND IS COMPILED FROM RECORDED DEEDS, PLATS, TAX MAPS, SURVEYS, PLANIMETRIC MAPS, AND OTHER PUBLIC RECORDS AND DATA. USERS OF THIS TAX MAP ARE HEREBY NOTIFIED THAT THE FOREMENTIONED PUBLIC PRIMARY

INFORMATION SOURCES SHOULD BE CONSULTED FOR VERIFICATION OF THE INFORMATION CONTAINED ON THIS MAP. THE TOWN OF RAYMOND AND ITS MAPPING CONTRACTORS ASSUME NO LEGAL RESPONSIBILITY FOR THE INFORMATION CONTAINED HEREIN.

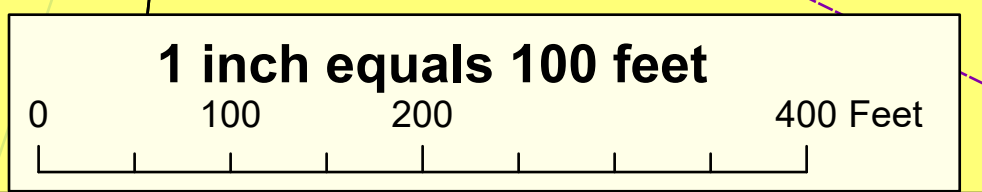
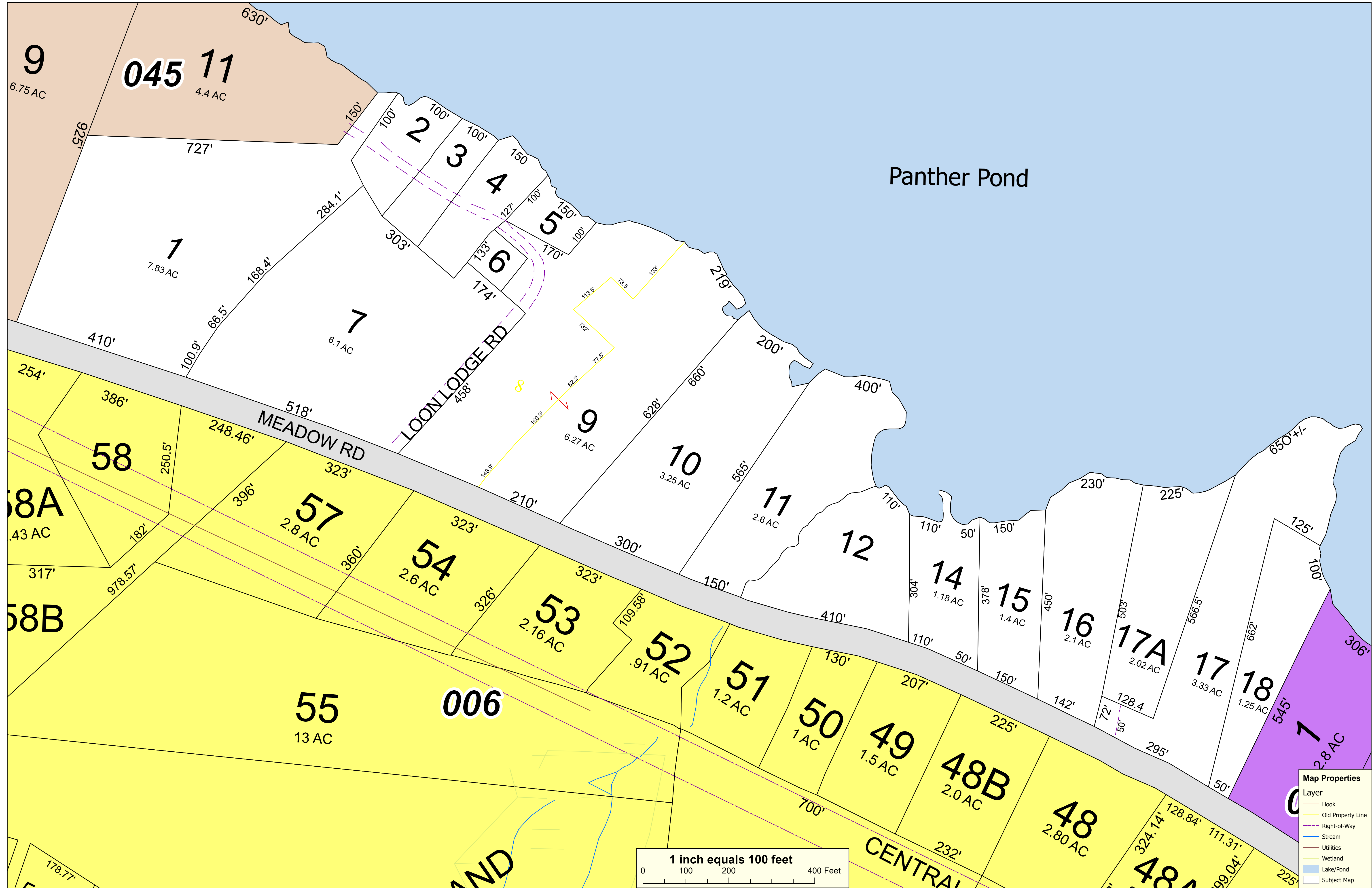
**TOWN OF RAYMOND**  
**Cumberland County, Maine**  
**2022 Property Map**



Sources:  
 Raymond Assessors' Database  
 Maine Office of GIS  
 Prepared by:  
 Sabago Technics, Inc.  
 Effective Date: April 1, 2022



**Map 44**



**Map Properties**

Layer	Color/Style
Hook	Red line
Old Property Line	Yellow line
Right-of-Way	Purple dashed line
Stream	Blue line
Utilities	Orange line
Wetland	Light blue shaded area
Lake/Pond	Light blue shaded area
Subject Map	White background