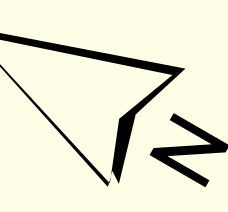
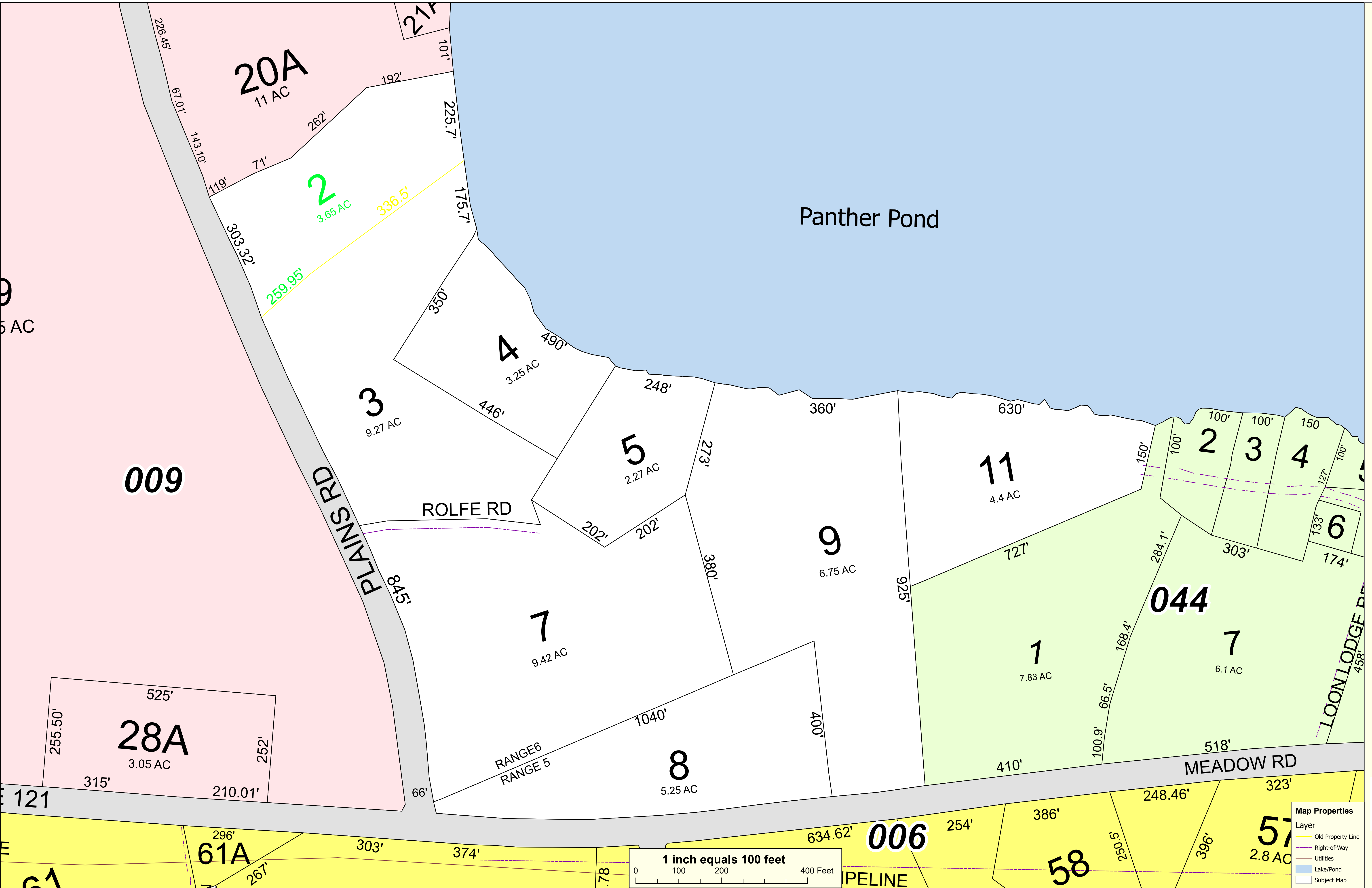


THIS MAP IS PREPARED FOR THE INVENTORY OF REAL PROPERTY AND THE TOWN OF RAYMOND AND IS COMPILED FROM RECORDED DEEDS, PLATS, TAX MAPS, SURVEYS, PLANIMETRIC MAPS, AND OTHER PUBLIC RECORDS AND DATA. USERS OF THIS TAX MAP ARE HEREBY NOTIFIED THAT THE FOREMENTIONED PUBLIC PRIMARY INFORMATION SOURCES SHOULD BE CONSULTED FOR VERIFICATION OF THE INFORMATION CONTAINED ON THIS MAP. THE TOWN OF RAYMOND AND ITS MAPPING CONTRACTORS ASSUME NO LEGAL RESPONSIBILITY FOR THE INFORMATION CONTAINED HEREIN.

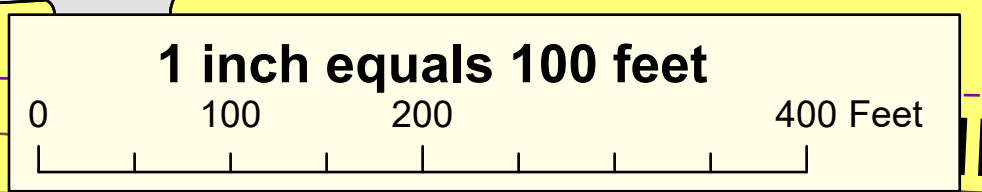
**TOWN OF RAYMOND**  
Cumberland County, Maine  
2022 Property Map



Sources:  
Raymond Assessors Database  
Maine Office of GIS  
Prepared by:  
Sabago Technics, Inc.  
Effective Date: April 1, 2022



Map Properties	
Layer	
Old Property Line	—
Right-of-Way	- - -
Utilities	---
Lake/Pond	Blue Area
Subject Map	Black Outline



E 121  
E 61

61A

006

58

57  
2.8 AC