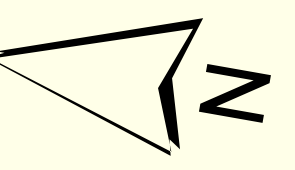


THIS MAP IS PREPARED FOR THE INVENTORY OF REAL PROPERTY AND THE PLANNING AND IS COMPILED FROM RECORDED DEEDS, PLATS, TAX MAPS, SURVEYS, PLANIMETRIC MAPS AND OTHER PUBLIC RECORDS AND DATA. USERS OF THIS TAX MAP ARE HEREBY NOTIFIED THAT THE AFOREMENTIONED PUBLIC PRIMARY

INFORMATION SOURCES SHOULD BE CONSULTED FOR VERIFICATION OF THE INFORMATION CONTAINED IN THIS MAP. THE TOWN OF RAYMOND AND ITS MAPPING CONTRACTORS ASSUME NO LEGAL RESPONSIBILITY FOR THE INFORMATION CONTAINED HEREIN.

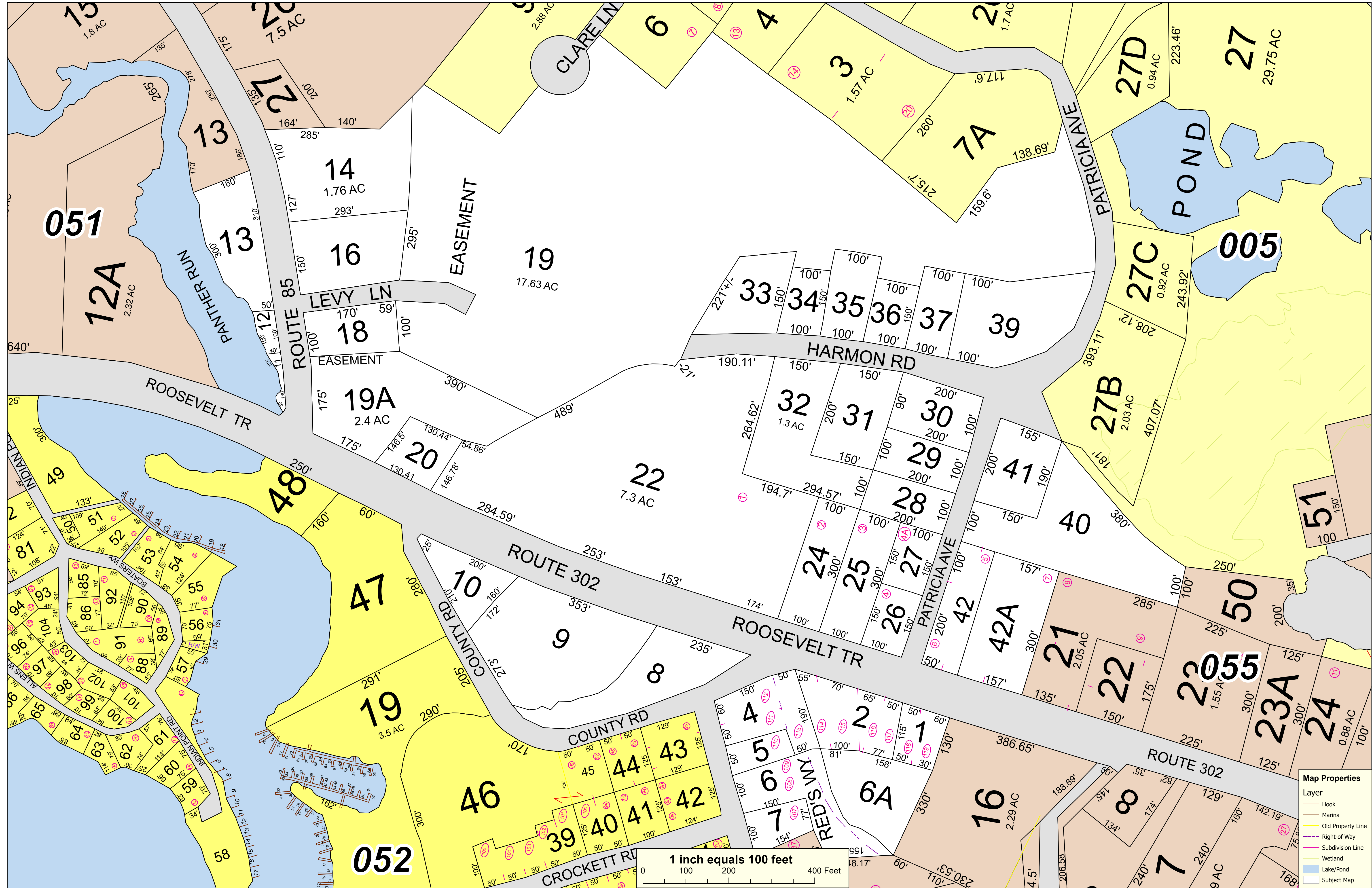
TOWN OF RAYMOND
Cumberland County, Maine
2022 Property Map



Sources:
Raymond Assessors' Database
Maine Office of GIS
Prepared by:
Sabago Technics, Inc.
Effective Date: April 1, 2022



Map 53



Map Properties

Layer	Color
Hook	Red
Marina	Blue
Old Property Line	Yellow
Right-of-Way	Grey
Subdivision Line	Purple
Wetland	Light Green
Lake/Pond	Blue
Subject Map	White