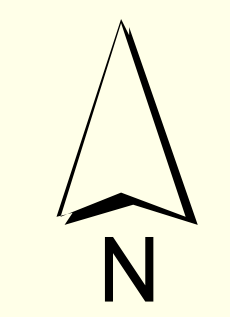


THIS MAP IS PREPARED FOR THE INVENTORY OF REAL PROPERTY AND THE PLANNING AND IS COMPILED FROM RECORDED DEEDS, PLATS, TAX MAPS, SURVEYS, PLANIMETRIC MAPS, AND OTHER PUBLIC RECORDS AND DATA. USERS OF THIS TAX MAP ARE HEREBY NOTIFIED THAT THE FOREMENTIONED PUBLIC PRIMARY

INFORMATION SOURCES SHOULD BE CONSULTED FOR VERIFICATION OF THE INFORMATION CONTAINED IN THIS MAP. THE TOWN OF RAYMOND AND ITS MAPPING CONTRACTORS ASSUME NO LEGAL RESPONSIBILITY FOR THE INFORMATION CONTAINED HEREIN.

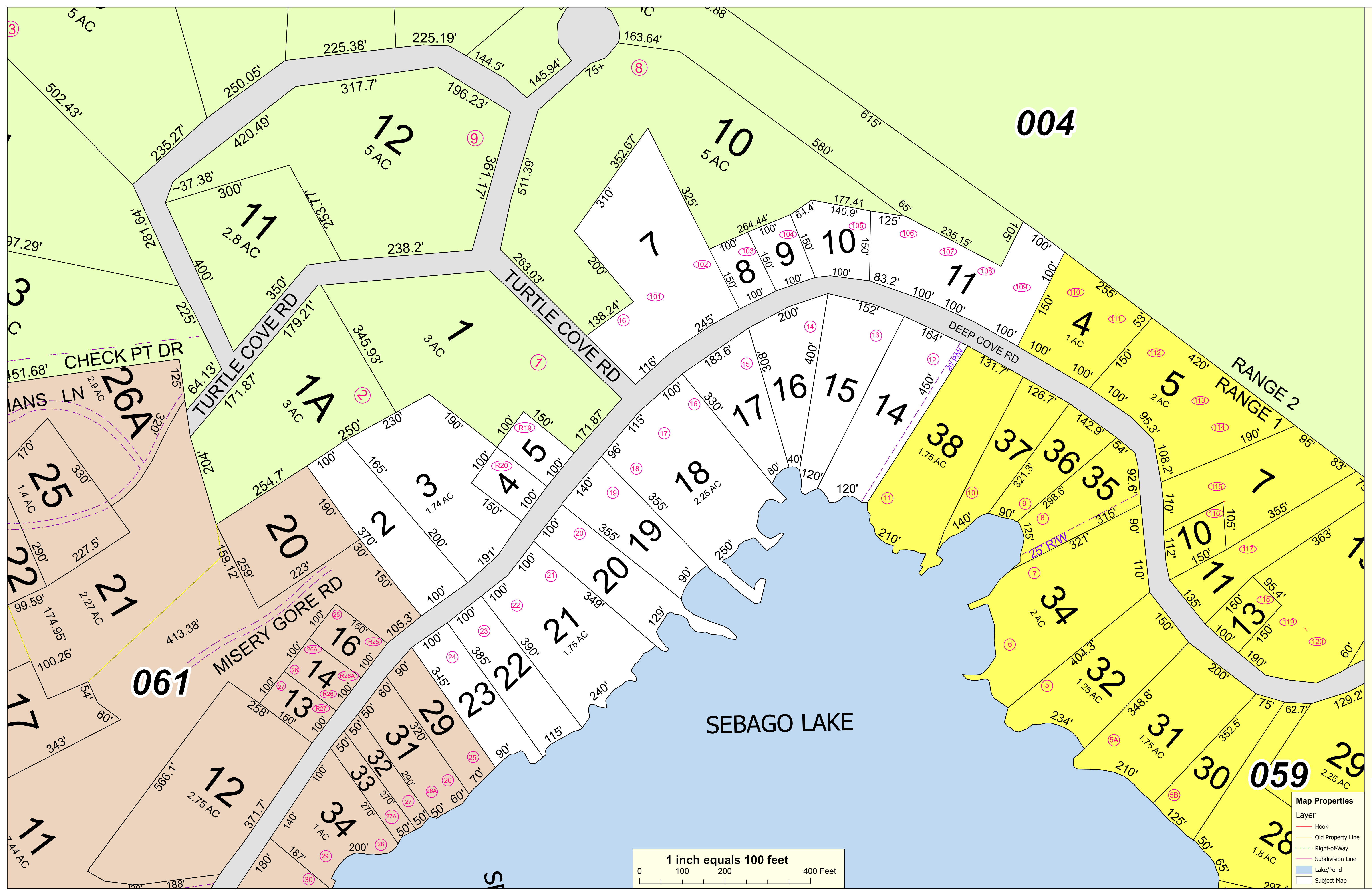
**TOWN OF RAYMOND**  
**Cumberland County, Maine**  
**2022 Property Map**



Sources:  
 Raymond Assessors' Database  
 Maine Office of GIS  
 Prepared by:  
 Sebago Technics, Inc.  
 Effective Date: April 1, 2022



**Map 60**



**Map Properties**

| Layer             | Color/Line Style   |
|-------------------|--------------------|
| Hook              | Red line           |
| Old Property Line | Yellow line        |
| Right-of-Way      | Dashed purple line |
| Subdivision Line  | Pink line          |
| Lake/Pond         | Blue fill          |
| Subject Map       | White fill         |

