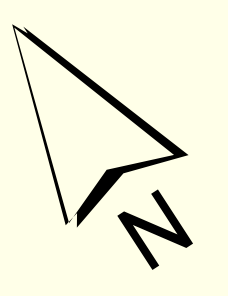


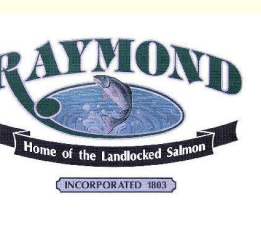
THIS MAP IS PREPARED FOR THE INVENTORY OF REAL PROPERTY AND IS COMPILED FROM RECORDED DEEDS, PLATS, TAX MAPS, SURVEYS, PLANIMETRIC MAPS, AND OTHER PUBLIC RECORDS AND DATA. USERS OF THIS TAX MAP ARE HEREBY NOTIFIED THAT THE FOREMENTIONED PUBLIC PRIMARY INFORMATION SOURCES SHOULD BE CONSULTED FOR VERIFICATION OF THE INFORMATION CONTAINED HEREIN.

INFORMATION SOURCES SHOULD BE CONSULTED FOR VERIFICATION OF THE INFORMATION CONTAINED HEREIN. THE TOWN OF RAYMOND AND ITS MAPPING CONTRACTORS ASSUME NO LEGAL RESPONSIBILITY FOR THE INFORMATION CONTAINED HEREIN.

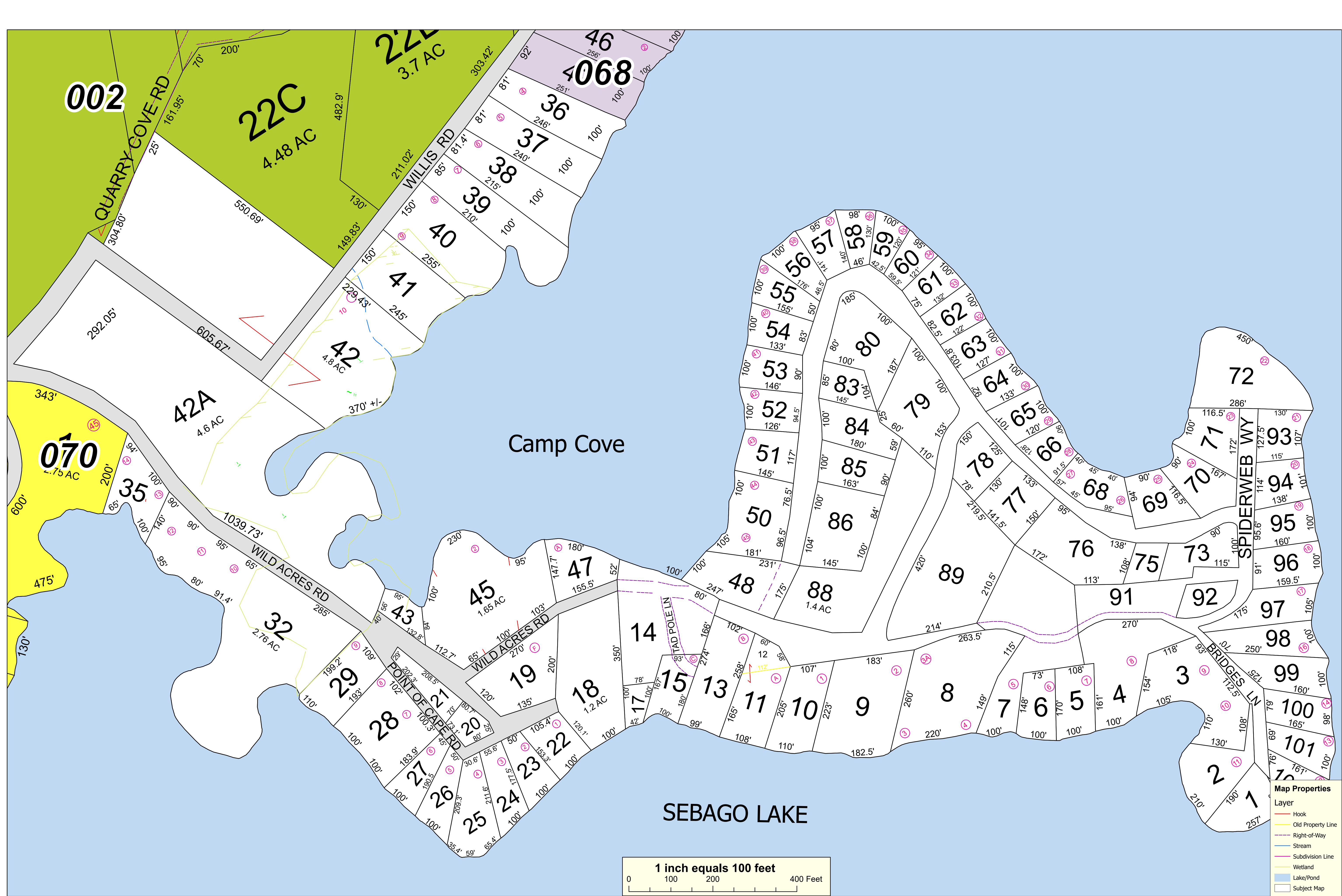
TOWN OF RAYMOND
Cumberland County, Maine
2022 Property Map



Sources:
 Raymond Assessors' Database
 Maine Office of GIS
 Prepared by:
 Sebago Technics, Inc.
 Effective Date: April 1, 2022



Map 69



Map Properties

Layer	Color/Style
Hook	Red line
Old Property Line	Yellow line
Right-of-Way	Purple dashed line
Stream	Blue line
Subdivision Line	Pink line
Wetland	Light green fill
Lake/Pond	Light blue fill
Subject Map	White fill

