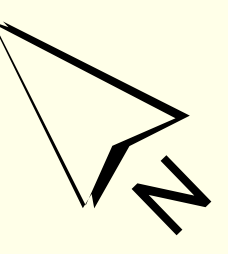
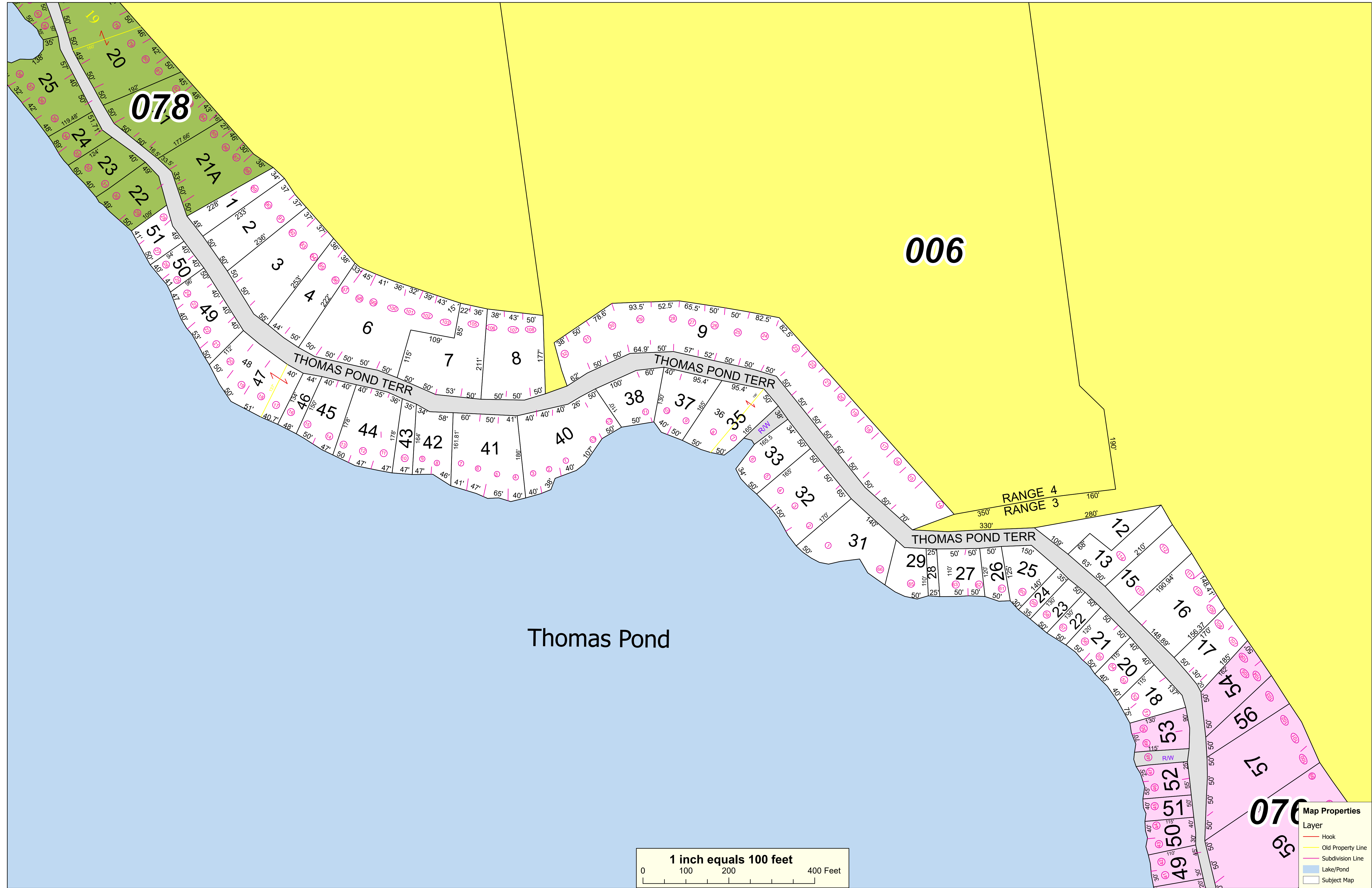
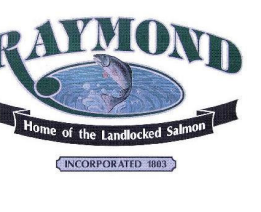


THIS MAP IS PREPARED FOR THE INVENTORY OF REAL PROPERTY AND THE TOWN OF RAYMOND AND IS COMPILED FROM RECORDED DEEDS, PLATS, TAX MAPS, SURVEYS, PLANIMETRIC MAPS AND OTHER PUBLIC RECORDS AND DATA. USERS OF THIS TAX MAP ARE HEREBY NOTIFIED THAT THE FOREMENTIONED PUBLIC PRIMARY INFORMATION SOURCES SHOULD BE CONSULTED FOR VERIFICATION OF THE INFORMATION CONTAINED ON THIS MAP. THE TOWN OF RAYMOND AND ITS MAPPING CONTRACTORS ASSUME NO LEGAL RESPONSIBILITY FOR THE INFORMATION CONTAINED HEREIN.

TOWN OF RAYMOND
Cumberland County, Maine
2022 Property Map



Sources:
 Raymond Assessors Database
 Maine Office of GIS
 Prepared by:
 Sebago Technics, Inc.
 Effective Date: April 1, 2022



Map Properties

Layer	
	Hook
	Old Property Line
	Subdivision Line
	Lake/Pond
	Subject Map

