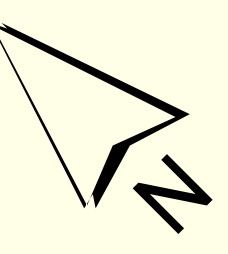


THIS MAP IS PREPARED FOR THE INVENTORY OF REAL PROPERTY WITHIN THE TOWN OF RAYMOND AND IS COMPILED FROM RECORDED DEEDS, PLATS, TAX MAPS, SURVEYS, PLANNING, ETC. MAPS AND OTHER AVAILABLE RECORDS AND DATA. THE TOWN OF RAYMOND ASSUMES NO LEGAL RESPONSIBILITY FOR THE INFORMATION CONTAINED HEREIN. THAT THE AFOREMENTIONED PUBLIC PRIMARY INFORMATION SOURCES SHOULD BE CONSULTED FOR VERIFICATION OF THE INFORMATION CONTAINED ON THIS MAP. THE TOWN OF RAYMOND AND ITS MAPPING CONTRACTORS ASSUME NO LEGAL RESPONSIBILITY FOR THE INFORMATION CONTAINED HEREIN.

TOWN OF RAYMOND  
Cumberland County, Maine  
2024 Property Map



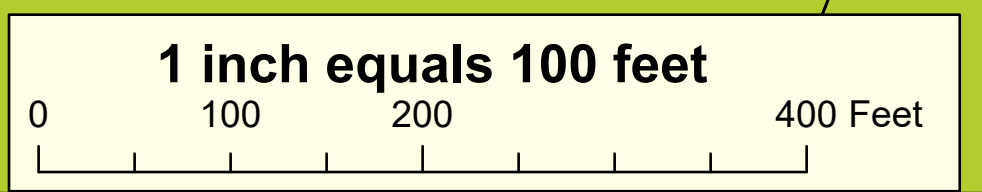
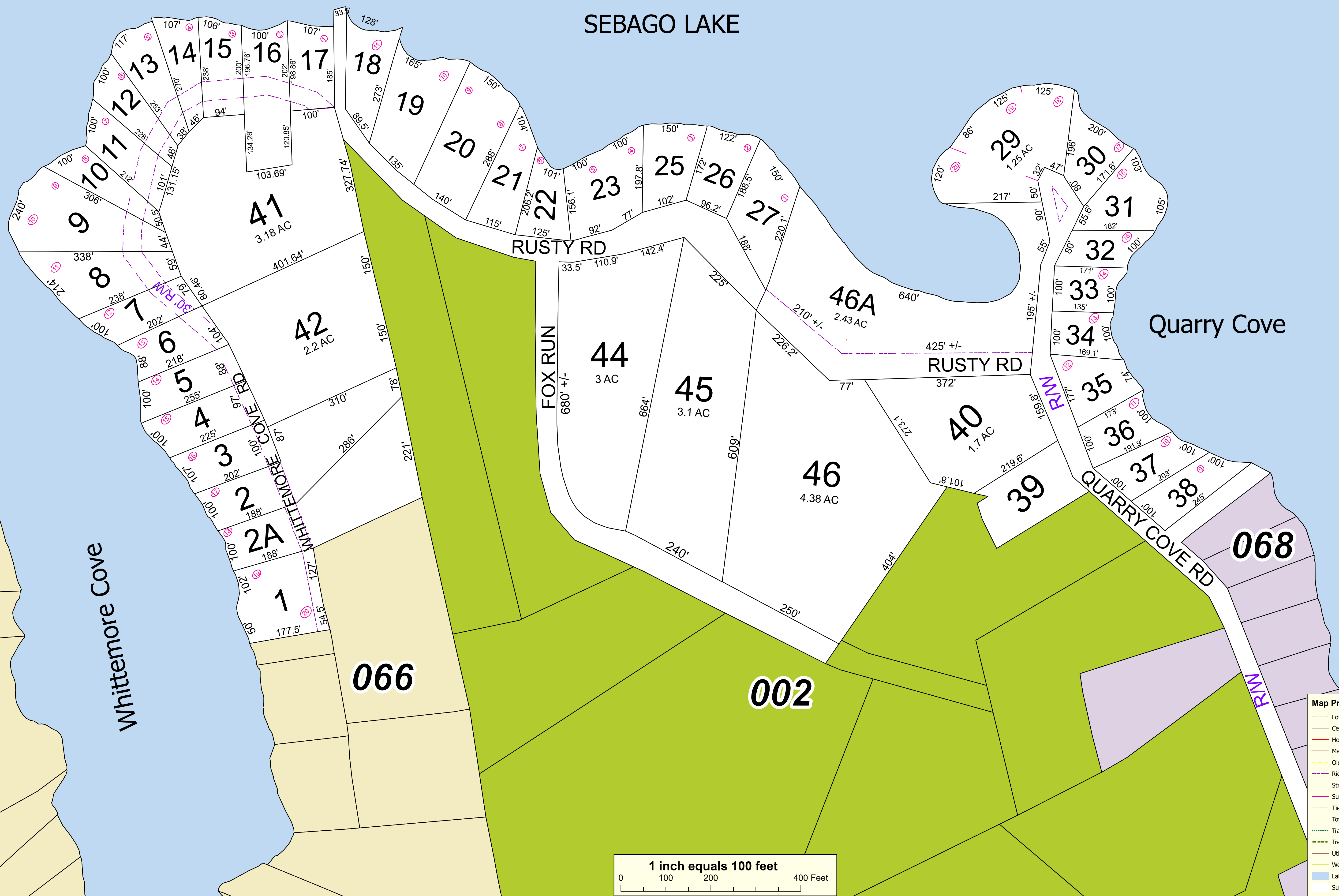
Sources:  
Raymond Assessor's Database  
Maine Office of GIS  
Prepared by:  
**SEBAGO**  
Town of Raymond, Maine  
Effective Date: April 1, 2024



SEBAGO LAKE

Quarry Cove

Whittemore Cove



- Map Properties**
- Low Water Mark
  - Cemetery
  - Hook
  - Marina
  - Old Property Line
  - Right-of-Way
  - Stream
  - Subdivision Line
  - Tie line
  - Town Boundary
  - Trail
  - Tree Growth Line
  - Utilities
  - Wetland
  - Lake/Pond
  - Subject Map