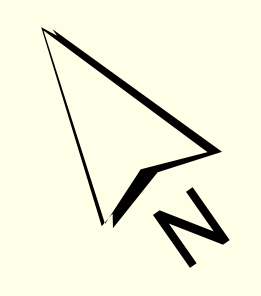
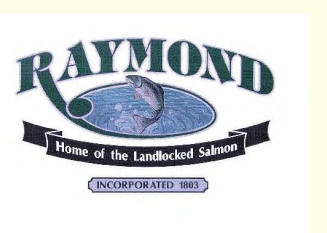


THIS MAP IS PREPARED FOR THE INVENTORY OF REAL PROPERTY WITHIN THE TOWN OF RAYMOND AND IS COMPILED FROM RECORDED DEEDS, PLATS, TAX MAPS, SURVEYS, PLANNING RECORDS, AND OTHER AVAILABLE RECORDS AND DATA. THE TOWN OF RAYMOND ASSUMES NO LEGAL RESPONSIBILITY FOR THE INFORMATION CONTAINED HEREIN. THAT THE AFOREMENTIONED PUBLIC PRIMARY INFORMATION SOURCES SHOULD BE CONSULTED FOR VERIFICATION OF THE INFORMATION CONTAINED ON THIS MAP. THE TOWN OF RAYMOND AND ITS MAPPING CONTRACTORS ASSUME NO LEGAL RESPONSIBILITY FOR THE INFORMATION CONTAINED HEREIN.

TOWN OF RAYMOND
Cumberland County, Maine
2025 Property Map

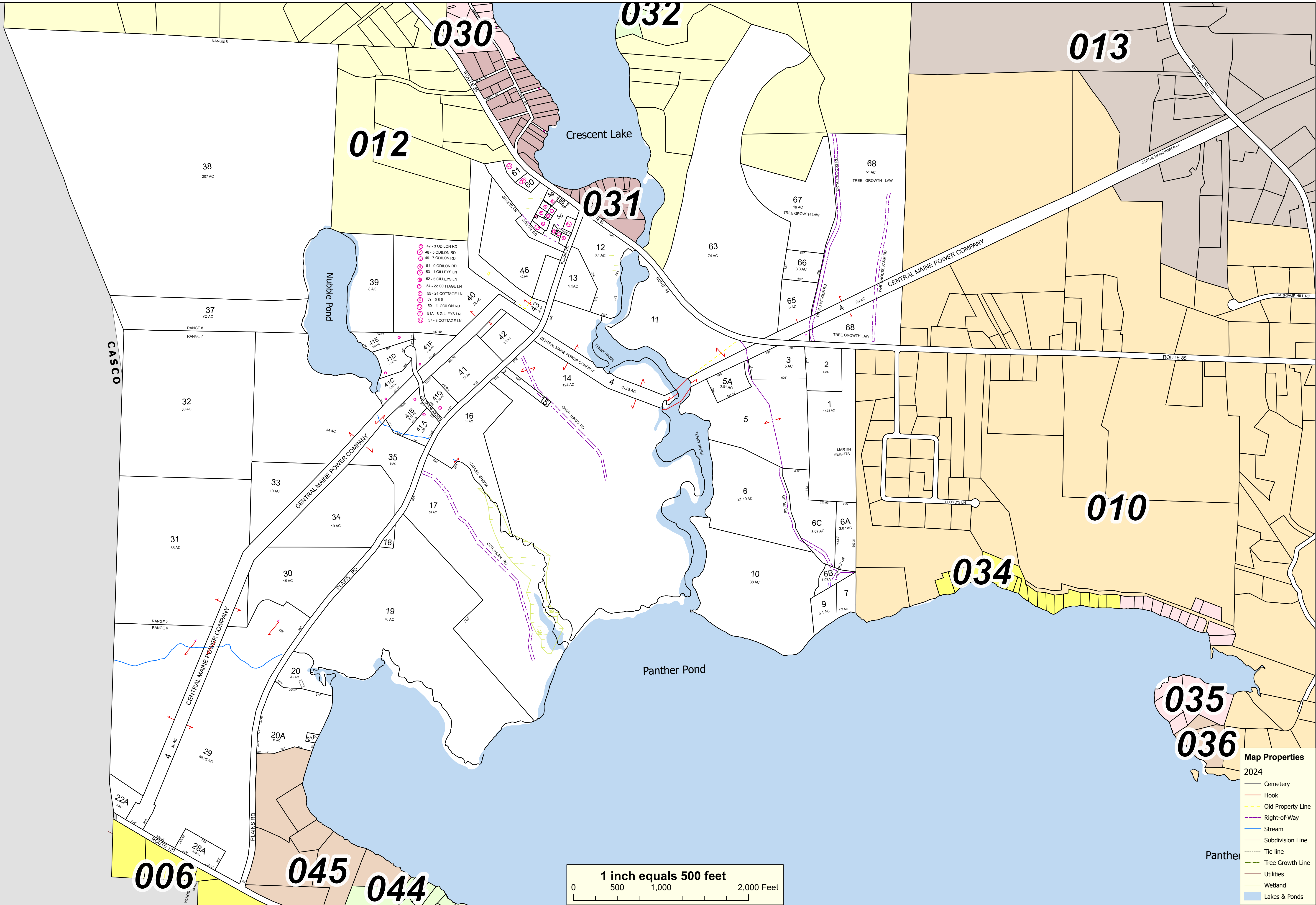
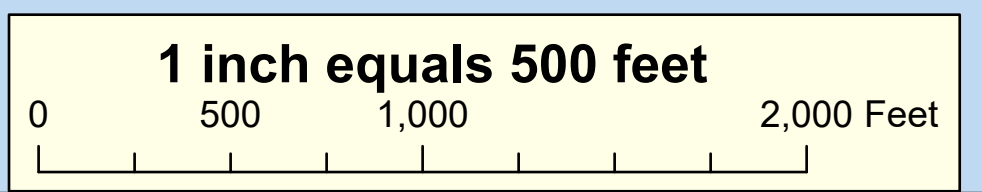


Sources:
 Raymond Assessor's Database
 Maine Office of GIS
 Prepared by:
SEBAGO
 Effective Date: April 1, 2024



Map 09

- Map Properties**
 2024
- Cemetery
 - Hook
 - Old Property Line
 - Right-of-Way
 - Stream
 - Subdivision Line
 - Tie line
 - Tree Growth Line
 - Utilities
 - Wetland
 - Lakes & Ponds



- 47 - 3 OODLON RD
- 48 - 5 OODLON RD
- 49 - 7 OODLON RD
- 51 - 9 OODLON RD
- 53 - 1 GILLEY'S LN
- 52 - 5 GILLEY'S LN
- 54 - 22 COTTAGE LN
- 55 - 24 COTTAGE LN
- 56 - 5 B B
- 50 - 11 OODLON RD
- 51A - 8 GILLEY'S LN
- 57 - 3 COTTAGE LN