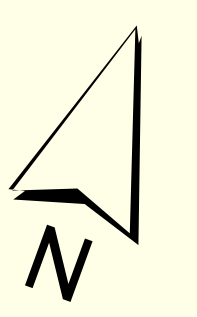


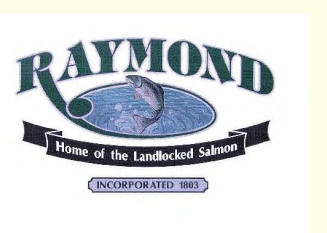
THIS MAP IS PREPARED FOR THE INVENTORY OF REAL PROPERTY WITHIN THE TOWN OF RAYMOND AND IS COMPILED FROM RECORDED DEEDS, PLATS, TAX MAPS, SURVEYS, PLANNING AND ENGINEERING RECORDS AND OTHER PUBLIC RECORDS AND DATA SOURCES. THE TOWN OF RAYMOND ASSUMES NO LEGAL RESPONSIBILITY FOR THE INFORMATION CONTAINED HEREIN.

INFORMATION SOURCES SHOULD BE CONSULTED FOR VERIFICATION OF THE INFORMATION CONTAINED ON THIS MAP. THE TOWN OF RAYMOND AND ITS MAPPING CONTRACTORS ASSUME NO LEGAL RESPONSIBILITY FOR THE INFORMATION CONTAINED HEREIN.

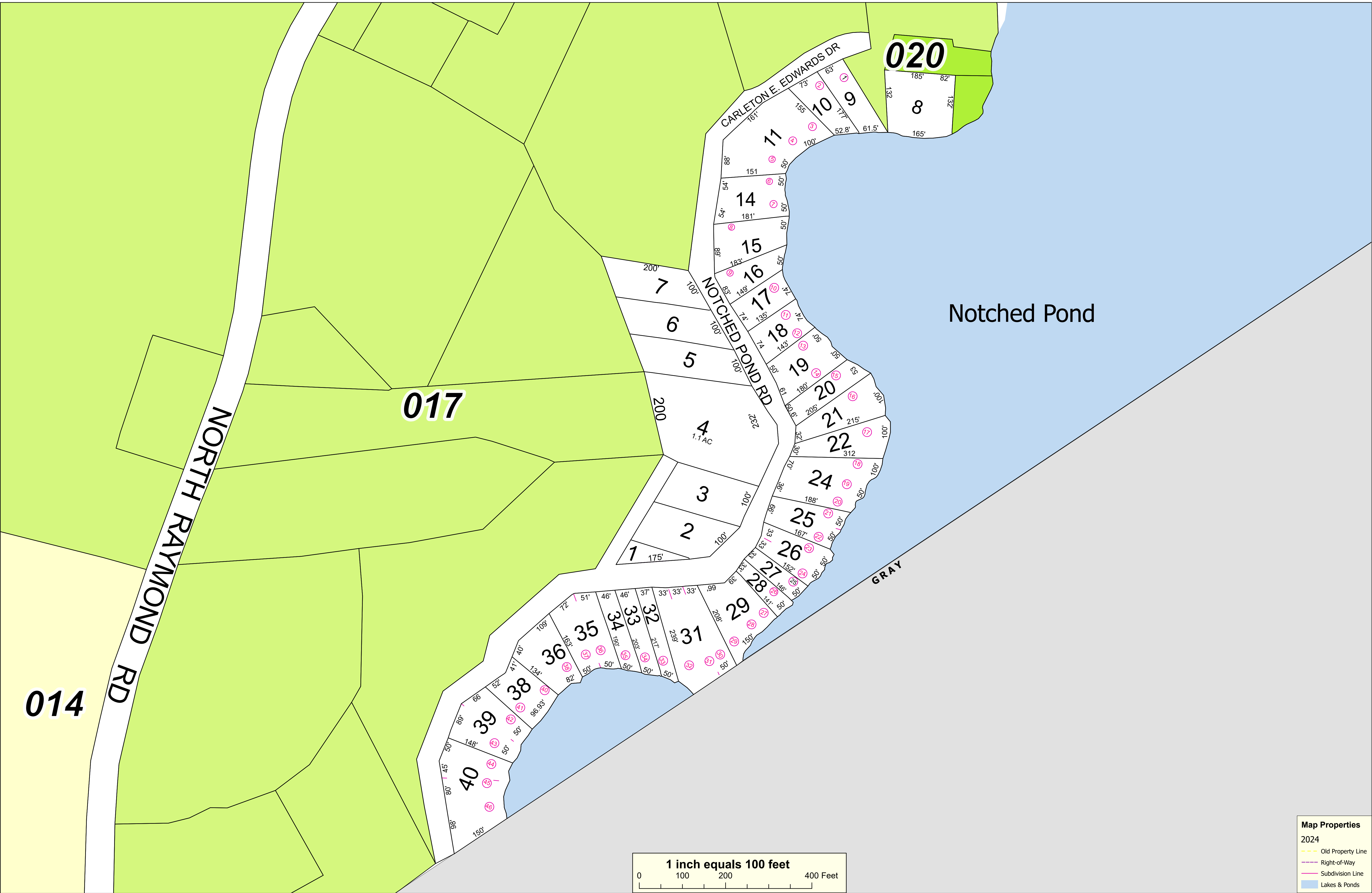
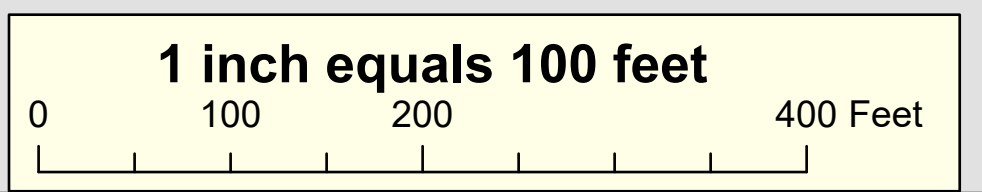
TOWN OF RAYMOND
Cumberland County, Maine
2025 Property Map



Sources:
 Raymond Assessor's Database
 Maine Office of GIS
SEBAGO
 Prepared by:
 Effective Date: April 1, 2024



- Map Properties**
- 2024
 - Old Property Line
 - Right-of-Way
 - Subdivision Line
 - Lakes & Ponds



020

017

014

Notched Pond

NORTH RAYMOND RD

CARLETON E. EDWARDS DR

NOTCHED POND RD

GRAY

1.1 AC