



The Lake Region Greenprint: A Community Partnership

Regional Conservation Priorities

Focus on Town of Raymond

Legend

Regional Conservation Priorities

High Priority

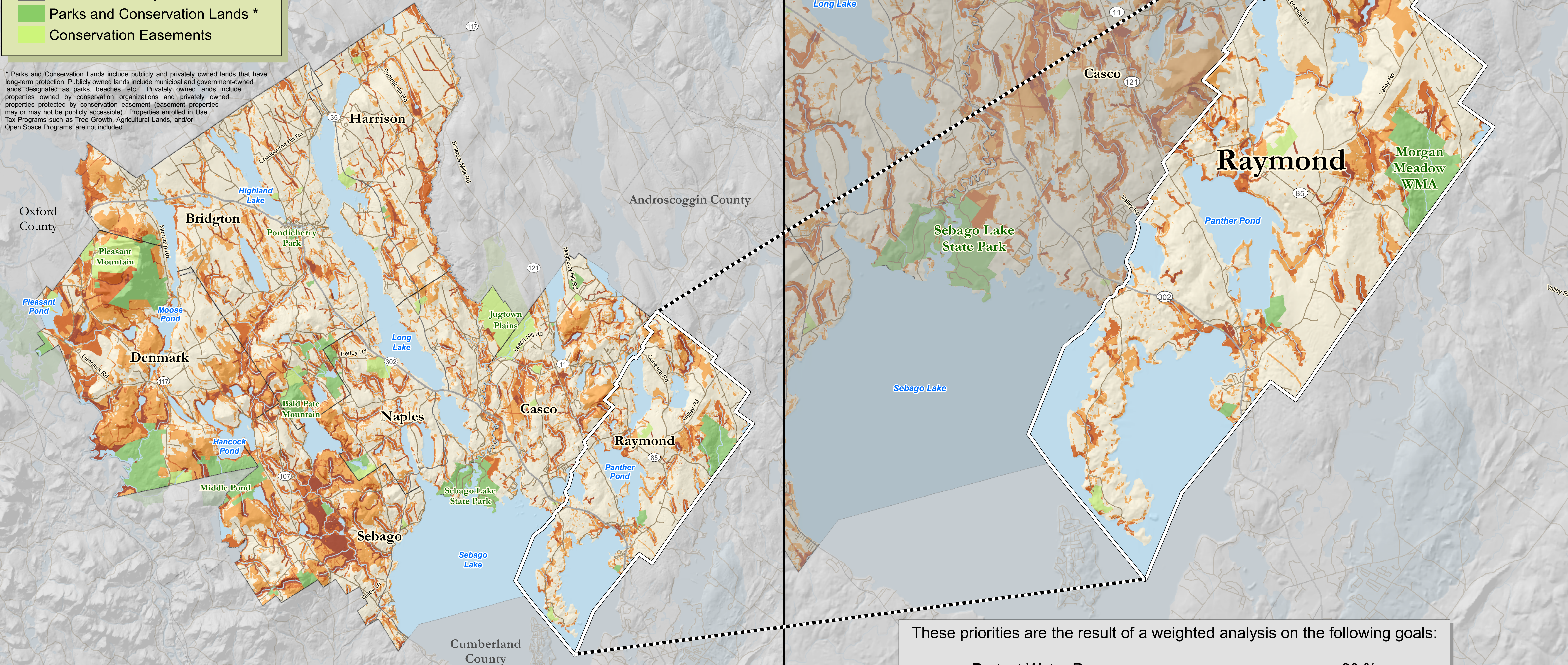
Moderate-High Priority

Moderate Priority

Parks and Conservation Lands *

Conservation Easements

* Parks and Conservation Lands include publicly and privately owned lands that have long-term protection. Publicly owned lands include municipal and government-owned lands designated as parks, beaches, etc. Privately owned lands include properties owned by conservation organizations and privately owned properties protected by conservation easement (easement properties may or may not be publicly accessible). Properties enrolled in Use Tax Programs such as Tree Growth, Agricultural Lands, and/or Open Space Programs, are not included.



This map displays the results of the Regional Conservation Priorities for the Lake Region Greenprint. The degree of priority for each area is shown with a color scale with dark red representing high priority and orange representing moderate priority. This map highlights the Greenprint results for the town of Raymond.

These priorities are the result of a weighted analysis on the following goals:

Protect Water Resources	20 %
Preserve Plant and Animal Habitat	18 %
Preserve Working Farms and Forests	15 %
Protect Scenic Views	14 %
Maintain Small Town Character of Village Centers	12 %
Protect and Enhance Existing Trails	11 %
Provide Recreation	10 %